

SILVER LINE SERIES



Submersible Pumps

C.R.I. Submersible Pumps are the products of the expertise gained from over five decades of experience, endurance and workmanship. These products are engineered to perfection with utmost care and stringent quality control at all stages to ensure a trouble free service.

Description : C.R.I. 3" & 4" Silverline series submersible pumps are built with thermoplastic impellers, diffusers and inbuilt check valve. All vital components of these pumps are made of corrosive resistance thermoplastic and the shaft is of SS 304/431. Pumps are multi stage centrifugal type. The optimal design of impellers and diffusers enables the best possible hydraulic efficiency.

The pump is firmly coupled to a submersible electric motor which operates submerged beneath the surface of water. Built in check valve prevents back flow and reduces the risk of water hammering. All mounting dimensions of 4" pumps & motors are in accordance with NEMA standard.

C.R.I. Submersible pumps can be offered with either C.R.I. 'W' Series, water filled rewindable submersible motors / C.R.I. 'R' Series, Resin Filled encapsulated (water lubricated) submersible motors / C.R.I. 'L' Series Non-toxic liquid filled submersible motors or any other NEMA standard motors.

Features : • Residential • Irrigation • Civil Water Supply • Fountains • Industrial and Rural Water Supply • Fire Fighting • Pressure Boosting Units • Gardens • Sprinkler Systems

Applications : • Best operating efficiency • Floating Impeller design for durability • Highly durable • Can be easily dismantled and repaired • Wear ring in diffuser for long life.

SILVER LINE SERIES

Pumped Liquids

Clean, Thin, Non-aggressive, Non explosive, Clear, Cold, Fresh Water without abrasives, Solid particles or fibre having the following characteristics

a)	Temperature	33 °C (max.)
b)	Permissible amount of sand	3" - 25g/m ³ (max.), 4" - 50g/m ³
c)	Chlorine ion density	500 ppm (max.)
d)	Allowable solids	3000 ppm (max.)
e)	Specific gravity	1.004 (max.)
f)	Hardness (Drinking water)	300 (max.)
g)	Viscosity	1.75 x 10 ⁻⁶ m ² /sec (max.)
h)	Turbidity	50 ppm silica scale(max.)
i)	pH	6.5 to 8.5

Pump Operating Limitations			
Nominal Diameter		3"(80mm)	4"(100mm)
Power Range		0.25 - 1.1 kW	0.37 - 7.5 kW
Speed		2850 rpm	2900 rpm
Discharge Range	m ³ /h	0.6 - 3	0.75 - 24
	lps	0.16 - 0.83	0.20 - 6.66
Total Head Range	m	8 - 138	4.0 - 250
	ft	26 - 453	13.0 - 820
Outlet Size in Inches		1	1¼, 1½ & 2

Maximum Temperature of Pumped Liquid

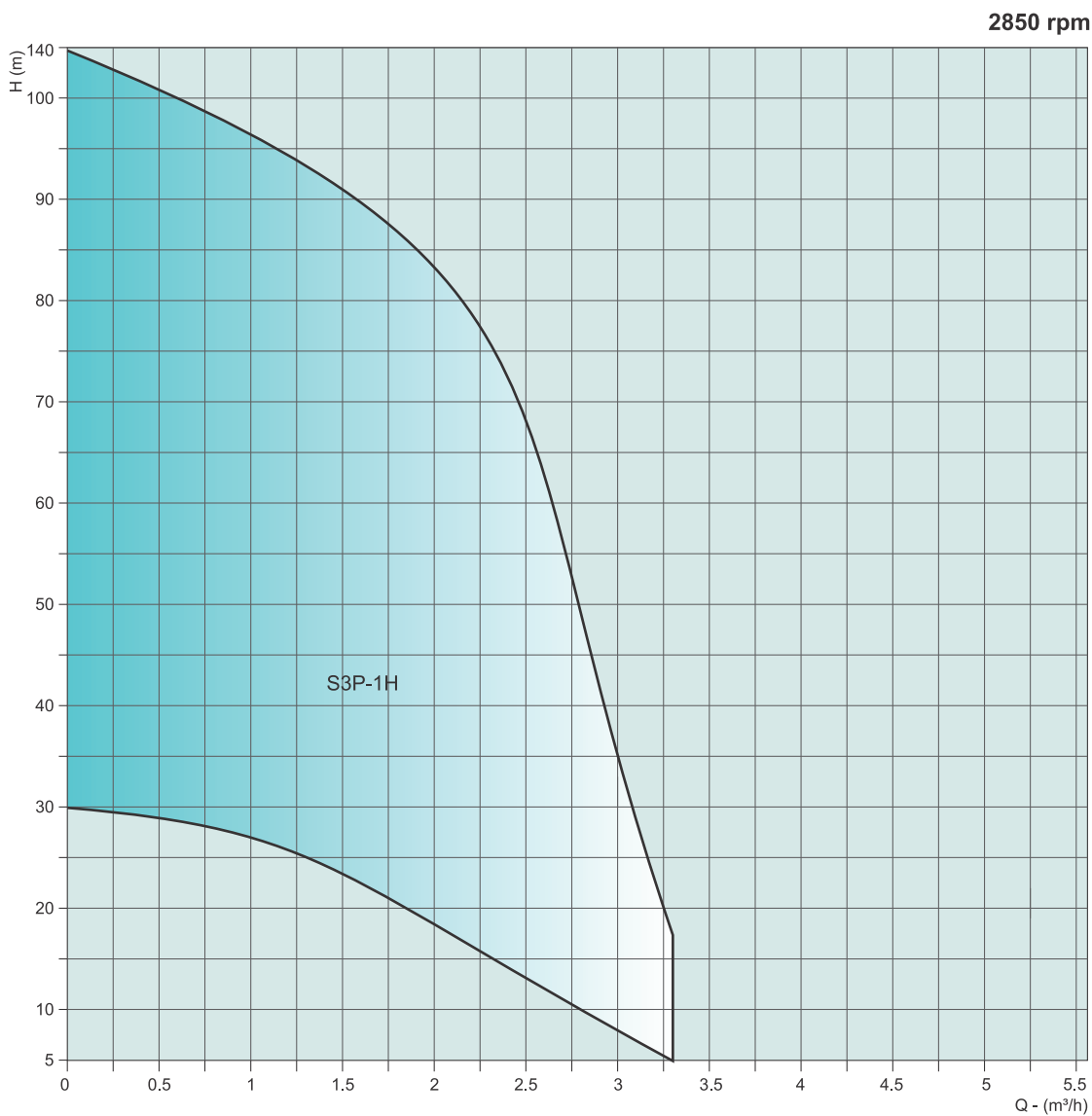
Motor	Minimum cooling flow along the motor	Vertical installation	Horizontal installation minimum 30°angle
3" & 4"	0.15 m/s	33 °C	33 °C

Maximum operating pressure	
3" Submersible pump	1.4 Mpa (14 bar)
4" Submersible pump	2.5 Mpa (25 bar)

In view of continuous developments, the informations / descriptions / specifications / illustrations are subject to change without notice. Refer general information for performance curve conditions and for other details. Curve tolerance according to ISO : 9906, Grade 3B

GENERAL INFORMATION

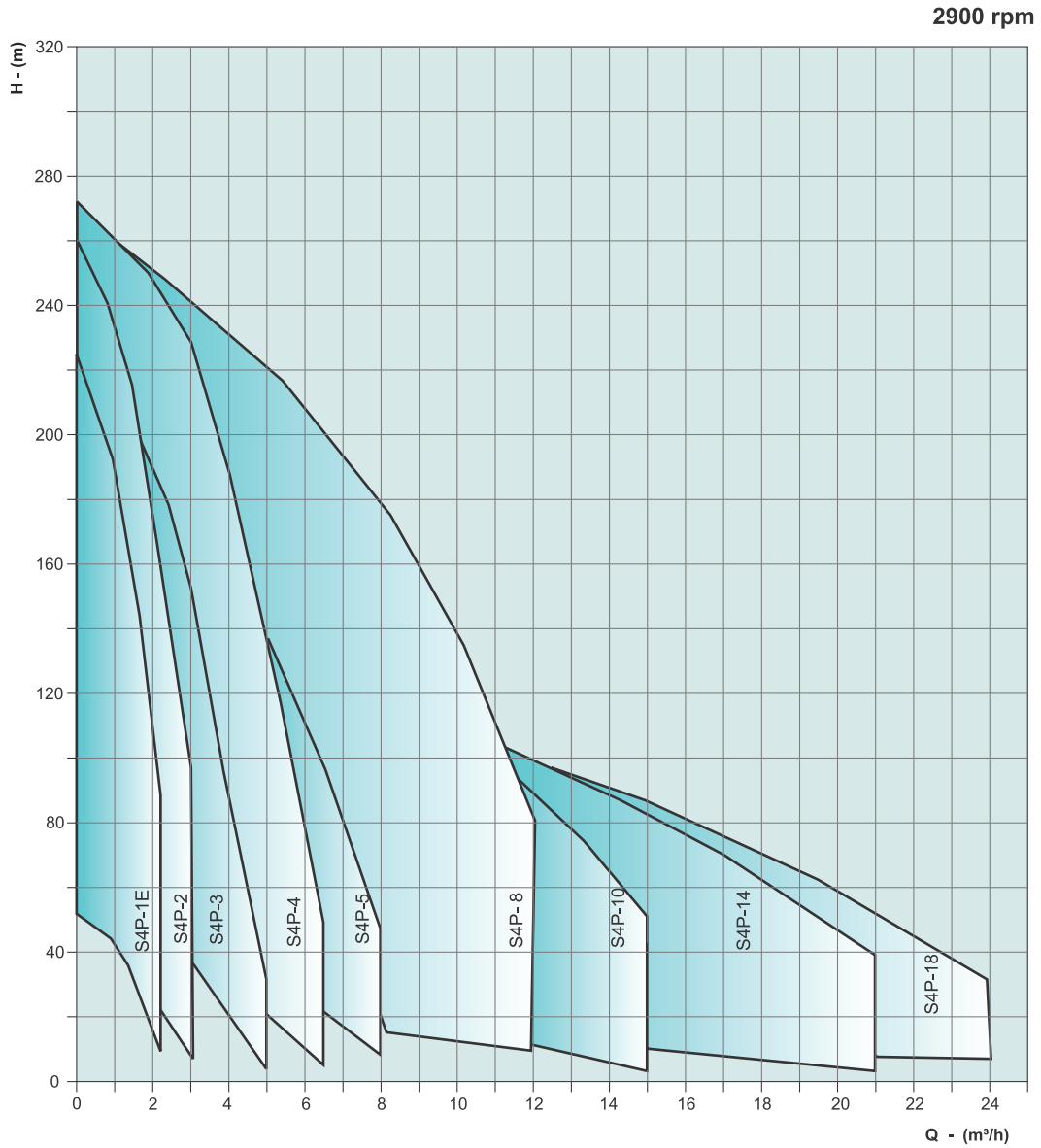
Group Performance Curves - 3"



In view of continuous developments, the informations / descriptions / specifications / illustrations are subject to change without notice. Refer general information for performance curve conditions and for other details. Curve tolerance according to ISO : 9906, Grade 3B

SILVER LINE SERIES

Group Performance Curves - 4" (Floating Impeller Model)



In view of continuous developments, the informations / descriptions / specifications / illustrations are subject to change without notice. Refer general information for performance curve conditions and for other details. Curve tolerance according to ISO : 9906, Grade 3B

GENERAL INFORMATION

Material of Construction

PART NAME	PART No.	NOMINAL DIA. 3"	NOMINAL DIA. 4"
		TYPE - P	TYPE - P
CHECK VALVE HOUSING	21.00	S.S - 304	S.S - 304
CHECK VALVE	21.07	THERMO PLASTIC (POM)	DELTRIN
CHECK VALVE SEAT	21.01	THERMO PLASTIC (POM)	NBR
OUTER SHELL	21.04	S.S - 304	S.S - 304
IMPELLER	19.00	THERMO PLASTIC (PPO)	NORYL*/ DELTRIN/ LEXAN**
DIFFUSER CHAMBER	18.03	THERMO PLASTIC (POM)	NORYL*/ LEXAN**
STOP RING	13.03	S.S - 304	HYLEM
INTERMEDIATE BEARING (SLEEVE / BUSH)	18.06	NBR	S.S. - 304 / NBR BRONZE
SUCTION INTER CONNECTOR	17.00	S.S - 304	S.S. - 304
INLET SCREEN	14.03	S.S - 304	S.S - 304
PUMP SHAFT HEXAGONAL	22.00	S.S - 431	S.S - 431
CABLE GUARD	17.04	S.S - 304	S.S - 304
*COUPLING SPLINES	—	S.S - 329	S.S - 329

*Friction welded with shaft

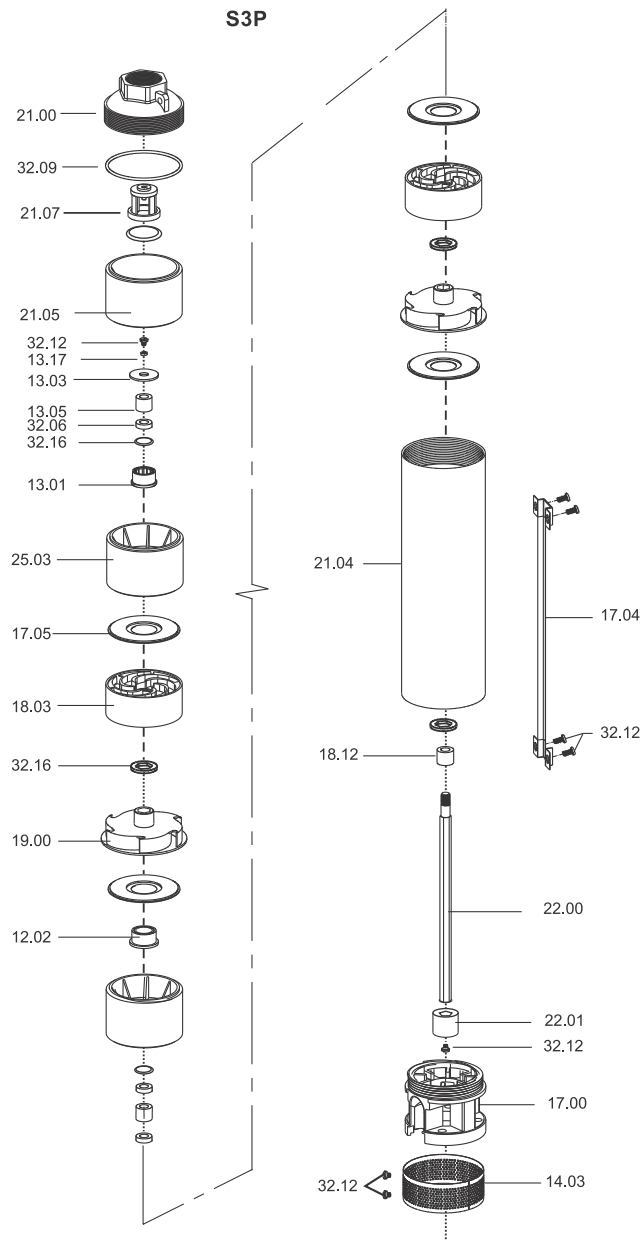
DELTRIN is Registered Trade Mark of Dupont.

*NORYL and **LEXAN are Registered Trade Mark of G.E Plastics.

In view of continuous developments, the informations / descriptions / specifications / illustrations are subject to change without notice. Refer general information for performance curve conditions and for other details. Curve tolerance according to ISO : 9906, Grade 3B

SILVER LINE SERIES

Exploded View



Part No.	Part Name
13.03	Uphrust Washer / Stop Ring
13.05	Sleeve
14.03	Inlet Screen
17.00	Suction Inter-Connector
17.04	Cable Guard
17.05	Diffuser Plate
18.03	Diffuser chamber
18.05	Bush - CT Pad

Part No.	Part Name
18.06	Bush-Diffuser Chamber
18.12	Spacer Sleeve
19.00	Impeller
21.00	check Valve Housing
21.04	Outer Shell
21.05	Check Valve Bracket
21.07	Check Valve
22.00	Pump Shaft

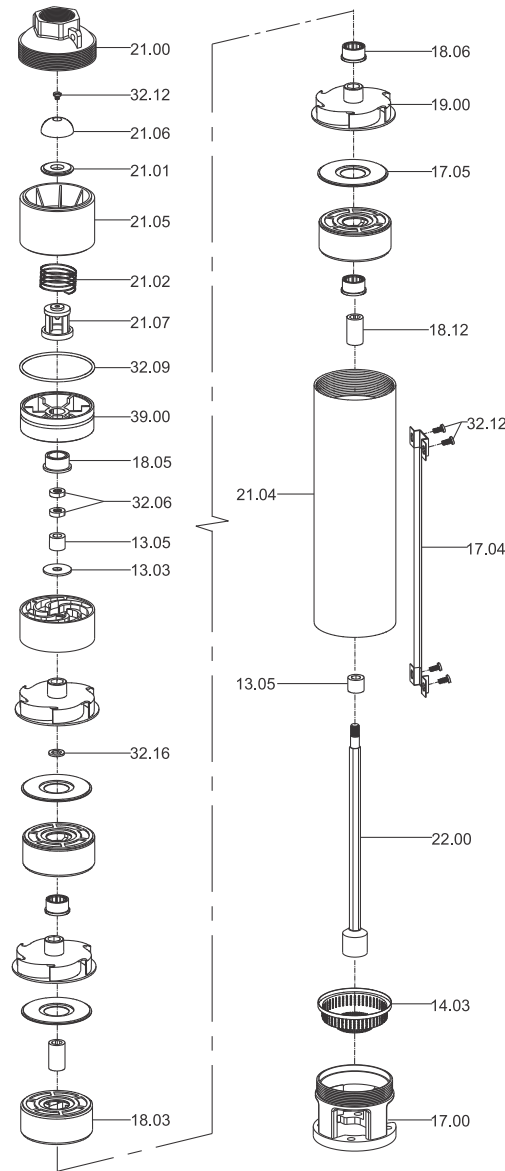
Part No.	Part Name
22.01	Coupling
39.00	Chamber-Bracket
32.06	Lock Nut
32.09	O-Ring
32.12	Screw
32.16	Washer
32.17	Metal Washer

In view of continuous developments, the informations / descriptions / specifications / illustrations are subject to change without notice. Refer general information for performance curve conditions and for other details. Curve tolerance according to ISO : 9906, Grade 3B

GENERAL INFORMATION

Exploded View

S4P (1-5m³/h)



Part No.	Part Name
13.03	Upthrust Washer / Stop Ring
13.05	Sleeve
14.03	Inlet Screen
17.00	Suction Inter-Connector
17.04	Cable Guard
17.05	Diffuser Plate
18.03	Diffuser Chamber
18.05	Bush - CT Pad

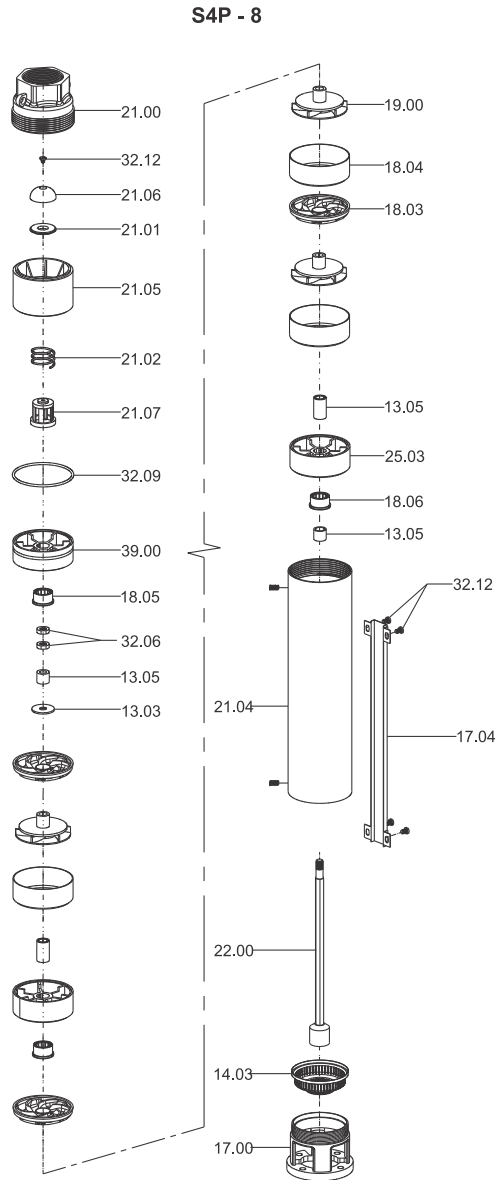
Part No.	Part Name
18.06	Bush-Diffuser Chamber
18.12	Spacer Sleeve
19.00	Impeller
21.00	Check Valve Housing
21.01	Check Valve Seat
21.02	Check Valve Spring
21.04	Outer Shell
21.05	Check Valve Bracket

Part No.	Part Name
21.06	Check Valve Disc
21.07	Check valve
22.00	Pump Shaft with Coupling
32.06	Lock Nut
32.09	O-Ring
32.12	Screw
32.16	Washer
39.00	Chamber-Bracket

In view of continuous developments, the informations / descriptions / specifications / illustrations are subject to change without notice. Refer general information for performance curve conditions and for other details. Curve tolerance according to ISO : 9906, Grade 3B

SILVER LINE SERIES

Exploded View



Part No.	Part Name
13.03	upthrust Washer / Stop Ring
13.05	Spacer Sleeve
14.03	Inlet Screen
17.00	Suction Inter-connector
17.04	Cable Guard
18.03	Diffuser
18.04	Chamber
18.05	Bush - CT Pad

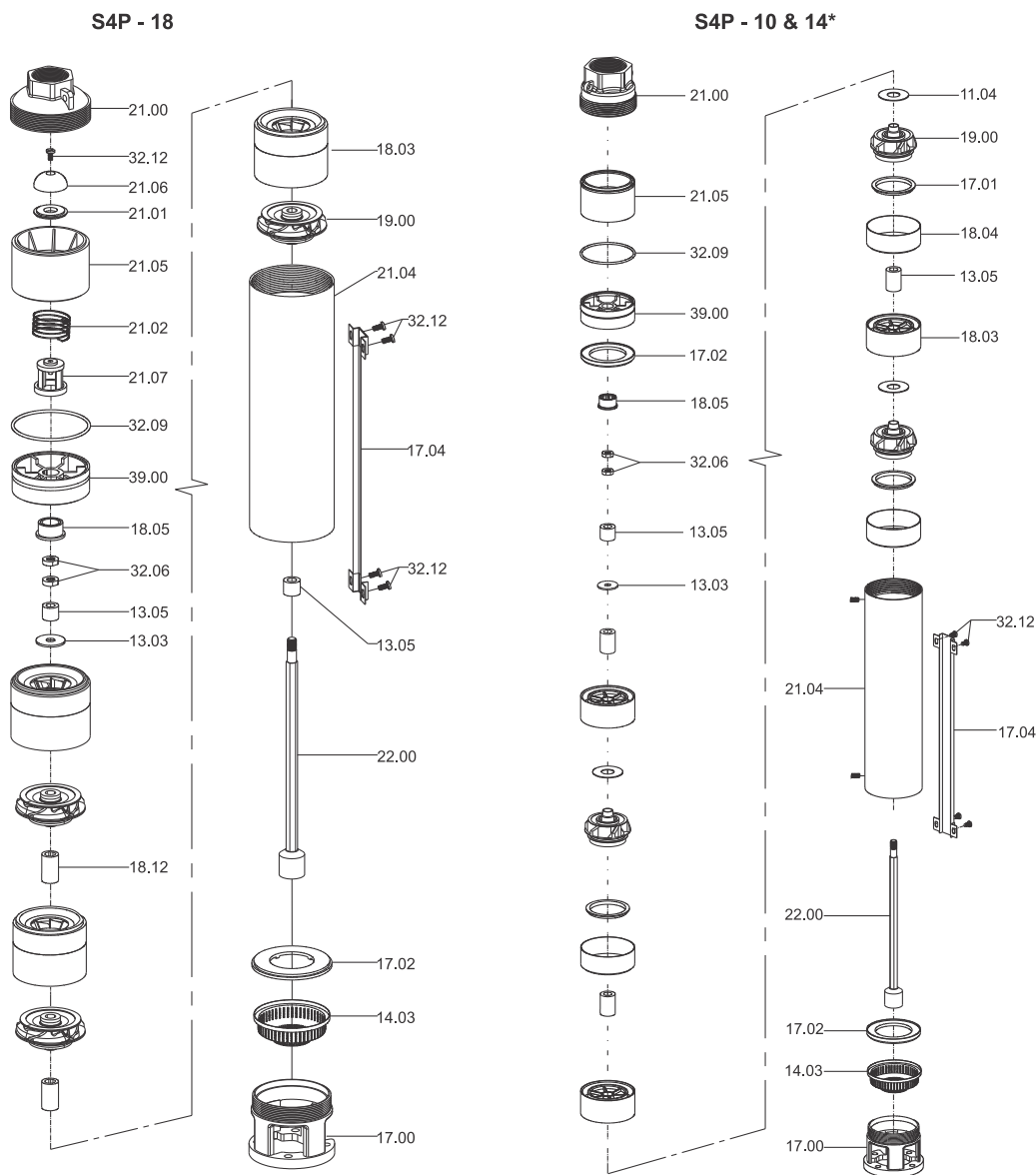
Part No.	Part Name
18.06	Bush-Diffuser Chamber
19.00	Impeller
21.00	Check Valve Housing
21.01	Check Valve Seat
21.02	Check Valve Spring
21.04	Outer Shell
21.05	Check Valve Bracket
21.06	Check Valve Disc

Part No.	Part Name
21.07	Check Valve
22.00	Pump Shaft with Coupling
39.00	Chamber-Bracket
32.06	Lock Nut
32.09	O-Ring
32.12	Screw
32.16	Washer

In view of continuous developments, the informations / descriptions / specifications / illustrations are subject to change without notice. Refer general information for performance curve conditions and for other details. Curve tolerance according to ISO : 9906, Grade 3B

GENERAL INFORMATION

Exploded View



Part No.	Part Name
11.04	Thrust Pad
13.01	Bush - CT Pad
13.03	Upthrust Washer / Stop Ring
13.05	Sleeve
14.03	Inlet Screen
17.00	Suction Inter-Connector
17.01	Wear ring / Seal
17.02	Suction Inter-Connector plate
17.04	Cable Guard

Part No.	Part Name
18.03	Diffuser Chamber
18.04	Chamber
18.05	Bush-Diffuser Chamber
18.12	Spacer Sleeve
19.00	Impeller
21.00	Check Valve Housing
21.01	Check Valve Seat
21.02	Check Valve Spring
21.04	Outer Shell

Part No.	Part Name
21.05	Check Valve Bracket
21.06	Check Valve Disc
21.07	Check Valve
22.00	Pump Shaft with Coupling
39.00	Chamber Bracket
32.06	Lock Nut
32.09	O-Ring
32.12	Screw
32.16	Washer

* For 14m³/h pumps internal NRV is not provided.

SILVERLINE SERIES

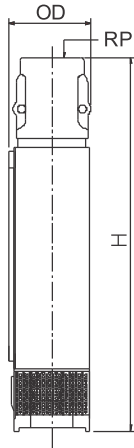
Nominal Diameter : **3"**

Nominal Flow : **1.8m³/h**

Outlet Size : **1"**

Performance Table

DIMENSIONS & WEIGHT



PUMP MODEL	REQUIRED MOTOR POWER		DIMENSIONS (mm)			APPROX NETT. WEIGHT (kg)
	kW	HP	OD	RP	H	
S3P-1H/10	0.25	0.33	75	25	454	3
S3P-1H/15	0.37	0.5	75	25	601	4
S3P-1H/22	0.55	0.75	75	25	777	4
S3P-1H/30	0.75	1	75	25	998	6
S3P-1H/43	1.1	1.5	75	25	1388	7

PUMP MODEL	MOTOR POWER		TOTAL MANOMETRIC HEAD IN METRES - (COLUMN WATER)	0	0.17	0.33	0.5	0.58	0.67	0.75	0.83
	kW	HP		0	0.6	1.2	1.8	2.1	2.4	2.7	3
S3P-1H/10	0.25	0.33		32	30	27	23	20	16	12	6
S3P-1H/15	0.37	0.5		48	45	41	25	30	25	18	9
S3P-1H/22	0.55	0.75		70	66	60	51	45	36	26	13
S3P-1H/30	0.75	1.0		95	90	82	70	61	49	35	18
S3P-1H/43	1.1	1.5		137	129	118	100	87	71	51	26

In view of continuous developments, the informations / descriptions / specifications / illustrations are subject to change without notice. Refer general information for performance curve conditions and for other details. Curve tolerance according to ISO : 9906, Grade 3B

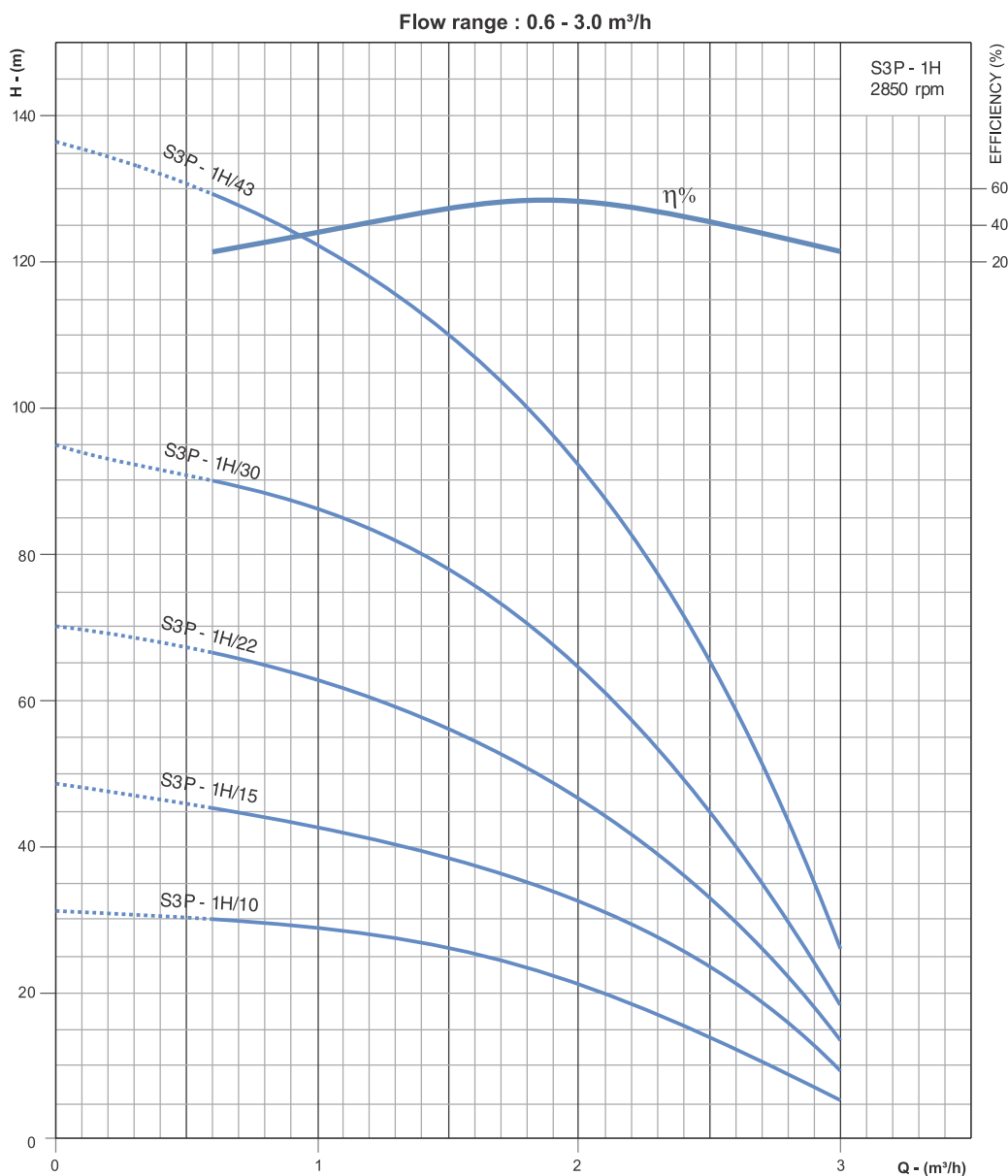
SILVER LINE SERIES

Nominal Diameter : **3"**

Nominal Flow : **1.8m³/h**

Outlet Size : **1"**

Performance Curves



In view of continuous developments, the informations / descriptions / specifications / illustrations are subject to change without notice. Refer general information for performance curve conditions and for other details. Curve tolerance according to ISO : 9906, Grade 3B

SILVERLINE SERIES

FLOATING IMPELLER MODEL

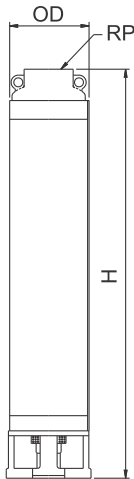
Nominal Diameter : **4**

Nominal Flow : **1.5m³/h**

Outlet Size : **1¼"**

Performance Table

DIMENSIONS & WEIGHT



PUMP MODEL	REQUIRED MOTOR POWER		DIMENSIONS (mm)			APPROX NETT. WEIGHT (kg)
	kW	HP	OD	RP	H	
S4P-1E/08	0.37	0.5	98	32	414	3
S4P-1E/13	0.55	0.75	98	32	524	4
S4P-1E/17	0.75	1	98	32	654	5
S4P-1E/18	0.75	1	98	32	679	5
S4P-1E/25	1.1	1.5	98	32	860	9
S4P-1E/26	1.1	1.5	98	32	882	9
S4P-1E/33	1.5	2	98	32	1036	12
S4P-1E/34	1.5	2	98	32	1058	12

PUMP MODEL	MOTOR kW	lps	0	0.20	0.27	0.34	0.41	0.48	0.55
		m ³ /h	0	0.75	1.0	1.25	1.50	1.75	2.0
S4P-1E/08	0.37	TOTAL MANOMETRIC HEAD IN METRES - (COLUMN WATER)	54	46	42	38	32	24	15
S4P-1E/13	0.55		89	78	75	70	61	50	38
S4P-1E/17	0.75		116	101	94	84	73	59	43
S4P-1E/18	0.75		122	111	102	93	81	67	49
S4P-1E/25	1.1		166	148	135	118	101	81	59
S4P-1E/26	1.1		177	156	143	127	109	89	68
S4P-1E/33	1.5		220	199	179	160	136	112	88
S4P-1E/34	1.5		226	202	188	172	149	124	98

In view of continuous developments, the informations / descriptions / specifications / illustrations are subject to change without notice. Refer general information for performance curve conditions and for other details. Curve tolerance according to ISO : 9906, Grade 3B

SILVER LINE SERIES

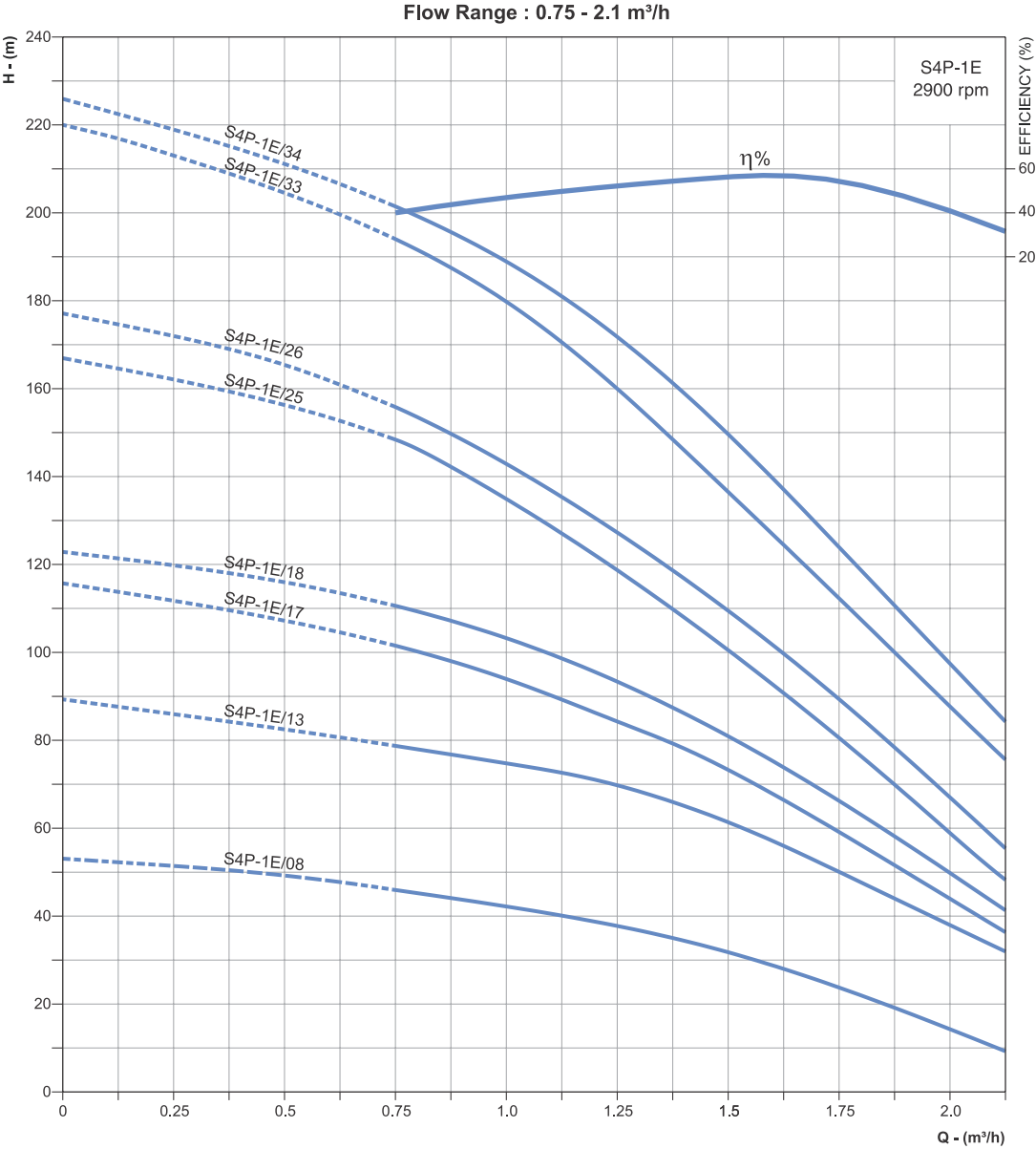
FLOATING IMPELLER MODEL

Nominal Diameter : **4"**

Nominal Flow : **1.5m³/h**

Outlet Size : **1 1/4"**

Performance Curves



In view of continuous developments, the informations / descriptions / specifications / illustrations are subject to change without notice. Refer general information for performance curve conditions and for other details. Curve tolerance according to ISO : 9906, Grade 3B

SILVERLINE SERIES

FLOATING IMPELLER MODEL

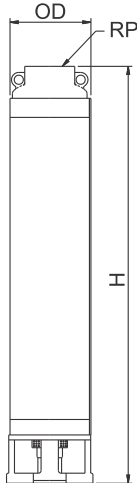
Nominal Diameter : **4"**

Nominal Flow : **2m³/h**

Outlet Size : **1 1/4"**

Performance Table

DIMENSIONS & WEIGHT



PUMP MODEL	REQUIRED MOTOR POWER		DIMENSIONS (mm)			APPROX NETT. WEIGHT (kg)
	kW	HP	OD	RP	H	
S4P-2/05	0.37	0.5	98	32	354	3
S4P-2/07	0.55	0.75	98	32	400	3
S4P-2/11	0.75	1	98	32	493	4
S4P-2/16	1.1	1.5	98	32	651	7
S4P-2/22	1.5	2	98	32	790	8
S4P-2/30	2.2	3	98	32	1006	11

PUMP MODEL	MOTOR kW	TOTAL MANOMETRIC HEAD IN METRES - (COLUMN WATER)	lps	0	0.27	0.41	0.55	0.69	0.83
			m ³ /h	0	1.0	1.5	2.0	2.5	3.0
S4P-2/05	0.37			44	40	38	31	25	13
S4P-2/07	0.55		62	59	52	45	34	22	
S4P-2/11	0.75		98	90	82	70	53	35	
S4P-2/16	1.1		143	131	119	100	78	48	
S4P-2/22	1.5		194	172	153	129	100	65	
S4P-2/30	2.2		260	232	209	172	135	92	

In view of continuous developments, the informations / descriptions / specifications / illustrations are subject to change without notice. Refer general information for performance curve conditions and for other details. Curve tolerance according to ISO : 9906, Grade 3B

SILVER LINE SERIES

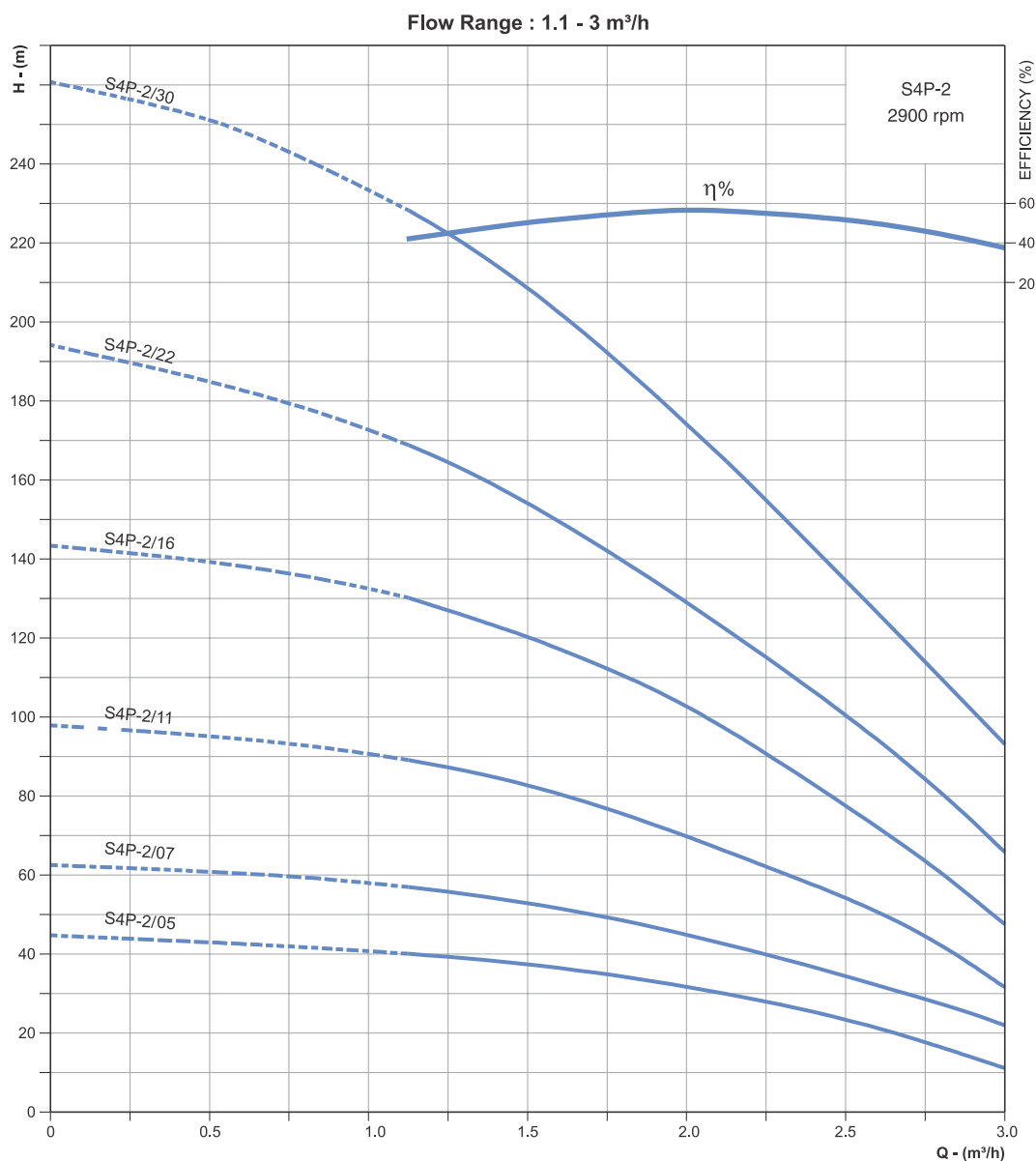
FLOATING IMPELLER MODEL

Nominal Diameter : **4"**

Nominal Flow : **2m³/h**

Outlet Size : **1 1/4"**

Performance Curves



In view of continuous developments, the informations / descriptions / specifications / illustrations are subject to change without notice. Refer general information for performance curve conditions and for other details. Curve tolerance according to ISO : 9906, Grade 3B

SILVERLINE SERIES

FLOATING IMPELLER MODEL

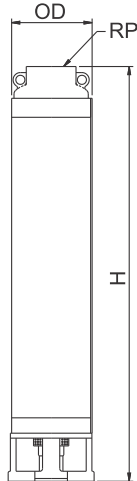
Nominal Diameter : **4"**

Nominal Flow : **3m³/h**

Outlet Size : **1 1/4"**

Performance Table

DIMENSIONS & WEIGHT



PUMP MODEL	REQUIRED MOTOR POWER		DIMENSIONS (mm)			APPROX NETT. WEIGHT (kg)
	kW	HP	OD	RP	H	
S4P-3/07	0.55	0.75	98	32	426	3
S4P-3/08	0.55	0.75	98	32	453	3
S4P-3/11	0.75	1	98	32	533	4
S4P-3/15	1.1	1.5	98	32	671	5
S4P-3/20	1.5	2	98	32	818	8
S4P-3/21	1.5	2	98	32	844	8
S4P-3/28	2.2	3	98	32	1063	11
S4P-3/30	2.2	3	98	32	1117	12

PUMP MODEL	MOTOR kW	lps	0	0.55	0.69	0.83	0.97	1.11	1.25
		m ³ /h	0	2.0	2.5	3.0	3.5	4.0	4.5
S4P-3/07	0.55	TOTAL MANOMETRIC HEAD IN METRES - (COLUMN WATER)	52	42	38	33	26	18	10
S4P-3/08	0.55		59	52	45	39	31	22	13
S4P-3/11	0.75		80	70	62	54	45	34	22
S4P-3/15	1.1		111	98	88	77	63	48	30
S4P-3/20	1.5		150	128	116	101	82	61	38
S4P-3/21	1.5		157	133	121	107	86	63	40
S4P-3/28	2.2		208	177	161	141	115	88	55
S4P-3/30	2.2		221	190	172	151	125	96	62

In view of continuous developments, the informations / descriptions / specifications / illustrations are subject to change without notice. Refer general information for performance curve conditions and for other details. Curve tolerance according to ISO : 9906, Grade 3B

SILVER LINE SERIES

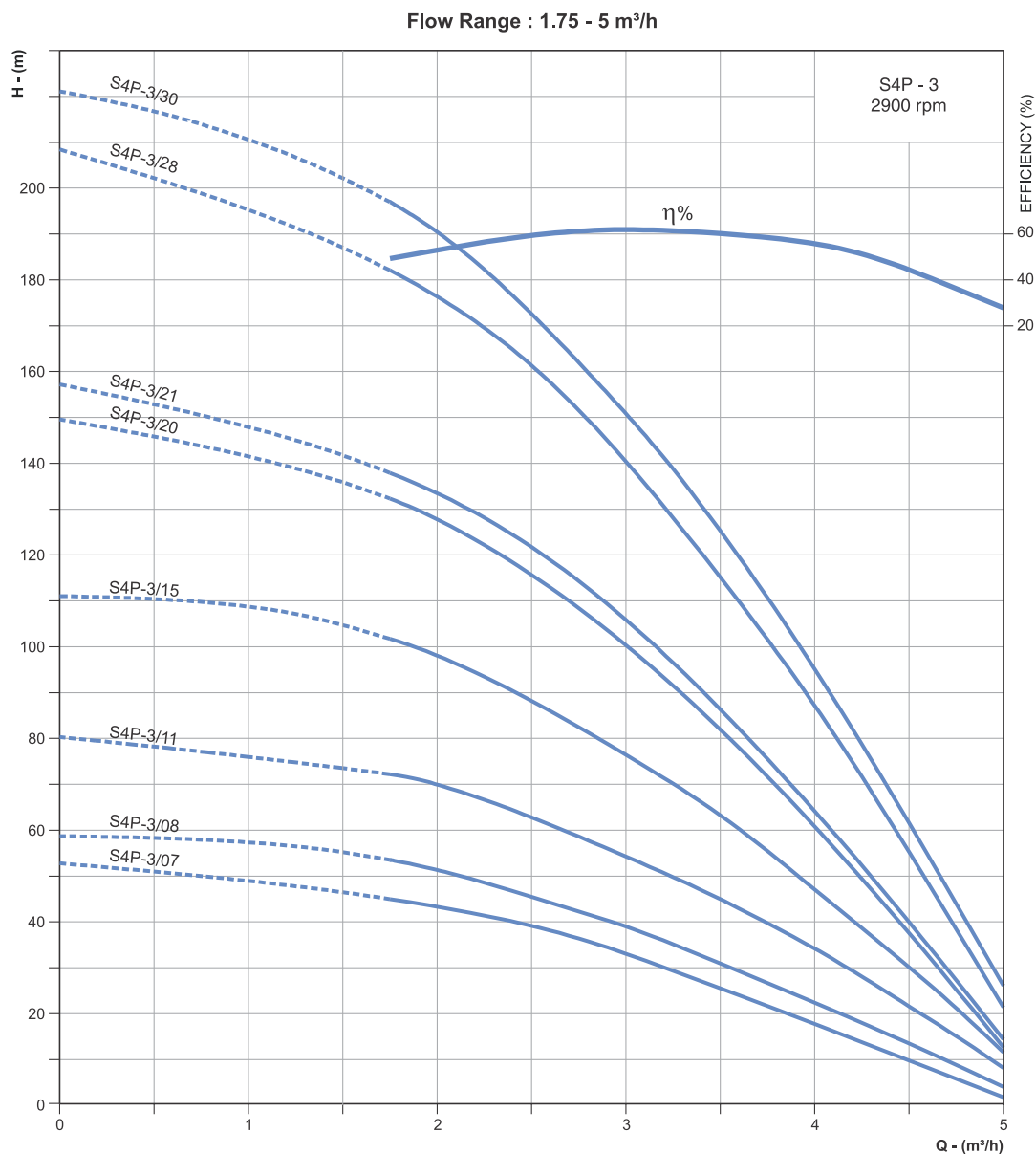
FLOATING IMPELLER MODEL

Nominal Diameter : **4"**

Nominal Flow : **3m³/h**

Outlet Size : **1 1/4"**

Performance Curves



In view of continuous developments, the informations / descriptions / specifications / illustrations are subject to change without notice. Refer general information for performance curve conditions and for other details. Curve tolerance according to ISO : 9906, Grade 3B

SILVERLINE SERIES

FLOATING IMPELLER MODEL

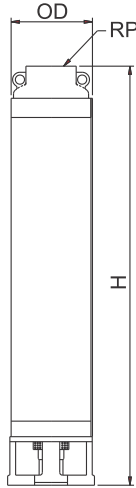
Nominal Diameter : **4"**

Nominal Flow : **4m³/h**

Outlet Size : **1 1/4"**

Performance Table

DIMENSIONS & WEIGHT



PUMP MODEL	REQUIRED MOTOR POWER		DIMENSIONS (mm)			APPROX NETT. WEIGHT (kg)
	kW	HP	OD	RP	H	
S4P-4/05	0.55	0.75	98	32	383	2
S4P-4/06	0.55	0.75	98	32	412	2
S4P-4/07	0.75	1	98	32	441	3
S4P-4/10	1.1	1.5	98	32	528	4
S4P-4/11	1.1	1.5	98	32	557	4
S4P-4/14	1.5	2	98	32	674	6
S4P-4/15	1.5	2	98	32	703	6
S4P-4/20	2.2	3	98	32	860	8
S4P-4/22	2.2	3	98	32	918	9
S4P-4/27	3	4	98	32	1093	11
S4P-4/35	3.7	5	98	32	1325	14

PUMP MODEL	MOTOR kW	TOTAL MANOMETRIC HEAD IN METRES - (COLUMN WATER)	lps	0	0.55	0.83	1.11	1.39	1.66	1.80
			m ³ /h	0	2	3	4	5	6	6.5
S4P-4/05	0.55			38	32	28	22	15	8	4
S4P-4/06	0.55		46	40	37	31	21	12	8	
S4P-4/07	0.75		54	49	44	37	25	14	9	
S4P-4/10	1.1		79	69	62	51	39	22	16	
S4P-4/11	1.1		86	77	72	61	47	29	20	
S4P-4/14	1.5		110	99	89	73	55	35	26	
S4P-4/15	1.5		118	108	96	79	60	38	28	
S4P-4/20	2.2		158	141	128	110	82	49	34	
S4P-4/22	2.2		185	165	148	128	98	58	40	
S4P-4/27	3		210	198	183	159	120	71	44	
S4P-4/35	3.7		270	248	228	192	140	81	49	

In view of continuous developments, the informations / descriptions / specifications / illustrations are subject to change without notice. Refer general information for performance curve conditions and for other details. Curve tolerance according to ISO : 9906, Grade 3B

SILVER LINE SERIES

FLOATING IMPELLER MODEL

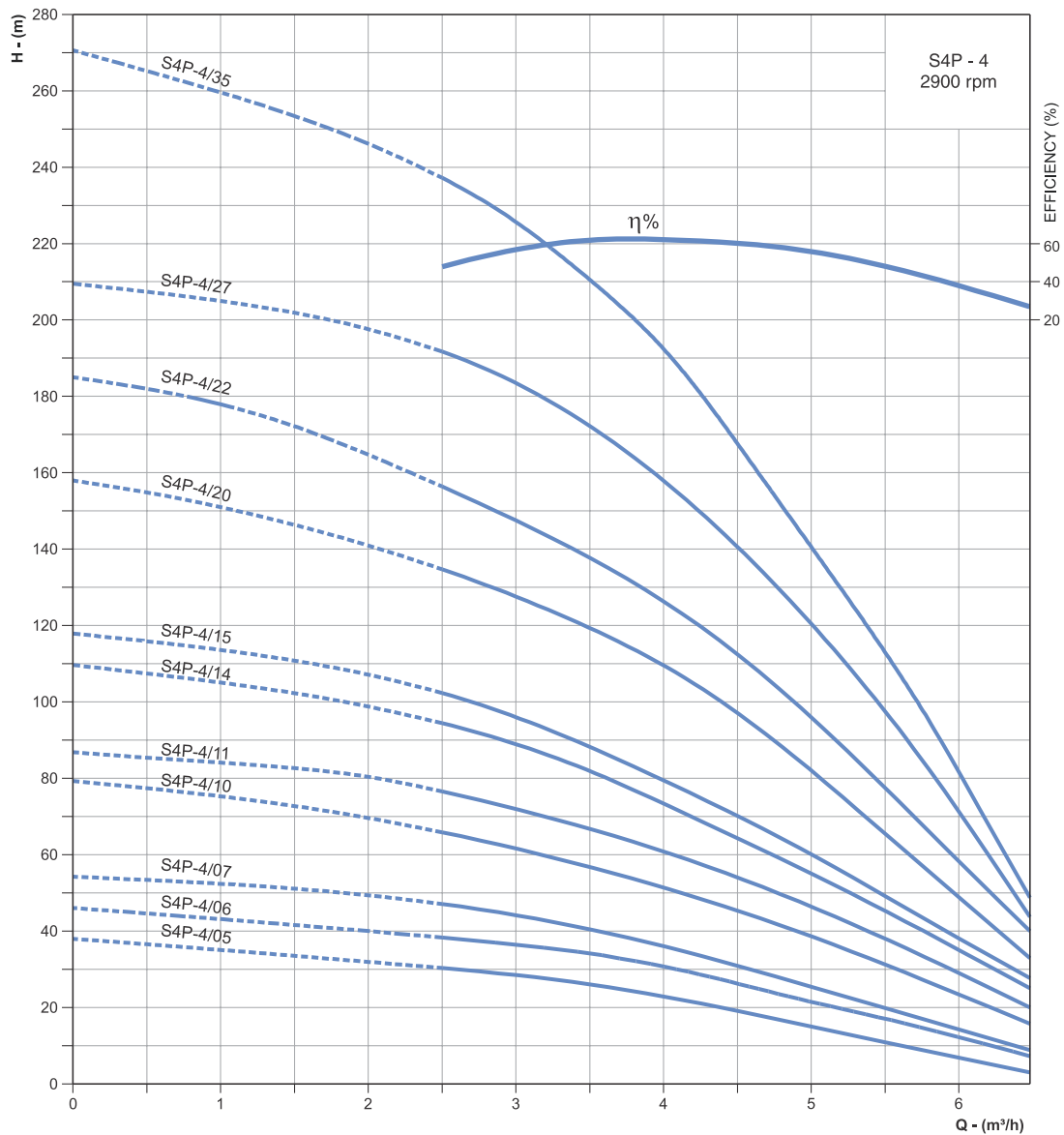
Nominal Diameter : **4"**

Nominal Flow : **4m³/h**

Outlet Size : **1 1/4"**

Performance Curves

Flow Range : 2.5 - 6.5 m³/h



In view of continuous developments, the informations / descriptions / specifications / illustrations are subject to change without notice. Refer general information for performance curve conditions and for other details. Curve tolerance according to ISO : 9906, Grade 3B

SILVERLINE SERIES

FLOATING IMPELLER MODEL

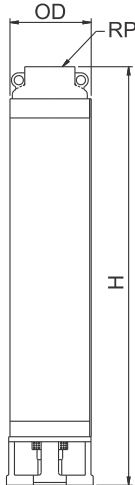
Nominal Diameter : **4"**

Nominal Flow : **5m³/h**

Outlet Size : **1½"**

Performance Table

DIMENSIONS & WEIGHT



PUMP MODEL	REQUIRED MOTOR POWER		DIMENSIONS (mm)			APPROX NETT. WEIGHT (kg)
	kW	HP	OD	RP	H	
S4P-5/06	0.75	1	98	40	459	3
S4P-5/08	1.1	1.5	98	40	533	3
S4P-5/09	1.1	1.5	98	40	570	4
S4P-5/11	1.5	2	98	40	643	4
S4P-5/12	1.5	2	98	40	680	9
S4P-5/17	2.2	3	98	40	907	7
S4P-5/21	3.0	4	98	40	1054	8
S4P-5/27	3.7	5	98	40	1306	11

PUMP MODEL	MOTOR kW	TOTAL MANOMETRIC HEAD IN METRES - (COLUMN WATER)	lps	0	0.83	1.11	1.39	1.66	1.94	2.22
			m ³ /h	0	3	4	5	6	7	8
S4P-5/06	0.75			42	39	37	32	27	18	9
S4P-5/08	1.1			58	53	49	42	34	25	15
S4P-5/09	1.1			65	59	55	50	41	31	17
S4P-5/11	1.5			79	72	67	58	48	35	20
S4P-5/12	1.5			86	78	73	65	55	42	25
S4P-5/17	2.2			123	115	105	91	76	57	31
S4P-5/21	3.0			145	135	126	111	92	70	39
S4P-5/27	3.7			184	163	158	138	116	80	42

In view of continuous developments, the informations / descriptions / specifications / illustrations are subject to change without notice. Refer general information for performance curve conditions and for other details. Curve tolerance according to ISO : 9906, Grade 3B

SILVER LINE SERIES

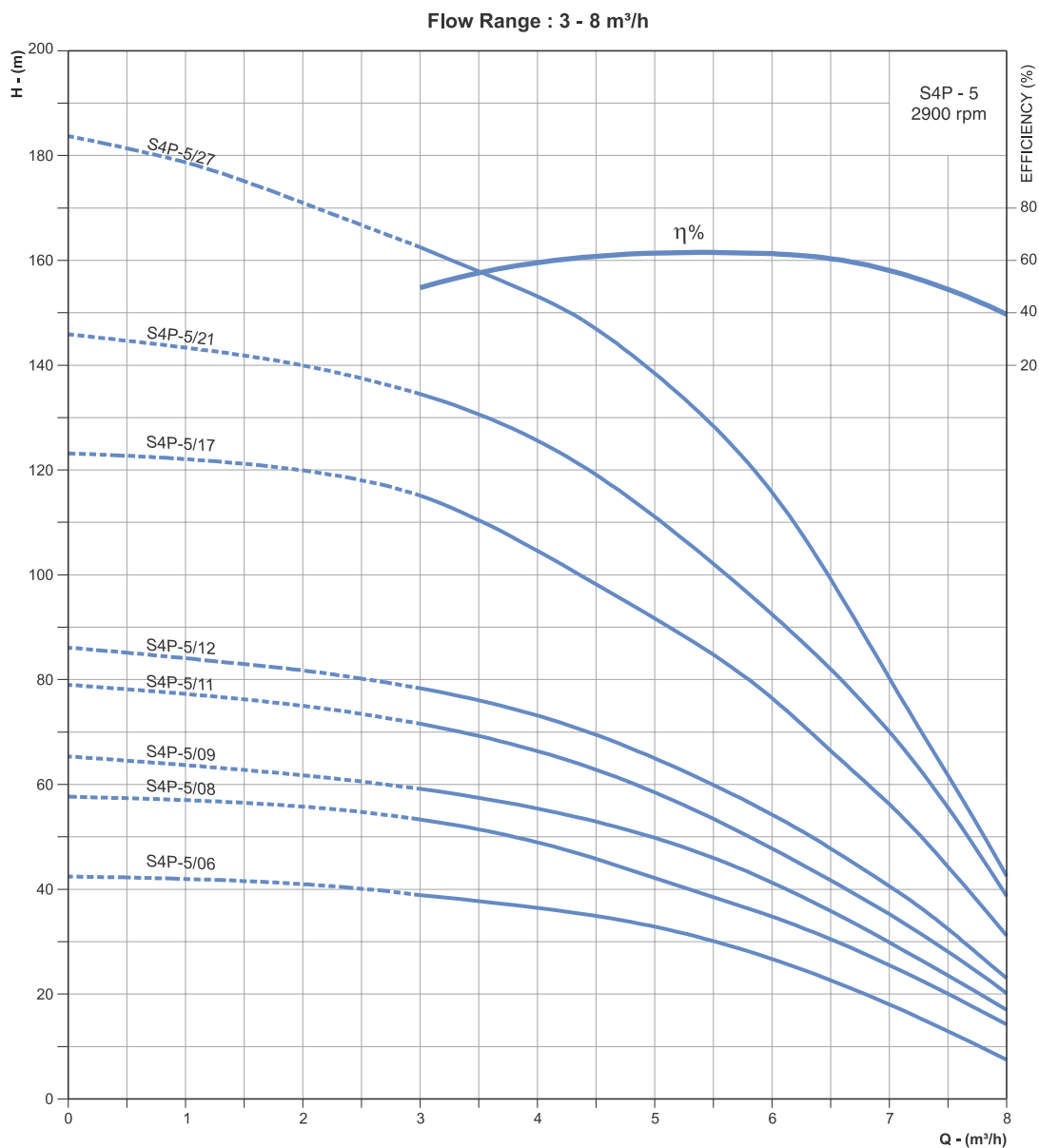
FLOATING IMPELLER MODEL

Nominal Diameter : **4"**

Nominal Flow : **5m³/h**

Outlet Size : **1½"**

Performance Curves



* These Models are available in Type - "V" construction as well.

In view of continuous developments, the informations / descriptions / specifications / illustrations are subject to change without notice. Refer general information for performance curve conditions and for other details. Curve tolerance according to ISO : 9906, Grade 3B

SILVERLINE SERIES

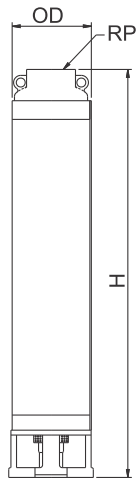
Nominal Diameter : **4"**

Nominal Flow : **8m³/h**

Outlet Size : **2"**

Performance Table

DIMENSIONS & WEIGHT



PUMP MODEL	REQUIRED MOTOR POWER		DIMENSIONS (mm)			APPROX NETT. WEIGHT (kg)
	kW	HP	OD	RP	H	
S4P-8/04	0.75	1.0	98	50	374	4
S4P-8/06	1.1	1.5	98	50	436	4
S4P-8/08	1.5	2.0	98	50	498	3
S4P-8/13	2.2	3.0	98	50	653	7
S4P-8/17	3.0	4.0	98	50	807	8
S4P-8/23	4.0	5.5	98	50	993	10
S4P-8/32	5.5	7.5	98	50	1302	13
S4P-8/43	7.5	10	98	50	1643	18

PUMP MODEL	MOTOR kW	lps	0	1.11	1.66	2.22	2.78	3.33
			m ³ /h	0	4	6	8	10
S4P-8/04	0.75	TOTAL MANOMETRIC HEAD IN METRES - (COLUMN WATER)	25	21	20	19	14	8
S4P-8/06	1.1		38	35	32	28	22	13
S4P-8/08	1.5		51	48	45	40	31	20
S4P-8/13	2.2		82	72	69	61	48	29
S4P-8/17	3.0		108	101	96	85	69	43
S4P-8/23	4.0		143	132	122	109	88	52
S4P-8/32	5.5		200	182	168	148	116	68
S4P-8/43	7.5		270	242	221	193	149	88

In view of continuous developments, the informations / descriptions / specifications / illustrations are subject to change without notice. Refer general information for performance curve conditions and for other details. Curve tolerance according to ISO : 9906, Grade 3B

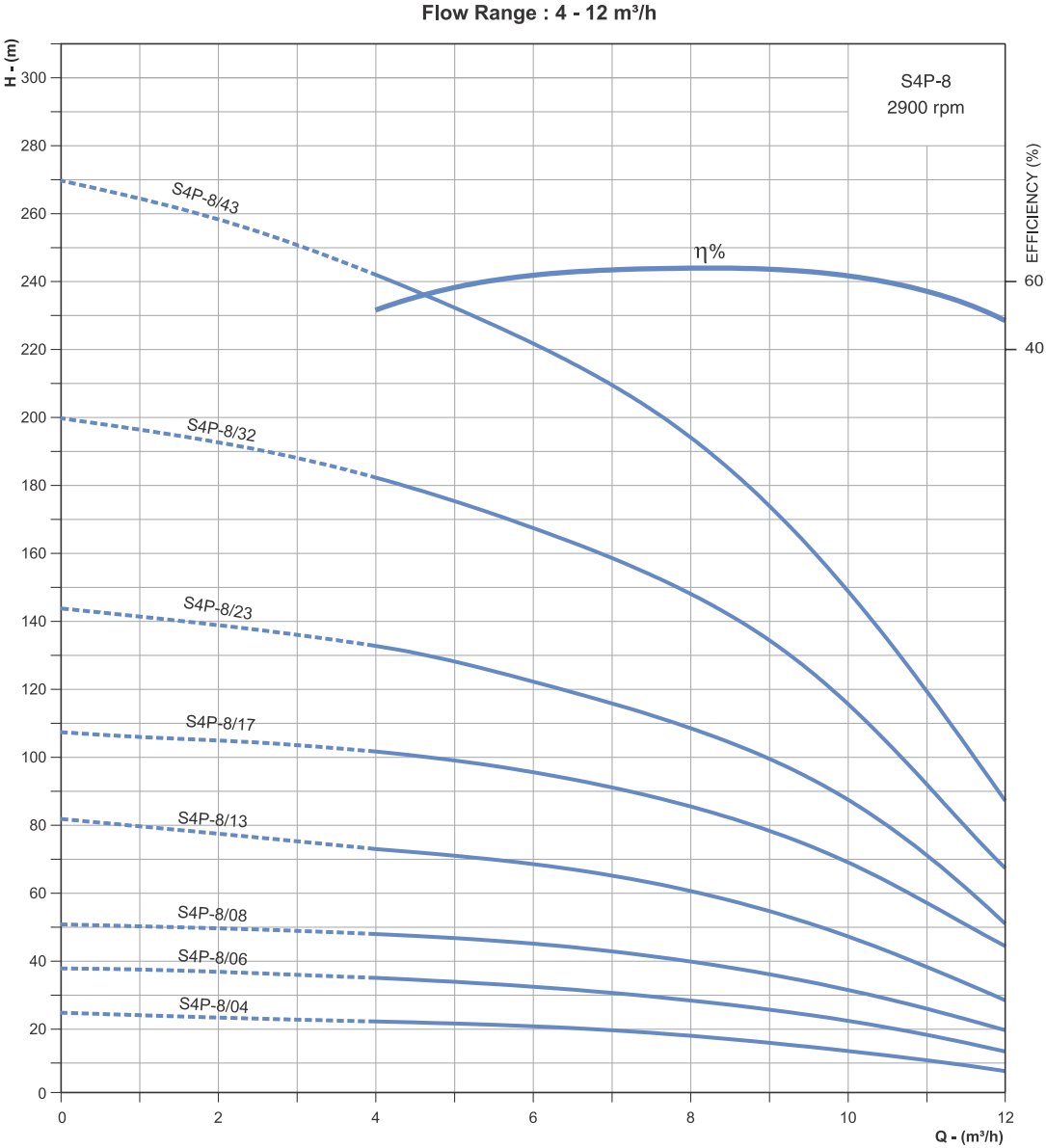
SILVER LINE SERIES

Nominal Diameter : **4"**

Nominal Flow : **8m³/h**

Outlet Size : **2"**

Performance Curves



In view of continuous developments, the informations / descriptions / specifications / illustrations are subject to change without notice. Refer general information for performance curve conditions and for other details. Curve tolerance according to ISO : 9906, Grade 3B

SILVERLINE SERIES

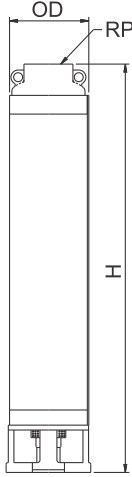
Nominal Diameter : **4"**

Nominal Flow : **10m³/h**

Outlet Size : **2"**

Performance Table

DIMENSIONS & WEIGHT



PUMP MODEL	REQUIRED MOTOR POWER		DIMENSIONS (mm)			APPROX NETT. WEIGHT (kg)
	kW	HP	OD	RP	H	
S4P-10/03	0.75	1	98	50	448	3
S4P-10/04	0.75	1	98	50	450	3
S4P-10/05	1.1	1.5	98	50	562	4
S4P-10/06	1.1	1.5	98	50	570	5
S4P-10/07	1.5	2	98	50	676	5
S4P-10/08	1.5	2	98	50	690	6
S4P-10/10	2.2	3	98	50	790	8
S4P-10/12	2.2	3	98	50	904	9
S4P-10/15	3	4	98	50	1075	11
S4P-10/17	3	4	98	50	1189	13
S4P-10/20	4	5.5	98	50	1360	15
S4P-10/22	4	5.5	98	50	1474	17
S4P-10/26	5.5	7.5	98	50	1702	20
S4P-10/28	5.5	7.5	98	50	1816	21

PUMP MODEL	MOTOR kW	lps m ³ /h	0	1.11	1.66	2.22	2.78	3.33	3.89
			0	4	6	8	10	12	14
S4P-10/03	0.75	TOTAL MANOMETRIC HEAD IN METRES - (COLUMN WATER)	17	16	15	14	12	9	5
S4P-10/04	0.75		22	21	20	18	16	13	7
S4P-10/05	1.1		27	26	25	23	20	16	9
S4P-10/06	1.1		34	33	31	28	24	19	12
S4P-10/07	1.5		39	37	35	33	28	22	14
S4P-10/08	1.5		46	43	42	38	33	27	12
S4P-10/10	2.2		57	54	52.5	48	42	33	22
S4P-10/12	2.2		66	64	62.5	57	50	39	25
S4P-10/15	3		83	78	75	69	61	48	33
S4P-10/17	3		94	88	84	78	69	55	39
S4P-10/20	4		107	102	98	92.5	82	65	45
S4P-10/22	4		122	116	111	102.5	90	72	50
S4P-10/26	5.5		140	136	130	122	107	85	59
S4P-10/28	5.5		153	144	137	127	112	91	65

In view of continuous developments, the informations / descriptions / specifications / illustrations are subject to change without notice. Refer general information for performance curve conditions and for other details. Curve tolerance according to ISO : 9906, Grade 3B

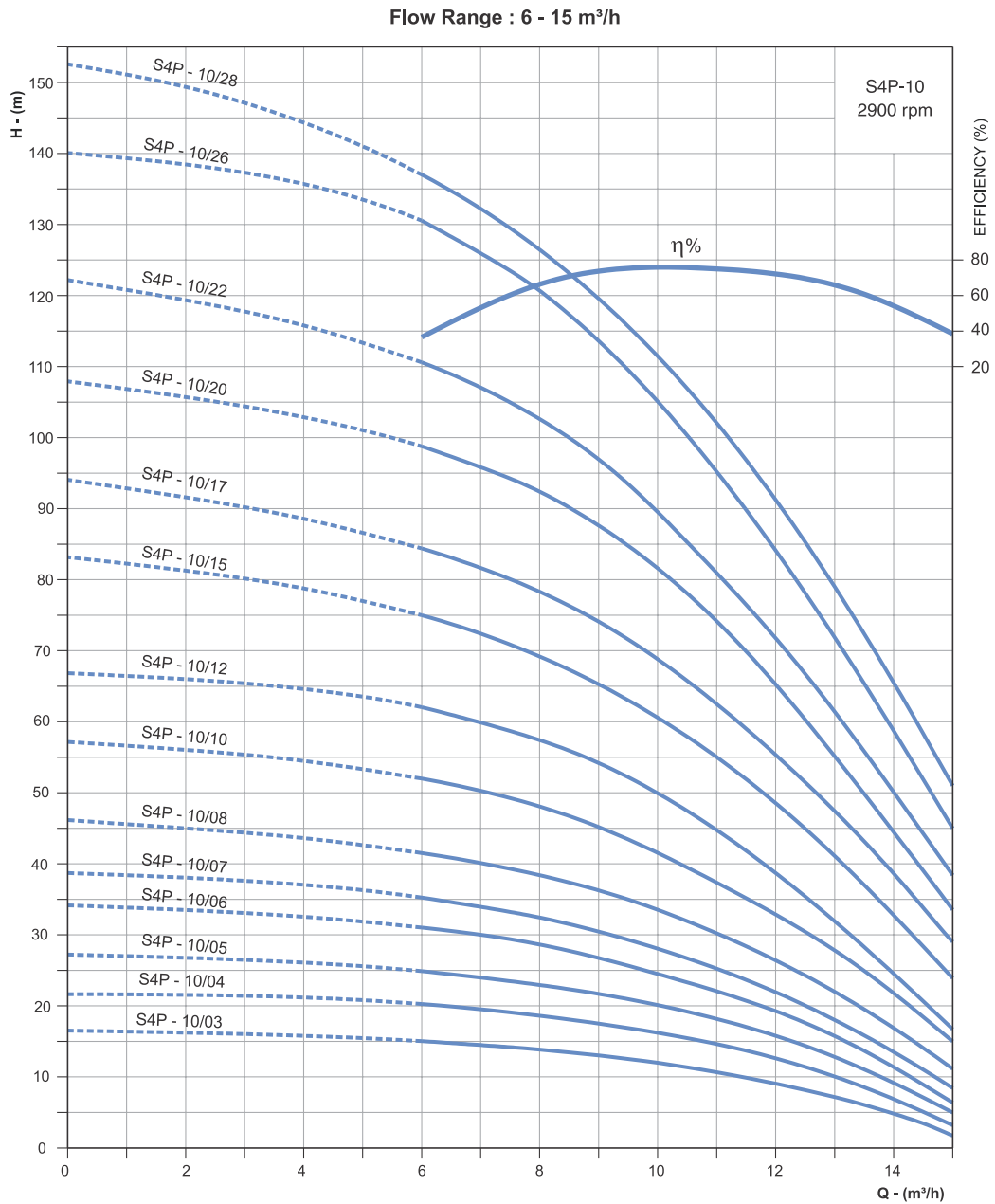
SILVER LINE SERIES

Nominal Diameter : **4"**

Nominal Flow : **10m³/h**

Outlet Size : **2"**

Performance Curves



In view of continuous developments, the informations / descriptions / specifications / illustrations are subject to change without notice. Refer general information for performance curve conditions and for other details. Curve tolerance according to ISO : 9906, Grade 3B

SILVERLINE SERIES

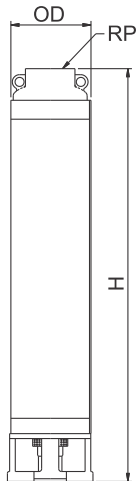
Nominal Diameter : **4"**

Nominal Flow : **14m³/h**

Outlet Size : **2"**

Performance Table

DIMENSIONS & WEIGHT



PUMP MODEL	REQUIRED MOTOR POWER		DIMENSIONS (mm)			APPROX NETT. WEIGHT (kg)
	kW	HP	OD	RP	H	
S4P-14/03	0.75	1	98	50	463	3
S4P-14/05	1.1	1.5	98	50	610	4
S4P-14/07	1.5	2	98	50	775	6
S4P-14/10	2.2	3	98	50	1009	9
S4P-14/11	2.2	3	98	50	1087	10
S4P-14/12	3.0	4	98	50	1165	10
S4P-14/13	3.0	4	98	50	1243	11
S4P-14/16	3.7	5	98	50	1477	14
S4P-14/17	3.7	5	98	50	1555	14
S4P-14/22	5.5	7.5	98	50	1945	29
S4P-14/24	5.5	7.5	98	50	2101	33

PUMP MODEL	MOTOR kW	lps	0	2.22	2.78	3.33	3.89	4.44	5.00	5.56
		m ³ /h	0	8	10	12	14	16	18	20
S4P-14/03	0.75	TOTAL MANOMETRIC HEAD IN METRES - (COLUMN WATER)	17	14	13	12	9	7	-	-
S4P-14/05	1.1		28	24	22	19	16	14	9	6
S4P-14/07	1.5		38	33	30	26	22	18	14	9
S4P-14/10	2.2		59	49	45	40	34	29	22	15
S4P-14/11	2.2		64	59	50	45	39	33	25	17
S4P-14/12	3		69	59	55	48	43	34	27	18
S4P-14/13	3		74	65	58	52	44	36	29	20
S4P-14/16	3.7		89	77	69	62	53	44	34	24
S4P-14/17	3.7		98	85	77	68	59	49	38	27
S4P-14/22	5.5		123	104	93	82	70	57	43	29
S4P-14/24	5.5		134	114	104	92	78	64	49	33

In view of continuous developments, the informations / descriptions / specifications / illustrations are subject to change without notice. Refer general information for performance curve conditions and for other details. Curve tolerance according to ISO : 9906, Grade 3B

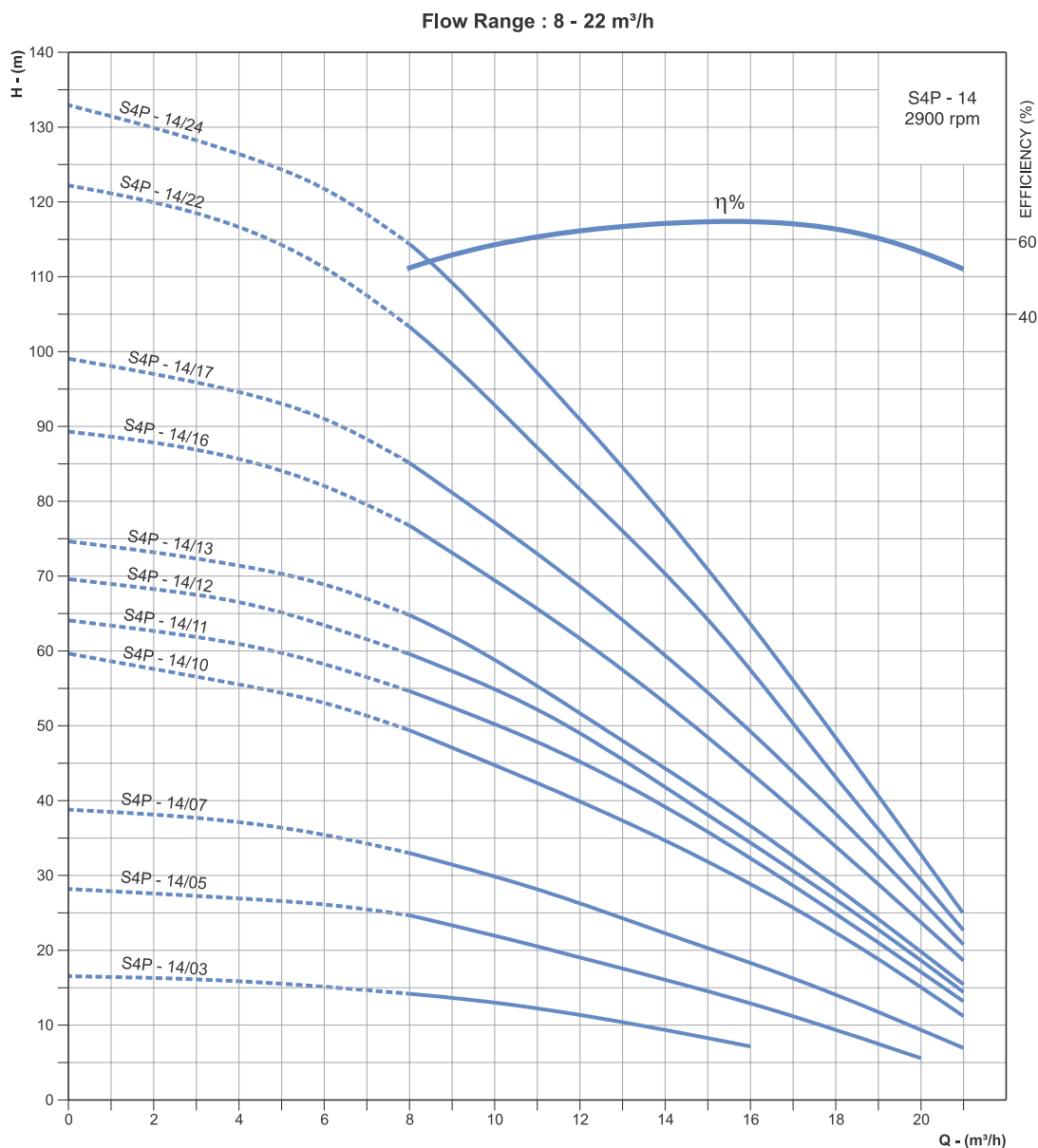
SILVER LINE SERIES

Nominal Diameter : **4"**

Nominal Flow : **14m³/h**

Outlet Size : **2"**

Performance Curves



In view of continuous developments, the informations / descriptions / specifications / illustrations are subject to change without notice. Refer general information for performance curve conditions and for other details. Curve tolerance according to ISO : 9906, Grade 3B

SILVERLINE SERIES

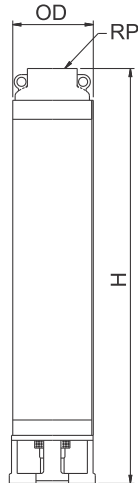
Nominal Diameter : **4"**

Nominal Flow : **18m³/h**

Outlet Size : **2"**

Performance Table

DIMENSIONS & WEIGHT



PUMP MODEL	REQUIRED MOTOR POWER		DIMENSIONS (mm)			APPROX NETT. WEIGHT (kg)
	kW	HP	OD	RP	H	
S4P-18/04	1.1	1.5	98	50	407	4
S4P-18/06	1.5	2.0	98	50	648	5
S4P-18/09	2.2	3.0	98	50	860	7
S4P-18/13	3.7	5.0	98	50	1142	10
S4P-18/14	4.0	5.5	98	50	1213	11
S4P-18/20	5.5	7.5	98	50	1637	16
S4P-18/22	5.5	7.5	98	50	1778	18
S4P-18/26	7.5	10.0	98	50	2060	19
S4P-18/28	7.5	10.0	98	50	2201	22

PUMP MODEL	MOTOR kW	lps	0	2.78	3.33	3.86	4.44	5	5.56	6.11
		m ³ /h	0	10	12	14	16	18	20	22
S4P-18/04	1.1	TOTAL MANOMETRIC HEAD IN METRES - (COLUMN WATER)	17	14	13	11	10	9	8	6
S4P-18/06	1.5		26	19	18	17	16	14	11	9
S4P-18/09	2.2		38	31	29	27	24	21	17	14
S4P-18/13	3.7		54	45	42	38	34	28	24	20
S4P-18/14	4.0		58	48	44	41	37	33	27	23
S4P-18/20	5.5		81	68	63	57	52	46	38	30
S4P-18/22	5.5		89	74	71	61	55	48	41	32
S4P-18/26	7.5		106	90	84	76	67	57	47	38
S4P-18/28	7.5		116	97	89	82	73	64	54	43

In view of continuous developments, the informations / descriptions / specifications / illustrations are subject to change without notice. Refer general information for performance curve conditions and for other details. Curve tolerance according to ISO : 9906, Grade 3B

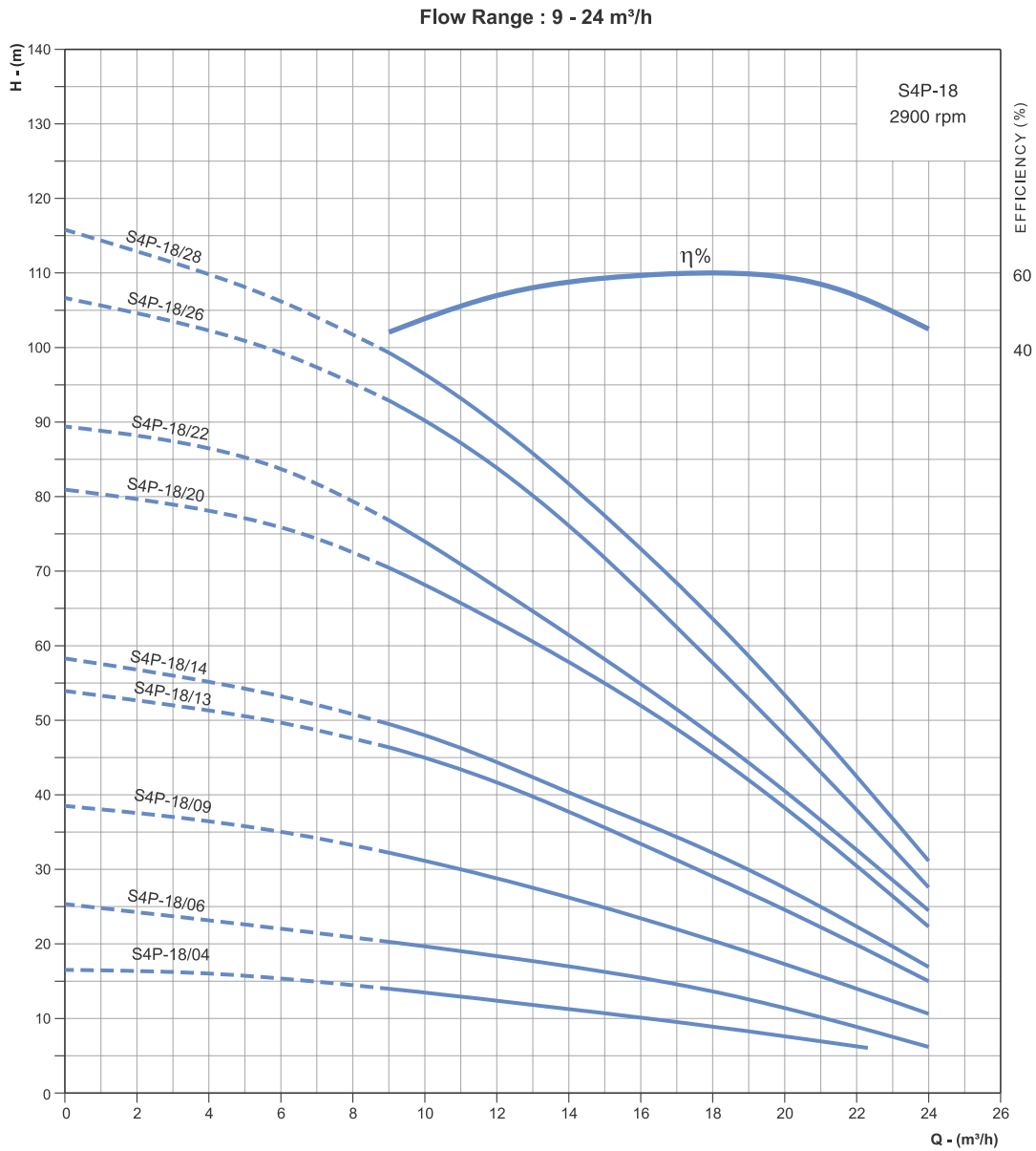
SILVER LINE SERIES

Nominal Diameter : **4"**

Nominal Flow : **18m³/h**

Outlet Size : **2"**

Performance Curves



In view of continuous developments, the informations / descriptions / specifications / illustrations are subject to change without notice. Refer general information for performance curve conditions and for other details. Curve tolerance according to ISO : 9906, Grade 3B