

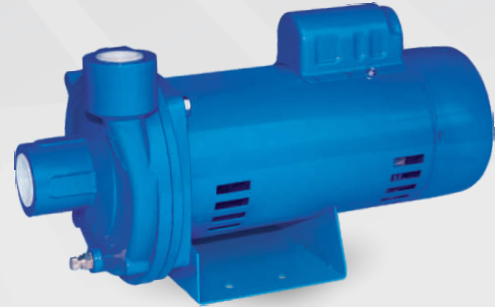


C.R.I. PUMPS

Pumping trust. Worldwide.

PERIPHERAL AND CENTRIFUGAL PUMPS

60Hz





C.R.I. PUMPS
Pumping trust. Worldwide.

T H E B E G I N N I N G

of C.R.I., way back in 1961, was a resolute attempt to produce a few irrigation equipments using the limited facilities of an in-house foundry. Eventually the founder's dream was coming true as the small production unit he started kept growing rapidly. Now, after more than five eventful decades, it is an enormous, widely reputed organization, which produces more than 1800 varieties of perfectly engineered pumps and motors and sells its products in numerous countries spread across 6 continents.

C . R . I . I S O N E A M O N G

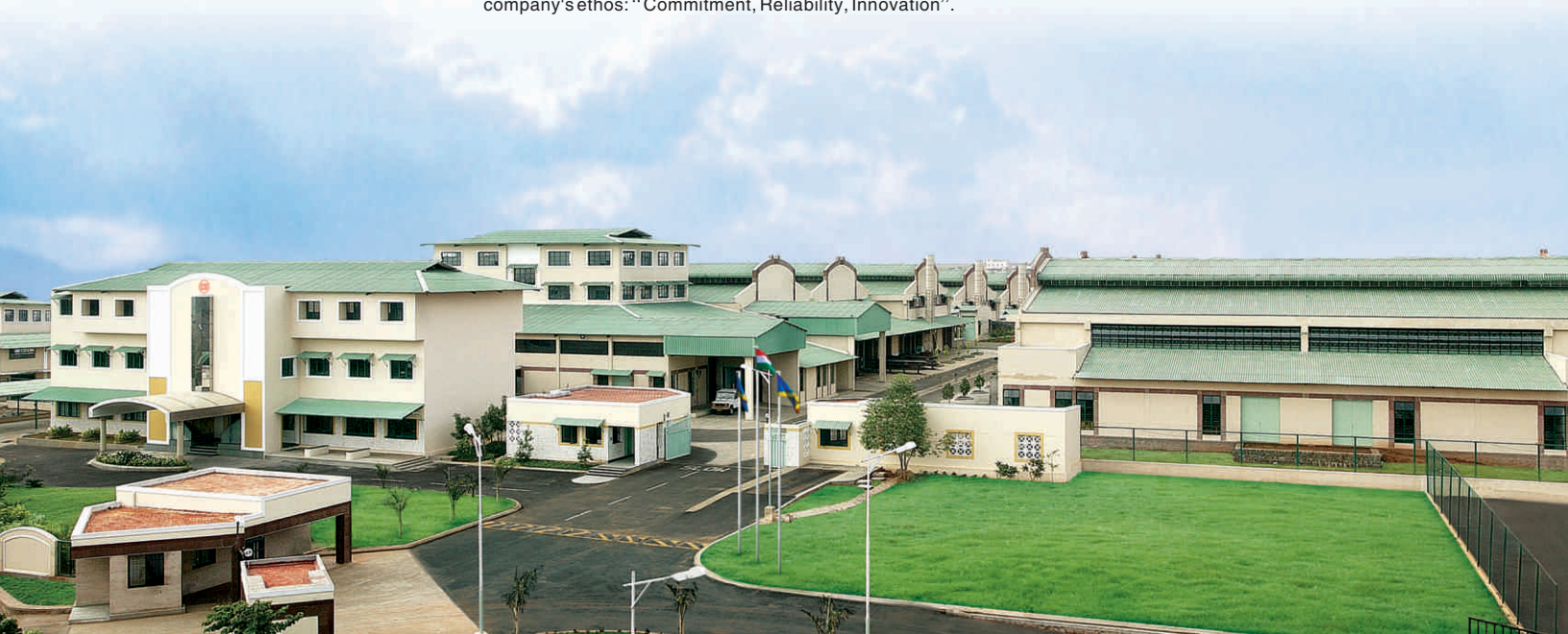
the few pioneers in the world to produce 100% stainless steel submersible pumps. Having achieved a record production capacity of over 2 million pumps per annum, today C.R.I. is rubbing its shoulders with the best brands in the world, with advanced technology and safety standards as its hallmarks.

T H E I N F R A S T R U C T U R E

of C.R.I. is pretty comprehensive with state-of-the-art machineries and high potential in-house R&D recognised by the ministry of science and technology, Govt. of India - all within its own covered area of 300,000 square metres. The production environment is accredited with ISO 9001 & 14001 certifications and the products are CE, UR/UL, IEC, TSE & ISI certified. The R&D team always stays in tune with the changing scenario and seldom fails in coming up with outstanding solutions every time.

N E E D L E S S T O S A Y ,

behind this legendary growth lies the untiring, innovative, enthusiastic and dedicated team work. and, of course, a flawlessly maintained value system too. The name C.R.I. itself encapsulates the company's ethos: "Commitment, Reliability, Innovation".



Peripheral Pumps (PE SERIES)

Features : Sturdy and compact | Quiet and maintenance free | Excellent hydraulic performance | Good suction lift characteristics | SS insert is provided in the pump casing | Incorporated with thermal overload protector | Dynamically balanced rotating parts.

Applications : Residential | Gardens | Washing Systems | Pressure Boosting Unit | Civil Applications.



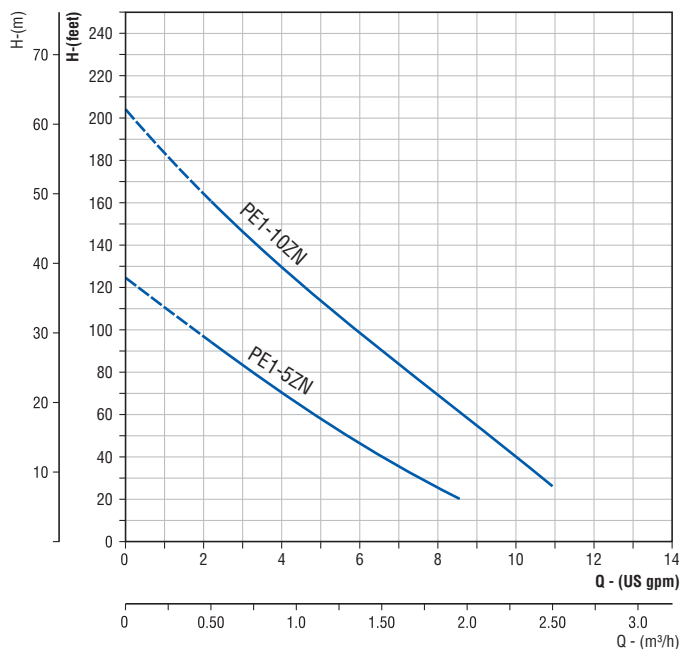
MATERIALS OF CONSTRUCTION

Pump Casing	: Cast Iron with SS insert
Motor Frame	: Aluminium
Impeller	: Forged Brass
Pump Bracket	: Cast Iron
Shaft	: S.S. 304 + Carbon Steel #45
Water Filling Plug	: Brass
Mechanical Seal	: Carbon & Ceramic
'O' Ring Seals	: NBR

PUMP OPERATING LIMITS

Maximum Suction Lift upto	: 26 ft / 8 m
Flow Rate upto	: 10.5 GPM / 2.4 m ³ /h
Maximum Head upto	: 203 ft / 62 m
Maximum Operating Pressure	: 87 PSI / 6 bar
Maximum Liquid Temperature	: 122°F / 50°C
Maximum Ambient Temperature	: 104°F / 40°C

PERFORMANCE CURVES



SPECIFICATIONS

Power Range	: 0.5 HP & 1 HP
Speed	: 3450 rpm
Versions	: 1Ph, 110/220V, 60Hz (Permanent split capacitor-PSC) Incorporated with Thermal overload Protector
Direction of Rotation	: Clockwise viewed from driving end
Type of Duty	: S1 (Continuous)
Degree of Protection	: IP 54
Class of Insulation	: 'B'
Suction & Delivery Size	: 1" x 1" BSP / NPT

PERFORMANCE TABLE

PUMP MODEL	MOTOR POWER		NOMINAL PUMP SIZE (Suc x Del)	m ³ /h	0	0.45	0.9	1.36	1.82	2.27	2.72
	HP	kW			US-gpm	0	2	4	6	8	10
PE1-5ZN	0.5	0.37	1" x 1"	Total Head in feet	125	98	70	47	25	20 (8.5gpm)	
PE1-10ZN	1.0	0.75	1" x 1"		203	165	130	99	70	40	27 (10.9gpm)

In view of continuous developments the information / performance / descriptions / specifications / Illustrations are subject to change without notice.

Self-Priming Jet Pumps (JTB SERIES)



Features : High operating efficiency resulting in lower power consumption | Good suction lift characteristics | Dynamically balanced rotating parts including rotor and impeller | Compact and rigid construction | Inbuilt thermal overload protector in all single phase pumps.

Applications : Shallow Well | Houses | Irrigation | Small Farms | Domestic Pressure Boosting units | Small Industries | Washing Systems.

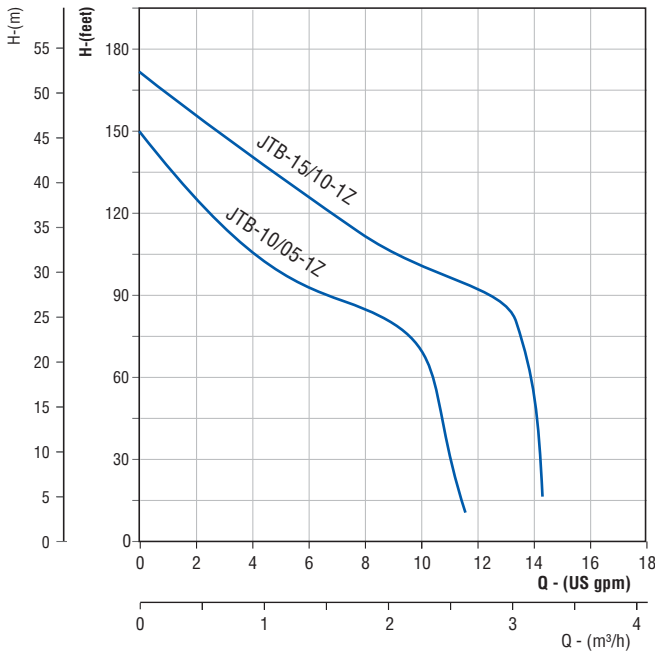
MATERIALS OF CONSTRUCTION

Pump Casing	: Cast Iron
Motor Frame	: Aluminium
Impeller	: Brass
Shaft	: S.S 304 + Carbon Steel #45
Mechanical Seal	: Carbon & Ceramic

PUMP OPERATING LIMITS

Maximum Head	: 177 ft / 54 m
Maximum Suction lift	: 23 ft / 7 m
Maximum liquid Temperature	: 104°F / 40°C
Maximum Ambient Temperature	: 122°F / 50°C

PERFORMANCE CURVES



SPECIFICATIONS

Power Range	: 0.5 HP - 1.0 HP
Speed	: 3450 rpm
Versions	: 1Ph, 110/220V, 60Hz (Permanent Split Capacitor-PSC) Incorporated with thermal overload protector 3Ph, 220/380/460V, 60Hz
Direction of Rotation	: Clock wise viewed from driving end
Type of Duty	: S1 (Continuous)
Degree of Protection	: IP 55
Class of insulation	: "F" / "B"
Suction & Delivery Sizes	: 1" x 1" BSP / NPT

PERFORMANCE TABLE

PUMP MODEL	MOTOR POWER		NOMINAL PUMP SIZE (Suc x Del)	m³/h	0	0.45	0.9	1.36	1.82	2.27	2.72	3.18
	HP	kW			US-gpm	0	2	4	6	8	10	12
JTB-10/05-1Z	0.5	0.37	1" x 1"	Total Head in feet	150	124	105	92	85	72	10 (11.7gpm)	
JTB-15/10-1Z	1.0	0.75	1" x 1"		171	155	139	125	110	101	92	16 (14.2gpm)

In view of continuous developments the information / performance / descriptions / specifications / Illustrations are subject to change without notice.

STAINLESS STEEL Self-Priming Jet Pumps (JTS SERIES)

Features : High operating efficiency resulting in lower power consumption
 | Good suction lift characteristics | Dynamically balanced rotating parts including rotor and impeller | Compact and rigid construction | Inbuilt thermal overload protector in all single phase pumps | All wet parts are made of corrosion resistant stainless steel material.

Applications : Shallow wells | Houses | Small farms | Garden | Domestic pressure boosting | Car washing | Small industries | Drinking water supply
 | Food processing Industries.



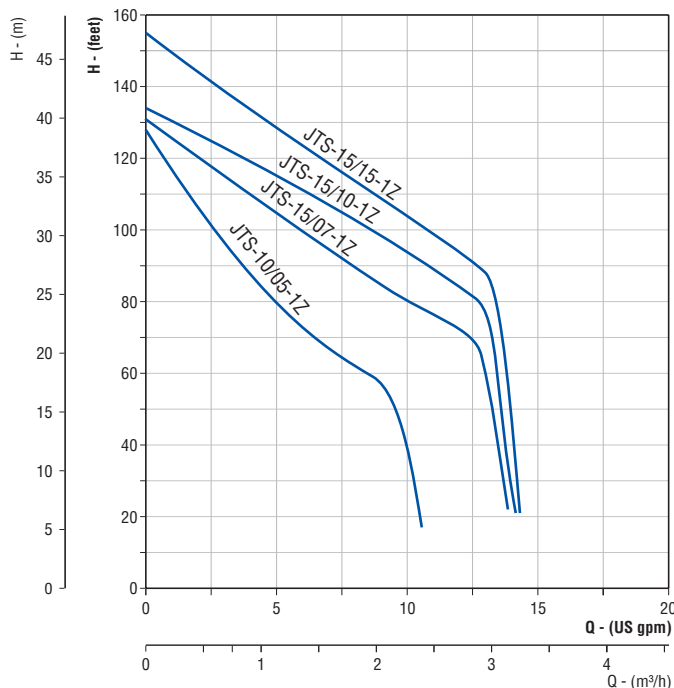
MATERIALS OF CONSTRUCTION

Pump Casing	: S.S 304
Motor Frame	: Aluminium
Impeller	: S.S 304
Shaft	: S.S 304 + Carbon Steel #45
Mechanical Seal	: Carbon & Ceramic

PUMP OPERATING LIMITS

Maximum Head	: 148 ft / 44 m
Maximum Suction lift	: 23 ft / 7 m
Maximum liquid Temperature	: 140°F / 60°C
Maximum Ambient Temperature	: 122°F / 50°C

PERFORMANCE CURVES



SPECIFICATIONS

Power Range	: 0.5 HP - 1.5 HP
Speed	: 3450 rpm
Versions	: 1Ph, 110/220V, 60Hz (Permanent Split Capacitor-PSC) Incorporated with thermal overload protector 3Ph, 220/380/460V, 60Hz
Direction of Rotation	: Clock wise viewed from driving end
Type of Duty	: S1 (Continuous)
Degree of Protection	: IP 55
Class of insulation	: "F" / "B"
Suction & Delivery Sizes	: 1" x 1" BSP / NPT

PERFORMANCE TABLE

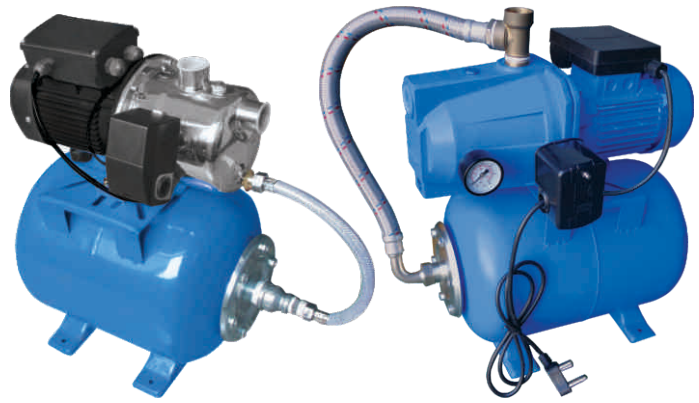
PUMP MODEL	MOTOR POWER		NOMINAL PUMP SIZE (Suc x Del)	Total Head in feet							
	HP	kW		m³/h	0	0.57	1.13	1.7	2.27	2.84	3.18
				US-gpm	0	2.5	5	7.5	10	12.5	14
JTS-10/05-1Z	0.5	0.37	1" x 1"	Total Head in feet	127	101	80	64	40	20(10.5gpm)	
JTS-15/07-1Z	0.75	0.55	1" x 1"		131	117	104	92	80	70	22(13.2gpm)
JTS-15/10-1Z	1.0	0.75	1" x 1"		134	125	115	105	94	82	21(13.5gpm)
JTS-15/15-1Z	1.5	1.1	1" x 1"		155	141	128	115	103	91	21

In view of continuous developments the information / performance / descriptions / specifications / Illustrations are subject to change without notice.

Automatic Pressure Booster System

FEATURES

Sets free from operating the pump every time manually
 | Eliminates need of overhead tank & float switch | Ensures uninterrupted water supply with adequate pressure always
 | Saves water, electricity & time | Designed for easy installation.



SPECIFICATIONS

Power Range : 0.5 HP - 1.5 HP
 Speed : 3450 rpm
 Versions : 1Ph, 110/220V, 60Hz (Permanent Split Capacitor-PSC)
 Incorporated with thermal overload protector
 3Ph, 220/380/460V, 60Hz
 Direction of Rotation : Clock wise viewed from driving end
 Type of Duty : S1 (Continuous)
 Degree of Protection : IP 55
 Class of insulation : "F" / "B"
 Suction and Delivery Sizes : 1" x 1" BSP / NPT

PUMP OPERATING LIMITS

Maximum Head : 148 ft / 45 m
 Maximum Suction lift : 23 ft / 7 m
 Maximum liquid Temperature : 104°F / 40°C
 Maximum Ambient Temperature : 131°F / 55°C

APPLICATIONS

For all pressure boosting applications in Houses | Multi-storeyed Apartments | Villas | Gardens | Commercial centers | Hotels | Restaurants, etc.,

PERFORMANCE DETAILS

Pressure Booster System with Stainless Steel Pumps

MODEL	TANK CAPACITY in Its	MOTOR POWER		Inlet & Outlet Size in Inches	Head (Suc) in feet	m³/h	2.27	2.84	3.18	Pressure switch setting (PSI)		Pressure level in pressure tank (PSI)
		HP	kW							ON	OFF	
P24-JTS-15/07-1Z	24	0.75	0.55	1 x 1	23	Head in feet	80	70	22	20	40	30
P24-JTS-15/10-1Z	24	1.0	0.75	1 x 1	23		94	82	21	30	50	30
P24-JTS-15/15-1Z	24	1.5	1.1	1 x 1	23		103	91	21	30	50	30

MODEL	TANK CAPACITY in Its	MOTOR POWER		Inlet & Outlet Size in Inches	Head (Suc) in feet	m³/h	1.82	2.27	2.72	Pressure switch setting (PSI)		Pressure level in pressure tank (PSI)
		HP	kW							ON	OFF	
P24-JTB-10/05-1Z	24	0.5	0.37	1 x 1	23	Head in feet	85	72	10	20	40	30
P24-JTB-15/10-1Z	24	1.0	0.75	1 x 1	23		110	101	92	30	50	30

The above models can be supplied with 60 ltrs tank also.

In view of continuous developments the information / performance / descriptions / specifications / Illustrations are subject to change without notice.

Centrifugal Monoblock Pumps

(CTB SERIES)

Features : High operating efficiency resulting in lower power consumption
 | Good suction lift characteristics | Dynamically balanced rotating parts including rotor and impeller | Compact and rigid construction | Inbuilt thermal overload protector in all single phase pumps.

Applications : Residential | Irrigation | Small Farms | Pressure Boosting units
 | Industrial Water Supply | Washing Systems



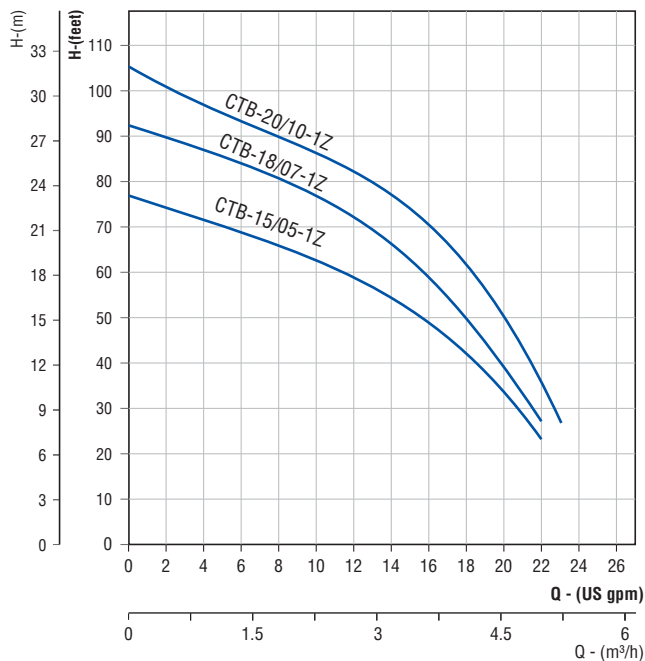
MATERIALS OF CONSTRUCTION

Pump Casing	: Cast Iron
Motor Frame	: Aluminium
Impeller	: Bronze / Cast Iron
Shaft	: S.S 304 + Carbon Steel #45
Mechanical Seal	: Carbon & Ceramic

PUMP OPERATING LIMITS

Maximum Head	: 105 ft / 32 m
Maximum Suction lift	: 23 ft / 7 m
Maximum liquid Temperature	: 104°F / 40°C
Maximum Ambient Temperature	: 122°F / 50°C

PERFORMANCE CURVES



SPECIFICATIONS

Power Range	: 0.5 HP - 2 HP
Speed	: 3450 rpm
Versions	: 1Ph, 110/220V, 60Hz (upto 1.5HP) 1Ph, 220V, 60Hz (2HP) (Permanent Split Capacitor-PSC) Incorporated with thermal overload protector 3Ph, 220/380/460V, 60Hz
Direction of Rotation	: Clock wise viewed from driving end
Type of Duty	: S1 (Continuous)
Degree of Protection	: IP 55
Class of insulation	: "F" / "B"
Suction & Delivery Sizes	: 1" x 1", 1½" x 1½" & 2" x 2" BSP/NPT

PERFORMANCE TABLE

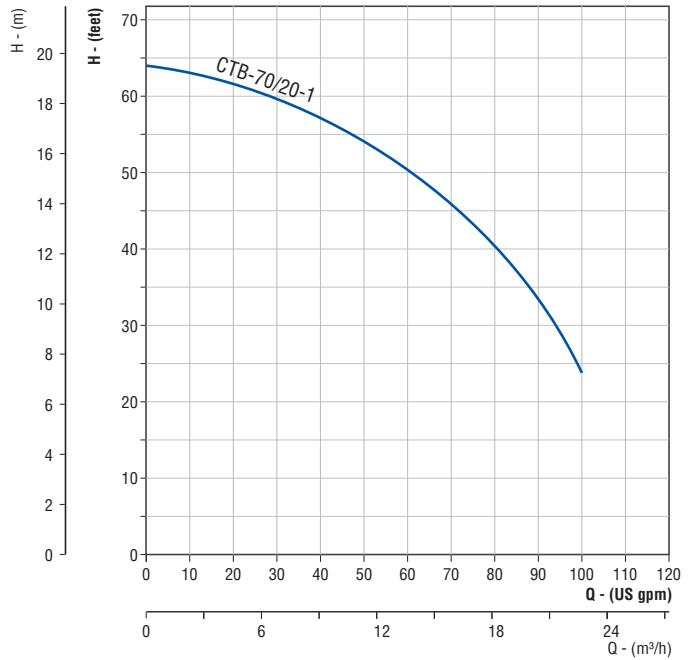
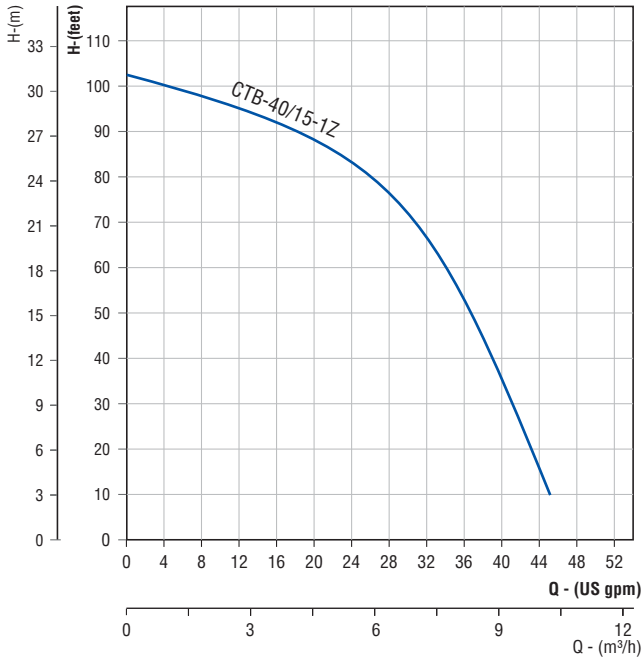
PUMP MODEL	MOTOR POWER		NOMINAL PUMP SIZE (Suc x Del)	m³/h	0	0.9	1.82	2.72	3.63	4.54	5	5.22
	HP	kW			US-gpm	0	4	8	12	16	20	22
CTB-15/05-1Z	0.5	0.37	1" x 1"	Total Head in feet	77	72	65	59	49	34	23	
CTB-18/07-1Z	0.75	0.55	1" x 1"		92	87	81	72	59	39	28	
CTB-20/10-1Z	1.0	0.75	1" x 1"		105	97	90	82	71	50	36	28

In view of continuous developments the information / performance / descriptions / specifications / Illustrations are subject to change without notice.

Centrifugal Monoblock Pumps (CTB SERIES)



PERFORMANCE CURVES



PERFORMANCE TABLE

PUMP MODEL	MOTOR POWER		NOMINAL PUMP SIZE (Suc x Del)	m³/h	0	1.82	3.63	5.45	6.35	7.27	8.17	9.08	10.22
	HP	kW			US-gpm	0	8	16	24	28	32	36	40
CTB-40/15-1Z	1.5	1.1	1½" x 1½"	Total Head in feet	31	29.5	28	25	23	20	16	11	3

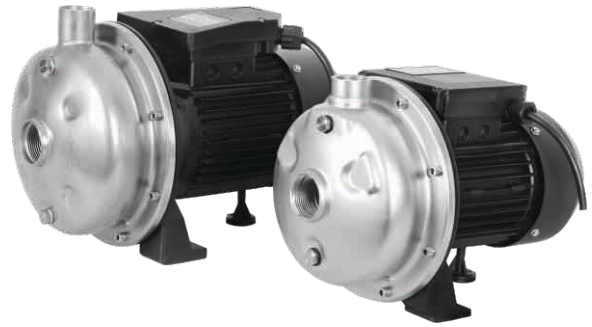
PUMP MODEL	MOTOR POWER		NOMINAL PUMP SIZE (Suc x Del)	m³/h	0	4.54	9.08	11.36	13.63	15.90	18.17	20.44	22.71
	HP	kW			US-gpm	0	20	40	50	60	70	80	90
CTB-70/20-1	2	1.5	2" x 2"	Total Head in feet	64	62	57	54.5	50	46	40	33	24

In view of continuous developments the information / performance / descriptions / specifications / Illustrations are subject to change without notice.

STAINLESS STEEL Centrifugal Pumps (CTSS SERIES)

Features : High Operating efficiency resulting in lower power consumption
 | Good suction lift characteristics | Dynamically balanced rotating parts |
 Balanced and rigid construction | Inbuilt thermal overload protector in all single
 phase pumps | Complete SS construction more suitable for potable water.

Applications : Residential | Irrigation | Small Farms | Pressure Boosting Units
 | Industrial Water Supply | Food Processing Industries | Washing Systems.



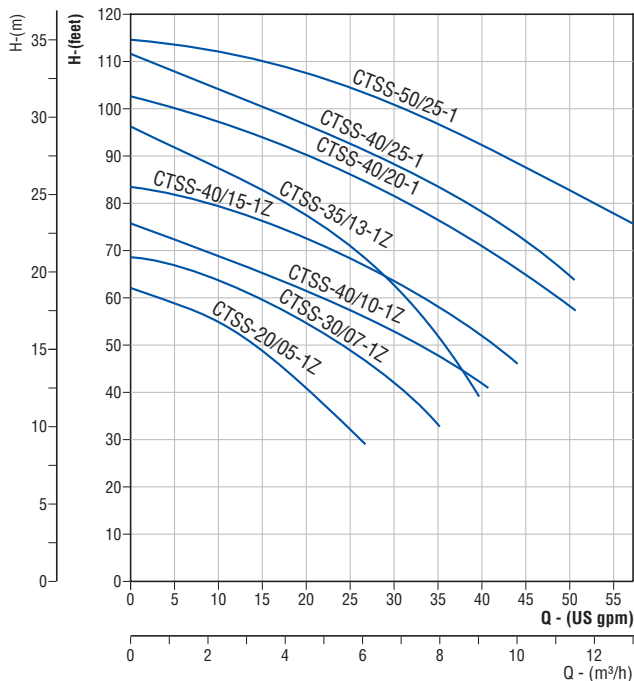
MATERIALS OF CONSTRUCTION

Pump Casing	: S.S 304
Motor Frame	: Aluminium
Impeller	: S.S 304
Shaft	: S.S 304 + Carbon Steel #45
Mechanical Seal	: Carbon & Ceramic

PUMP OPERATING LIMITS

Maximum Head	: 115 ft / 35 m
Maximum Suction lift	: 23 ft / 7 m
Maximum Liquid Temperature	: 140°F / 60°C
Maximum Ambient Temperature	: 122°F / 50°C

PERFORMANCE CURVES



SPECIFICATIONS

Power Range	: 0.5 HP - 40 HP, 2 Pole
Speed	: 3450 rpm
Versions	: 1Ph, 110/220V, 60Hz (Upto 1.5HP) 1Ph, 220V, 60Hz (2HP & above) (Permanent Split Capacitor-PSC) Incorporated with thermal overload protector 3Ph, 220/380/460V, 60Hz
Direction of Rotation	: Clock wise viewed from driving end
Type of Duty	: S1 (Continuous)
Degree of Protection	: IP 55
Class of insulation	: "F" / "B"
Suction & Delivery Sizes	: 1¼" x 1", 1½" x 1¼", 2" x 2" BSP / NPT

PERFORMANCE TABLE

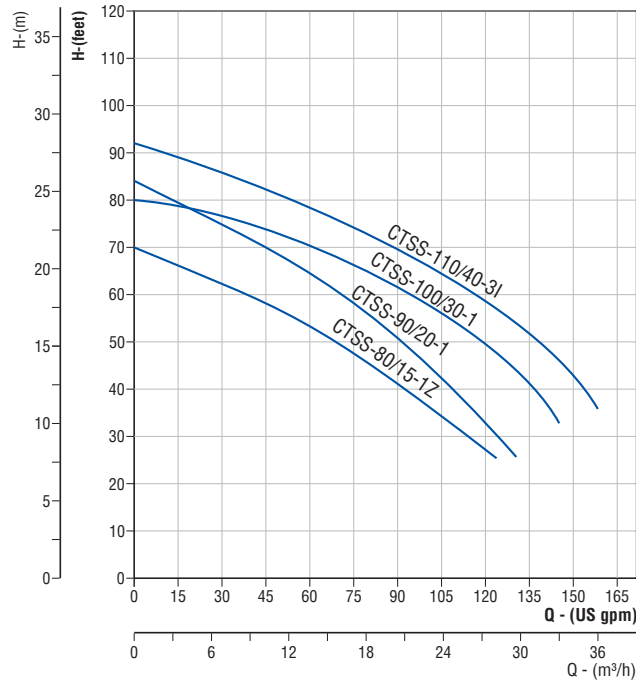
PUMP MODEL	MOTOR POWER		NOMINAL PUMP SIZE (Suc x Del)	Flow Rate (Q)							
	HP	kW		m³/h	0	2.27	4.54	6.81	9.08	11.36	13.63
				US-gpm	0	10	20	30	40	50	60
CTSS-20/05-1Z	0.5	0.37	1¼" x 1"	Total Head in feet	62	55	40	30 (26gpm)			
CTSS-30/07-1Z	0.75	0.55	1¼" x 1"		69	63	54	42	33 (35gpm)		
CTSS-40/10-1Z	1.0	0.75	1¼" x 1"		75	69	61	53	39		
CTSS-35/13-1Z	1.3	1.0	1¼" x 1"		96	88	78	63	42		
CTSS-40/15-1Z	1.5	1.1	1¼" x 1"		83	79	72	64	52	46 (44gpm)	
CTSS-40/20-1	2.0	1.5	1¼" x 1"		102	98	90	81	71	58	
CTSS-40/25-1	2.5	1.85	1¼" x 1"		112	104	97	88	78	64	
CTSS-50/25-1	2.5	1.85	1½" x 1¼"		116	112	108	101	92	83	76 (57gpm)

In view of continuous developments the information / performance / descriptions / specifications / Illustrations are subject to change without notice.

STAINLESS STEEL Centrifugal Pumps (CTSS SERIES)



PERFORMANCE CURVES



PERFORMANCE TABLE

PUMP MODEL	MOTOR POWER		NOMINAL PUMP SIZE (Suc x Del)	Flow Rate (Q)										
	HP	kW		m³/h	0	6.81	10.22	13.63	17.03	20.44	23.85	27.25	30.66	35.88
				US-gpm	0	30	45	60	75	90	105	120	135	158
CTSS-80/15-1Z	1.5	1.1	2" x 2"	Total Head in feet	70	62	58	53	47	41	34	27		
CTSS-90/20-1	2.0	1.5	2" x 2"		80	74	70	64	58	50	42	33	26 (130gpm)	
CTSS-100/30-1	3.0	2.2	2" x 2"		83	77	73	70	66	62	56	50	41	33 (145gpm)
CTSS-110/40-3I	4.0	3.0	2" x 2"		92	85	82	78	74	70	65	59	52	36

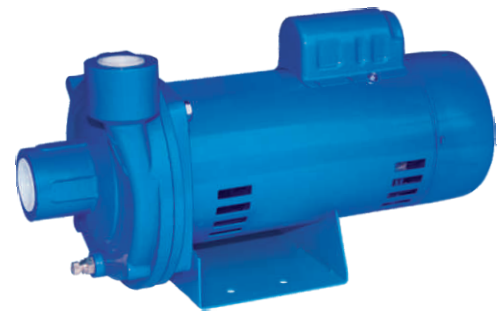
In view of continuous developments the information / performance / descriptions / specifications / Illustrations are subject to change without notice.

Centrifugal Pumps

(CND SERIES)

Features : High Operating efficiency resulting in lower power consumption
 | Good suction lift characteristics | Dynamically balanced rotating parts
 | Balanced and rigid construction | Inbuilt thermal overload protector in all single phase pumps.

Applications : Residential | Irrigation | Garden | Small Industries.



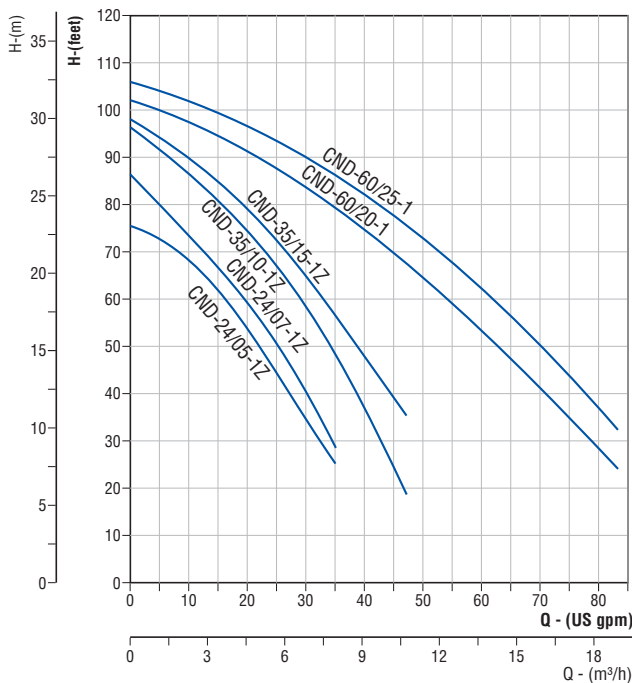
MATERIALS OF CONSTRUCTION

Pump Casing	: Cast Iron
Motor Frame	: Mild steel
Impeller	: Plastic
Shaft	: S.S 304 + Carbon Steel #45
Mechanical Seal	: Carbon / Ceramic

PUMP OPERATING LIMITS

Maximum Head	: 106 ft / 32 m
Maximum Suction lift	: 23 ft / 7 m
Maximum liquid Temperature	: 140°F / 60°C
Maximum Ambient Temperature	: 104°F / 40°C

PERFORMANCE CURVES



SPECIFICATIONS

Power Range	: 0.5 HP - 2.5 HP, 2 Pole
Speed	: 3450 rpm
Versions	: 1Ph, 110/220V, 60Hz (Upto 1.5HP) 1Ph, 220V, 60Hz (2HP & above) (Permanent Split Capacitor-PSC) Incorporated with thermal overload protector 3Ph, 220/380/460V, 60Hz
Direction of Rotation	: Clock wise viewed from driving end
Type of Duty	: S1 (Continuous)
Degree of Protection	: IP 22
Class of insulation	: "B"
Suction & Delivery Sizes	: 1¼" x 1", 1½" x 1¼", 2" x 1½" BSP / NPT

PERFORMANCE TABLE

PUMP MODEL	MOTOR POWER		NOMINAL PUMP SIZE (Suc x Del)	m³/h	0	2.72	5.45	8.17	10.90	13.63	16.35	19.08
	HP	kW			US-gpm	0	12	24	36	48	60	72
CND-24/05-1Z	0.5	0.37	1¼" x 1"	Total Head in feet	75	67	48	25				
CND-24/07-1Z	0.75	0.55	1¼" x 1"		86	71	52	28				
CND-35/10-1Z	1.0	0.75	1¼" x 1"		96	85	68	47	19			
CND-35/15-1Z	1.5	1.1	1¼" x 1"		98	88	73	57	35			
CND-60/20-1	2.0	1.5	1½" x 1¼"		101	97	88	78	66	54	40	24
CND-60/25-1	2.5	1.85	2" x 1½"		126	101	97	84	75	66	54	31

In view of continuous developments the information / performance / descriptions / specifications / Illustrations are subject to change without notice.

C.R.I. PUMPS (PVT) LIMITED

(International Division)

7/46-1, Keeranatham Road, Saravanampatty, Coimbatore - 641 035. India.

Phone : +91-422-3911610, 3911612. Fax : +91-422-3911600, e-mail : cri@criexports.com website : crigroups.com

BOMBAS C.R.I. ESPAÑA, S.L.

Poligono Industriail El.Bony Calle 31, No. 137, 46470
Catarroja (Valencia) Spain.

Tel : +34-96 1842 974, Fax : +34-96 1842 977

e-mail : cri@bombascri.es website : www.bombascri.es

BOMBAS C.R.I. ESPAÑA S.L. UNIPERSONAL

Via Linara 8, 82030, Limatola-BENEVENT O-Italy
Tel : +39. 0823 586 904

e-mail : cri@bombascri.it website:www.crigroups.com

C.R.I. BOMBAS HIDRÁULICAS LTDA

Av. Rodrigo Fernando Grillo, 457, Jd. Manacas,
CEP - 14.801-534, Araraquara - SP, Brasil.

Fone : +55-16-3331 1099, Fax : +55-16-3331 5344

e-mail : cri@cribombas.com.br website : www.cribombas.com.br

Filial : Jaboatão dos Guararapes-PE, Brasil.

Fone : (81) 3093-9620, Fax : (81) 3093-9600.

C.R.I. PUMPS S.A. (PTY) LIMITED

P.O. Box 6292, Halfway House, Midrand - 1685,
Johannesburg, South Africa.

Tel : +27-11-8058631 / 32, Fax : +27-11-8058630

e-mail : cri@cripumps.co.za website : www.cripumps.co.za

Branch : Capetown : + 27-21-9499122

C.R.I. POMPA SANAYİ VE TİCARET LİMİTED ŞİRKETİ

10032 Sk. No:12 A.O.S.B. 35620 Çiğli-İzmir-Türkiye.

Tel : +90-232-328-328 22 99, Fax : +90-232-328 23 33

e-mail : cri@cripompa.com website : www.cripompa.com

C.R.I. FLUID SYSTEMS USA LLC

1551 Mineral Springs Rd, Elberton, GA 30635 USA.

Tel : (470) 226 3393, Email : sales@crigroups.us

Website : www.crigroups.us

C.R.I. PUMPS (FZE)

P.O. Box 7988, A4-12 SAIF-Zone, Sharjah, U.A.E.

Tel : +971-6-5573041 (3 Lines), Fax : +971-6-5573042

e-mail : cripumps@eim.ae website : www.cripumps.ae

C.R.I. FLUID SYSTEMS INC.,

Polyland Industrial Subdivision, Warehouse 3 Block 4,
Kendex St., Bo. Iba, Meycauayan, Bulacan. Philippines

Website : www.cripumps.ph

C.R.I. FLUID SYSTEMS (BD) LTD.,

Ground Floor, Unit-1 Holding No 212, Tejgaon Industrial Area,
Tejgaon - Gulshan Link Rd, Dhaka - 1208, Bangladesh

Website : www.cripumps.com.bd

C.R.I. PUMPS (Shanghai) Co., Ltd.

Room 902, Building No.7, 1855 Qixin Road,
Minhang District, Shanghai - 201101. China.

Tel : +86-21-54405082, Fax : +86-21-54405083

e-mail : cri@bombascri.com.cn

website : www.bombascri.com.cn

SUZHOU C.R.I. PUMPS CO., LTD.

579, Longqia Road, Wujiang District - 215200

Suzhou, China. Telephone : +86-512-634 33668

Fax : +86-512-634 33667, e-mail : cri@crisuzhou.com.cn