



C.R.I. PUMPS

Pumping trust. Worldwide.

VERTICAL MULTISTAGE PUMPS - 50 Hz

MSP - SERIES



An ISO 9001, ISO 14001 & OSHAS 18001 Company



*For specific models only.

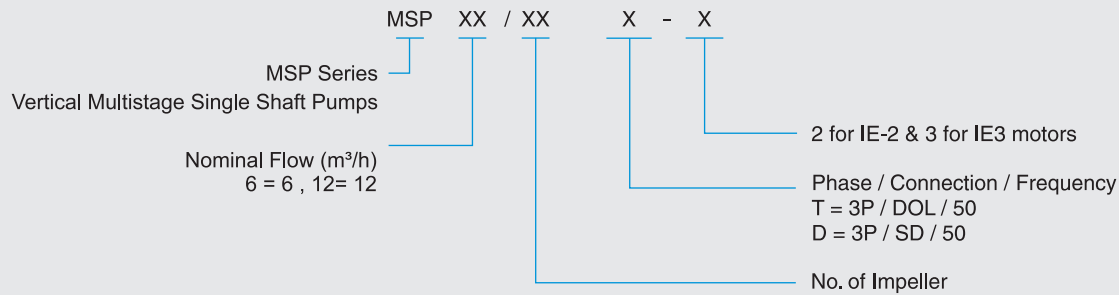
VERTICAL MULTISTAGE PUMPS - MSP SERIES

C.R.I. MSP - Series vertical multistage pumps are designed in single shaft construction which eliminates transmission losses between pump and the motor. Major components of these pumps are made up of corrosive resistant stainless steel and engineering polymer which makes these pumps robust in construction with best possible hydraulic efficiencies. These pumps are offered with premium efficiency motors and are suitable for high pressure application such as reverse osmosis, pressure boosting, building services, industries, industrial washing etc

- Design Features :**
- Compact single shaft robust construction
 - Pump shell, impeller and shaft are made up of corrosive resistant stainless steel
 - Equipped with premium efficiency motors
 - Supplied with counter/companion flanges

- Application :**
- Domestic and industrial pressure boosting system
 - High pressure application in industries
 - Utility services in buildings and industries

MODEL IDENTIFICATION CODE - MSP SERIES



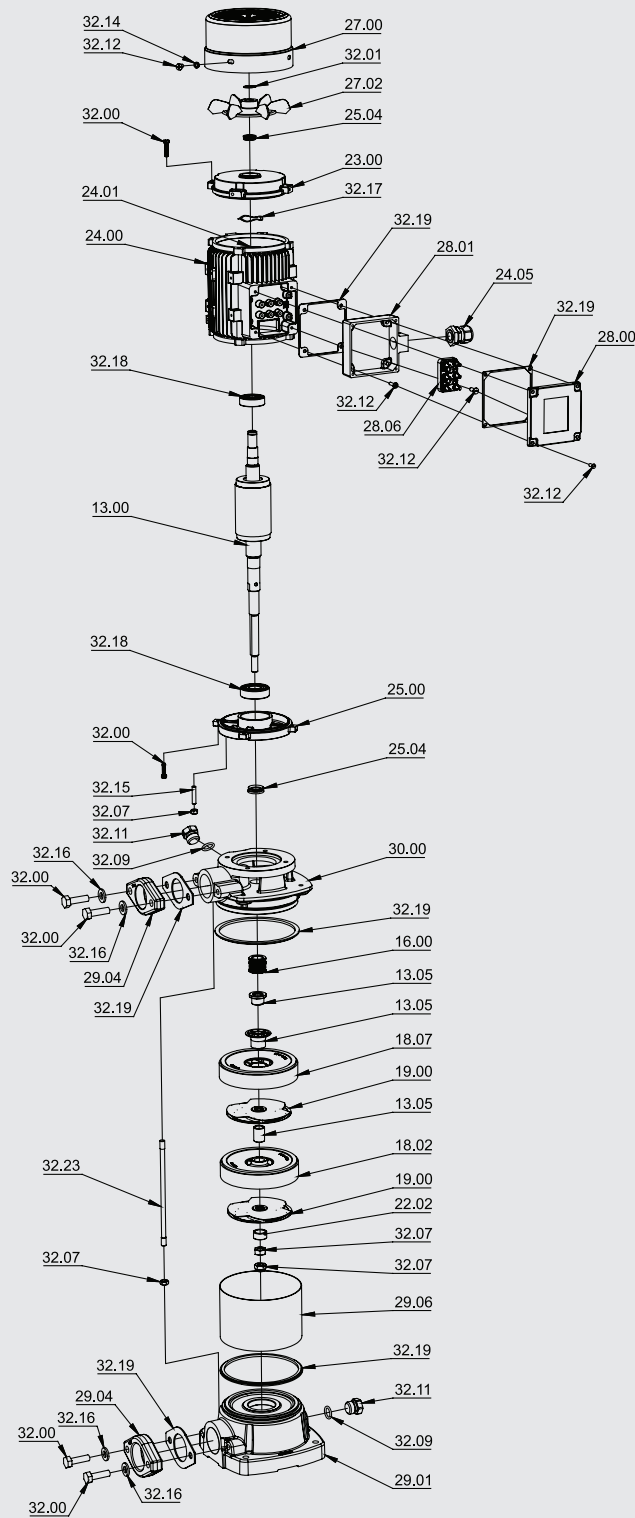
Operating Parameters	
Flow	Upto 18m ³ /h
Head	Upto 137m
Suction and Delivery Size	40 x 32 mm
Liquid Temperature	Upto 35°C
Mechanical seal - Face combination	SiC / SiC

Specifications	
Power Range	0.75 - 4kW
Power supply	380-415V, Three Phase, 50Hz, AC Supply
Speed	2900 rpm
Class of Insulation	F
Ingress Protection	IP55
Starting Method	Direct on Line (DOL) / Star Delta (SD)
Duty type	S1
Motor IEC efficiency class	IE2 & IE3

Material of Construction	
Impeller	Stainless Steel - 304
Diffuser	Engineering Polymer - Noryl PPO GF20%
Shaft	Stainless Steel - 410
Pump Base	Cast Iron - EN-GJL-200
Pump Head	Cast Iron - EN-GJL-200
Outer Shell	Stainless Steel - 304
Gaskets	EPDM
Pump Flange	SG Iron - EN-GJS-450-10
Motor Body	Aluminium

In view of continuous developments. The informations / descriptions / illustrations are subject to change without notice.

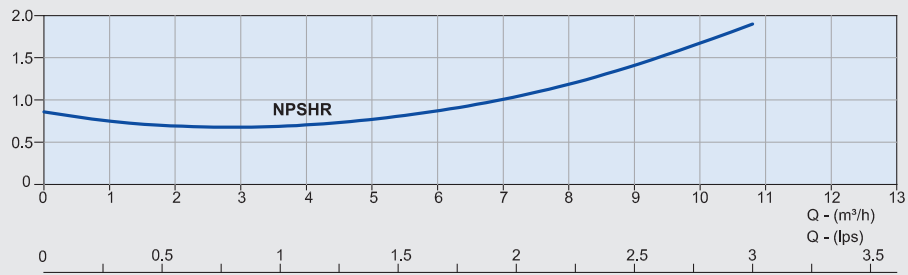
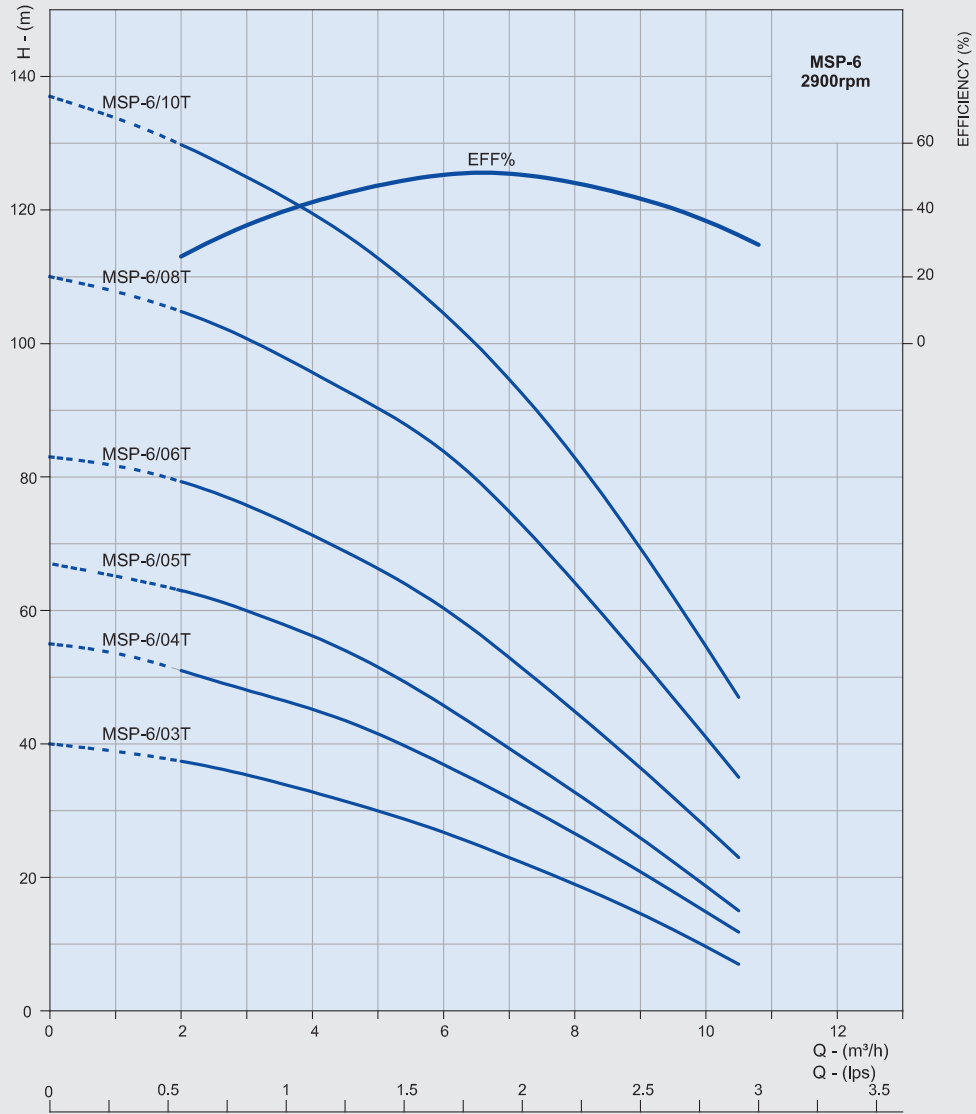
EXPLODED VIEW



Part No.	Part Name
13.00	Rotor
13.05	Sleeve
16.00	Mechanical Seal
18.02	Chamber - Bush
18.07	Chamber - Stage
19.00	Impeller
22.02	Lock Cap
23.00	Rear Cover
24.00	Motor Frame
24.01	Wound Stator
24.05	Cable Gland
25.00	Front Cover
25.04	V-Ring Seal
27.00	Cooling Fan Cover
27.02	Cooling Fan
28.00	Terminal Box Top
28.01	Terminal Box Bottom
28.06	Terminal Board
29.01	Pump Base
29.04	Flange
29.06	Outer Shell
30.00	Pump Head
32.00	Bolt
32.01	Circlip
32.07	Nut
32.09	"O" Ring
32.11	Priming Plug
32.12	Screw
32.14	Spring Washer
32.15	Stud
32.16	Washer
32.17	Wave Washer
32.18	Bearing
32.19	Gasket
32.23	Tie Rod

In view of continuous developments. The informations / descriptions / illustrations are subject to change without notice.

Performance Curve



Curve tolerance according to ISO : 9906, Grade - 3B.

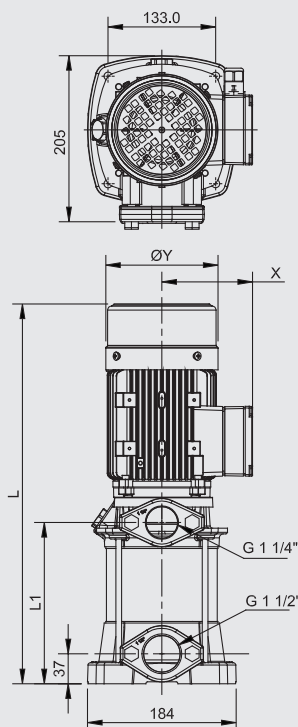
Performance Table

Pump Model	Motor power		Flow									
	kW	HP	lps	0	0.55	1.11	1.38	1.66	1.94	2.22	2.5	2.92
			m ³ /h	0	2	4	5	6	7	8	9	10.5
MSP-6/03T	0.75	1.0	Total Manometric Head in Meters	40	37.5	33	30	27	23	18	15	7
MSP-6/04T	1.1	1.5		55	51	45	42	37	32	27	21	12
MSP-6/05T	1.5	2.0		67	63.5	57	52	46	39	33	26	15
MSP-6/06T	2.2	3		83	79.5	72	66	61	53	45	37	23
MSP-6/08T	3.0	4		110	105	96	90	85	75	65	53	35
MSP-6/10T	4.0	5.5		137	130	119	114	105	95	83	70	47

Electrical Data

Product Code		Model		Power P2		Current in Amps			Motor Bearing	
3-IE2	3-IE3	3-IE2	3-IE3	kW	HP	3~			DE	NDE
						380V	400V	415V		
55935	55945	MSP-6/03T-2	MSP-6/03T-3	0.75	1	2.4	2.3	2.2	6204 2Z	6203 2Z
55936	55946	MSP-6/04T-2	MSP-6/04T-3	1.1	1.5	3.5	3.3	3.2	6204 2Z	6203 2Z
55937	55947	MSP-6/05T-2	MSP-6/05T-3	1.5	2	4.4	4.2	4	6305 2Z	6304 2Z
55938	55948	MSP-6/06T-2	MSP-6/06T-3	2.2	3	5.5	5.2	5	6306 2Z	6205 2Z
55939	55949	MSP-6/08T-2	MSP-6/08T-3	3	4	7.1	6.7	6.5	6306 2Z	6205 2Z
55940	55950	MSP-6/10T-2	MSP-6/10T-3	4	5.5	9.5	9	8.7	7306	6206 2Z

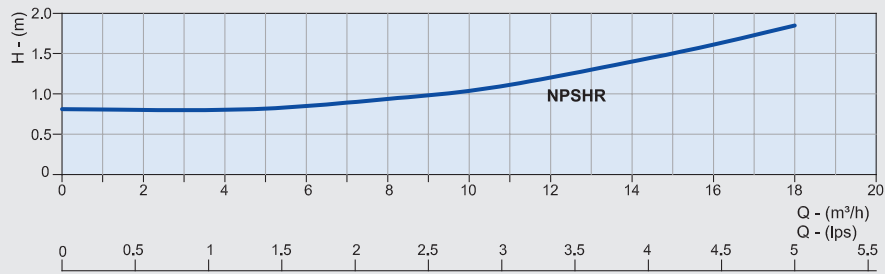
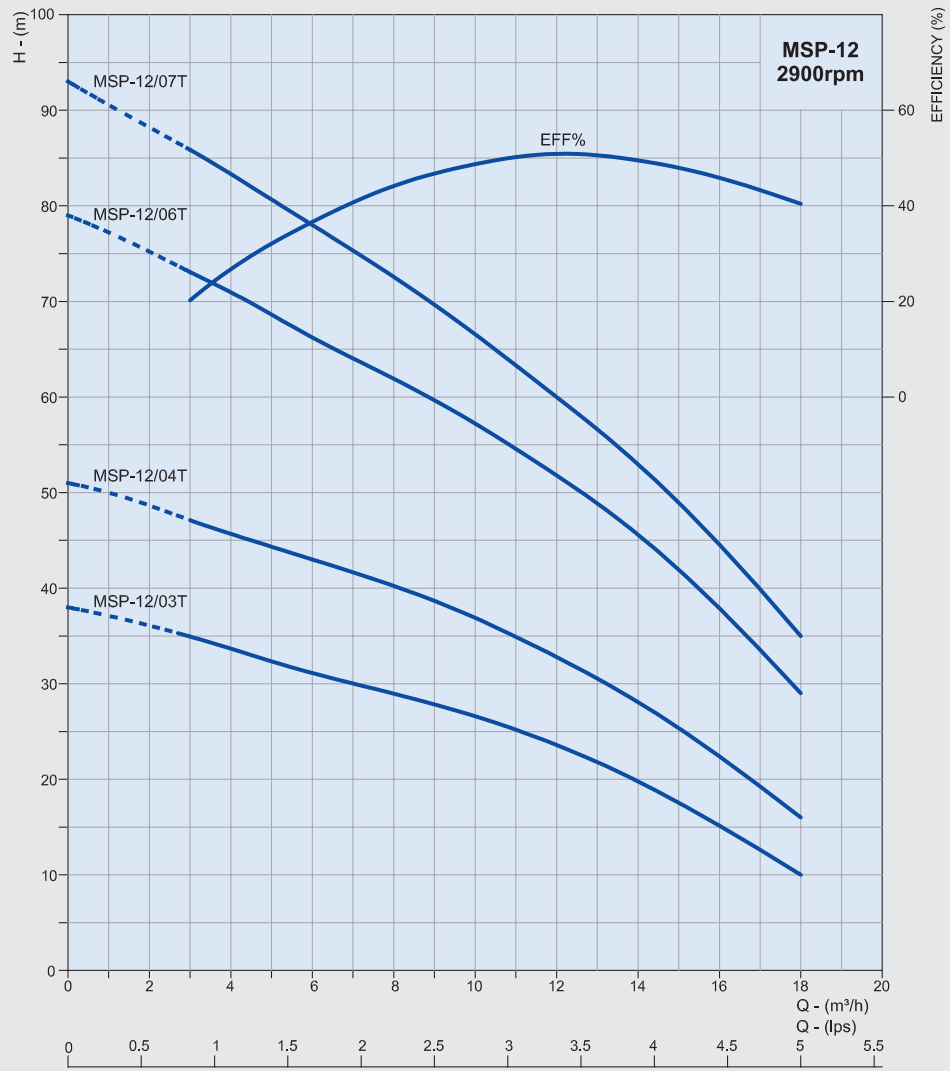
Dimension & Weight



Pump Model	Motor power		Dimension in mm				Weight (kg) ± 0.25 kg
	kW	HP	L	L1	X	ØY	
MSP-6/03T	0.75	1.0	470	199	112	139	21
MSP-6/04T	1.1	1.5	515	224	112	139	24
MSP-6/05T	1.5	2.0	570	249	121	160	26
MSP-6/06T	2.2	3	607	275	125	176	29
MSP-6/08T	3.0	4	715	323	125	176	34
MSP-6/10T	4.0	5.5	725	372	142	197	36

In view of continuous developments. The informations / descriptions / illustrations are subject to change without notice.

Performance Curve



Curve tolerance according to ISO : 9906, Grade - 3B.

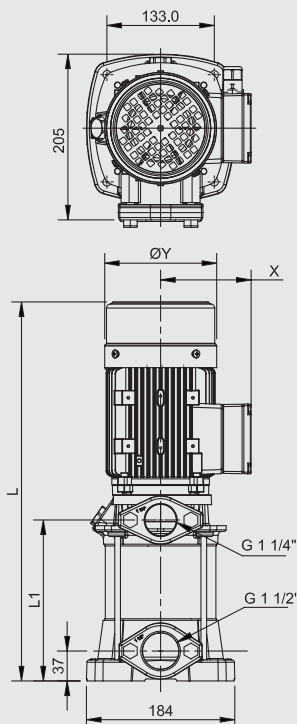
Performance Table

Pump Model	Motor power		Flow									
	kW	HP	lps	0	1.11	1.66	2.22	2.78	3.34	3.88	4.45	5
			m ³ /h	0	4	6	8	10	12	14	16	18
MSP-12/03T	1.5	2.0	Total Manometric Head in Meters	38	33	31	29	27	24	20	15	10
MSP-12/04T	2.2	3		51	46	43	40	37	33	28	22	16
MSP-12/06T	3.0	4		79	71	66	62	57	52	46	38	29
MSP-12/07T	4.0	5.5		93	84	78	73	67	60	53	44	35

Electrical Data

Product Code		Model		Power P2		Current in Amps			Motor Bearing	
3~IE2	3~IE3	3~IE2	3~IE3	kW	HP	3~			DE	NDE
						380V	400V	415V		
55941	55951	MSP-12/03T-2	MSP-12/03T-3	1.5	2	4	3.8	3.7	6305 2Z	6304 2Z
55942	55952	MSP-12/04T-2	MSP-12/04T-3	2.2	3	5.5	5.2	5	6306 2Z	6205 2Z
55943	55953	MSP-12/06T-2	MSP-12/06T-3	3	4	7.6	7.3	7	6306 2Z	6205 2Z
55944	55954	MSP-12/07T-2	MSP-12/07T-3	4	5.5	9.5	9	8.7	7306	6206.2Z

Dimension & Weight



Pump Model	Motor power		Dimension in mm				Weight (kg) ± 0.25 kg
	kW	HP	L	L1	X	ØY	
MSP-12/03T	1.5	2.0	565	245	121	160	28
MSP-12/04T	2.2	3	617	283	125	176	31
MSP-12/06T	3.0	4	754	363	125	176	36
MSP-12/07T	4.0	5.5	755	402	142	197	38.5

In view of continuous developments. The informations / descriptions / illustrations are subject to change without notice.

C.R.I. PUMPS (PVT) LIMITED

(International Division)

7/46-1, Keeranatham Road, Saravanampatty, Coimbatore - 641 035. India.

Phone : +91-422-7117310, 7117312. Fax : +91-422-7117300, e-mail : cri@crifluidsystems.com website : www.crifluidsystems.com

BOMBAS C.R.I. ESPAÑA, S.L.

Poligono Industriail El.Bony Calle 31, No. 137, 46470
Catarroja (Valencia) Spain.

Tel : +34-96 1842 974, Fax : +34-96 1842 977

e-mail : admin-es@crifluidsystems.com website : www.crifluidsystems.com

BOMBAS C.R.I. ESPAÑA S.L. UNIPERSONAL

Via del Progreso 9/13
20090 Pieve Emanuele (MI), Italy.

e-mail : admin-it@crifluidsystems.com website : www.crifluidsystems.com

C.R.I. BOMBAS HIDRÁULICAS LTDA

Av. Rodrigo Fernando Grillo, 457, Jd. Manacas,
CEP - 14.801-534, Araraquara - SP, Brasil.

Fone : +55-16-3331 1099, Fax : +55-16-3331 5344

e-mail : cri@cribombas.com.br website : www.crifluidsystems.com

Filial : Jaboatão dos Guararapes-PE, Brasil.

Fone : (81) 3093-9620, Fax : (81) 3093-9600.

C.R.I. PUMPS S.A. (PTY) LIMITED

P.O. Box 6292, Halfway House, Midrand - 1685,
Johannesburg, South Africa.

Tel : +27-11-8058631 / 32, Fax : +27-11-8058630

e-mail : cri-za@crifluidsystems.com website : www.crifluidsystems.com

C.R.I. POMPA SANAYİ VE TİCARET LİMİTED ŞİRKETİ

10032 Sk. No:12 A.O.S.B. 35620 Çiğli-Izmir-Türkiye.

Tel : +90-232-328-328 22 99, Fax : +90-232-328 23 33

e-mail : cri@cripompa.com website : www.crifluidsystems.com

PT. CRI FLUID SYSTEMS

Kawasan Industri dan Pergudangan Marunda Center

Blok B No: 23 Jalan Marunda Makmur, Segaramakmur, Tarumajaya,
Kab. Bekasi, Jawa Barat 17211, Indonesia, Ph : 021-8899 7558

Email : sales.id@crifluidsystems.com Website : www.crifluidsystems.com

C.R.I. FLUID SYSTEMS USA LLC

4655 Wright Road, Ste. 140, Stafford, TX 77477, USA.

Tel : 832-430-4660 Email : sales.us@crifluidsystems.com

Website : www.crifluidsystems.com

C.R.I. FLUID SYSTEMS MEXICO S. DE R.L. DE C.V

Ciudad de Mexico, Email : sales.mx@crifluidsystems.com, Website : www.crigroups.us

C.R.I. PUMPS (FZC)

P.O. Box 7988, A4-12 SAIF-Zone, Sharjah, U.A.E.

Tel : +971-6-5573041 (3 Lines), Fax : +971-6-5573042

e-mail : cri-uae@crifluidsystems.com website : www.crifluidsystems.com

C.R.I. FLUID SYSTEMS INC.,

Polyland Industrial Subdivision, Warehouse #3, Block 4,

Kendex St., Bo. Iba, Meycauayan, Bulacan, Philippines, Zip-3017.

Phone : +63 44 762 8887 / +63 44 802 6199, Fax : +63 44 762 8883.

e-mail : sales.ph@crigroups.com

Website : www.crifluidsystems.com

C.R.I. FLUID SYSTEMS (BD) LTD.,

Holding No. 217, Madrasa Road, Jadurchar, Hemayetpur,

Savar, Dhaka-1340, Bangladesh

Website : www.crifluidsystems.com

C.R.I. PUMPS (Shanghai) Co., Ltd.

Room 510, No 1855 Qixin Road,

Minhang District, Shanghai - 201101. China.

Tel : +86-21-54405082, Fax : +86-21-54405083

e-mail : cri@bombascri.com.cn

website : www.crifluidsystems.com

SUZHOU C.R.I. PUMPS CO., LTD.

No.198, Shexi Road, Beishe Community, Lili Town,

Wujiang District, Suzhou City,

Jiangsu Province, China.

Tel: +86-512-63433668 | Fax : +86-512-634 33667,

e-mail : cri@crisuzhou.com.cn | website : www.crifluidsystems.com



<https://www.linkedin.com/company/cri-fluid-systems>



<https://www.facebook.com/crifluidsystemsglobal/?ti=as>



https://www.instagram.com/cri_fluidsystems/

