



C.R.I. FLUID SYSTEMS

Pumping trust. Worldwide.

A FULLY INTEGRATED
SYSTEM TO PROVIDE
COST EFFECTIVE
PUMPING SOLUTIONS FOR
**MECHANICAL, ELECTRICAL
AND PLUMBING (MEP)**



NOT JUST PUMPS, COMPLETE SYSTEMS THAT PROVIDE AFFORDABLE SOLUTIONS

True to the affirmation, not just pumps, solutions, C.R.I. has always looked at the larger picture to ensure that customers get what they expect – results. With a keen understanding of customer expectations worldwide, the company brings to the fore its considerable resources in terms of infrastructure, In-house R&D and an innate perception of ground realities to bring in innovative solutions that has most often set the benchmark.

FULLY VERSATILE, COMPLETELY INTEGRATED

As a part of its efforts to provide complete solutions C.R.I. offers all that is required for a wide range of applications. Apart from pumps the system includes highly reliable variable frequency drives with single and multiple pump options , soft starters and condition monitoring systems to ensure uninterrupted services. The system can meet the demands of diverse industries that include utility water supply, HVAC, fire fighting systems, water and waste water treatment, storm water, dewatering etc., in Multifamily Residential Buildings, Industrial Buildings, Office Buildings, Shopping mall, Theatre, Auditorium, Community hall, Healthcare Facilities, Golf Course, School, Hotels and Hospitality industry.





ECW SERIES

EN733 - END SUCTION PUMP

Application

- Utility water supply
- Back wash application in water treatment plant
- Fire water service
- HVAC system



Specifications	50Hz	60Hz
Flow	upto 600 m ³ /hr	upto 2641 GPM
Head	upto 160 m	upto 524 Feet
Outlet Size	upto 150 mm	upto 6" inch
Power	upto 200 kW	upto 268 hp
Speed	960/1450/2900 RPM	1800/3600 RPM
Max. Working Pressure	upto 16 bar	upto 16 bar
Liquid Temperature	upto 90°C	upto 194°F
Flange Standard	DIN	ANSI / DIN
Material of Construction (MOC)	Cast Iron & Bronze	Cast Iron & Bronze
Optional	Stainless steel, Duplex, Super Duplex & Alloy steels	Stainless steel, Duplex, Super Duplex & Alloy steels

CCW SERIES

CLOSE COUPLED PUMP

Application

- Utility water supply
- Fire water service
- HVAC System



Specifications	50Hz	60Hz
Flow	upto 550 m ³ /hr	upto 2641 GPM
Head	upto 95 m	upto 524 Feet
Outlet Size	upto 150 mm	upto 6" inch
Power	upto 45 kW	upto 60 hp
Speed	1450/2900 RPM	1800/3600 RPM
Max. Working Pressure	upto 16 bar	upto 16 bar
Liquid Temperature	upto 90°C	upto 194°F
Flange Standard	DIN	ANSI / DIN
Material of Construction (MOC)	Cast Iron & Bronze	Cast Iron & Bronze
Optional	Stainless steel, Duplex, Super Duplex & Alloy steels	Stainless steel, Duplex, Super Duplex & Alloy steels

SCW SERIES

HORIZONTAL SPLIT CASE PUMP

Application

- Utility water supply
- Fire water service
- HVAC system
- Pressure boosting
- Storm water
- Flood control



Specifications	50Hz	60Hz
Flow	upto 4200 m ³ /hr	upto 17611 GPM
Head	upto 170 m	upto 490 Feet
Outlet Size	upto 450 mm	upto 18" inch
Power	upto 1460 kW	upto 1206 hp
Speed	960/1450/2900 RPM	900/1100/1750 RPM
Max. Working Pressure	upto 16 bar	upto 16 bar
Liquid Temperature	upto 90°C	upto 194°F
Flange Standard	DIN / ANSI	DIN / ANSI
Material of Construction (MOC)	Cast Iron & Bronze	Cast Iron & Bronze
Optional	Stainless Steel, Duplex, Super Duplex & Alloy steels	Stainless Steel, Duplex, Super Duplex & Alloy steels

VS & VC SERIES

VERTICAL INLINE CLOSE COUPLED PUMP

Application

- Utility water supply
- Hot & Cold water supply
- Fire water service
- Pressure Boosting
- HVAC System



Specifications	50Hz
Flow	upto 503 m ³ /hr
Head	upto 96 m
Outlet Size	upto 200 mm
Power	upto 90 kW
Speed	1450/2900 RPM
Max. Working Pressure	upto 16 bar
Liquid Temperature	upto 90°C
Flange Standard	DIN
Material of Construction (MOC)	Cast Iron & Bronze

* Contact manufacturer for 60Hz requirement

ECP SERIES

END SUCTION PROCESS PUMP



Application

- Sludge transfer in STP plant
- Storm water
- Waste water handling in STP plant
- Dewatering

Specifications	50Hz	60Hz
Flow	upto 2500 m ³ /hr	upto 15850 GPM
Head	upto 100 m	upto 311 Feet
Outlet Size	upto 350 mm	upto 14" inch
Power	upto 315 kW	upto 420 hp
Speed	720/970/1450 RPM	900/1200/1800 RPM
Max. Solid Size	upto 95 mm	upto 3¾" inch
Max. Working Pressure	upto 16 bar	upto 16 bar
Liquid Temperature	upto 90°C	upto 356°F
Flange Standard	ANSI	ANSI
Material of Construction (MOC)	Cast Steel & Stainless Steel	Cast Steel & Stainless Steel
Optional	Duplex, Super Duplex & Alloy steels	Duplex, Super Duplex & Alloy steels

HMW SERIES

HORIZONTAL MULTISTAGE PUMP



Application

- High pressure application in RO plant
- Pressure boosting
- Fire fighting

Specifications	50Hz
Flow	upto 810 m ³ /hr
Head	upto 1110 m
Outlet Size	upto 300 mm
Power	upto 1300 kW
Speed	960/1450/2900 RPM
Max. Working Pressure	upto 30 bar
Liquid Temperature	upto 90°C
Flange Standard	DIN / ANSI
Material of Construction (MOC)	Cast Iron & Bronze
Optional	Stainless Steel, Duplex, Super Duplex & Alloy steels

* Contact manufacturer for 60Hz requirement

MV SERIES

MULTISTAGE VERTICAL INLINE PUMPS

Application

- Hot & Cold water supply
- High pressure application in RO plant
- Pressure boosting & Distribution
- Jockey application in fire fighting system

Specifications	50Hz	60Hz
Flow	upto 200 m ³ /hr	upto 450 GPM
Head	upto 320 m	upto 982 Feet
Outlet Size	upto 150 mm	upto 3" inch
Power	upto 110 KW	upto 60 hp
Speed	2900 RPM	3450 RPM
Max. Working Pressure	upto 32 bar	upto 32 bar
Liquid Temperature	upto 90°C, Optional - 120°C	upto 194°F, Optional - 392°F
Flange Standard	DIN	DIN / ANSI
Material of Construction (MOC)	Cast Iron,Stainless Steel	Cast Iron,Stainless Steel



WASTE WATER & DRAINAGE SOLUTIONS

Applications

- Various applications in Sewage treatment plant
- Drainage & Dewatering

Specifications	50Hz	60Hz
Model	GB / GA	GB / GA
Flow	upto 216 m ³ /h	upto 1080 GPM
Head	upto 65 m	upto 150 Feet
Outlet Size	upto 100 mm	upto 4" inch
Power	upto 50 kW	upto 50 hp
Speed	1450/2900 RPM	1750 / 3500 RPM
Max. Solid Size	upto 90 mm	upto 3½" inch
Liquid Temperature	upto 40°C	upto 104°F
Maximum immersion depth	upto 20 m	upto 65 Feet
Material of Construction (MOC)	CI with 0.3% Cu, Ni and Mo	CI with 0.3% Cu, Ni and Mo



Specifications	50Hz	60Hz
Model	GT	GT
Flow	upto 30 m³/h	upto 120 GPM
Head	upto 60 m	upto 70 Feet
Outlet Size	upto 50 mm	1½" inch
Power	upto 9.5 kW	upto 8 hp
Speed	2900 RPM	3500 RPM
Max. Solid Size	upto 7 mm	upto ¼" inch
Liquid Temperature	upto 40°C	upto 104°F
Maximum immersion depth	upto 20 m	upto 65 Feet
Material of Construction (MOC)	CI with 0.3% Cu, Ni and Mo	CI with 0.3% Cu, Ni and Mo



Specifications	50Hz	60Hz
Model	MC	MC
Flow	upto 504 m³/h	upto 1850 GPM
Head	upto 65 m	upto 140 Feet
Outlet Size	upto 150 mm	upto 6" inch
Power	upto 34 kW	upto 53 hp
Speed	1450/2900 RPM	1160 / 1750 RPM
Max. Solid Size	upto 100 mm	upto 4" inch
Liquid Temperature	upto 40°C	upto 104°F
Maximum immersion depth	upto 20 m	upto 65 Feet
Material of Construction (MOC)	CI with 0.3% Cu, Ni and Mo	CI with 0.3% Cu, Ni and Mo



Specifications	50Hz	60Hz
Model	KC	KC
Flow	upto 2520 m³/h	upto 9400 GPM
Head	upto 66 m	upto 300 Feet
Outlet Size	upto 400 mm	upto 12" inch
Power	upto 185 kW	upto 250 hp
Speed	720/960/1450 RPM	900 / 1160 / 1750 RPM
Max. Solid Size	upto 165 mm	upto 6" inch
Liquid Temperature	upto 40°C	upto 104°F
Maximum immersion depth	upto 20 m	upto 65 Feet
Material of Construction (MOC)	CI with 0.3% Cu, Ni and Mo	CI with 0.3% Cu, Ni and Mo

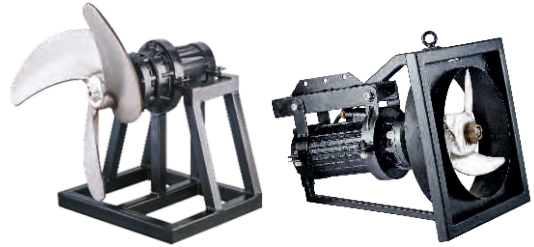


Specifications	50Hz
Model	MA
Flow	upto 36 m³/h
Head	upto 25 m
Outlet Size	upto 50 mm
Power	upto 2.6 kW
Speed	2900 RPM
Max. Solid Size	upto 40 mm
Liquid Temperature	upto 40°C
Maximum immersion depth	upto 20 m
Material of Construction (MOC)	CI with 0.3% Cu, Ni and Mo



* Contact manufacturer for 60Hz requirement

Specifications	50Hz
Model	MD / TP
Flow	upto 6702 m ³ /h
Head	upto 75 m
Outlet Size	NA
Power	upto 18.5 kW
Speed	200/250/960/1450 RPM
Max. Solid Size	NA
Liquid Temperature	upto 40°C
Maximum immersion depth	upto 20 m
Material of Construction (MOC)	CI with 0.3% Cu, Ni and Mo



* Contact manufacturer for 60Hz requirement

Specifications	50Hz
Model	AG
Flow	upto 1558 m ³ /h
Head	upto 22 m
Outlet Size	NA
Power	upto 22 kW
Speed	1450/2900 RPM
Max. Solid Size	NA
Liquid Temperature	upto 40°C
Maximum immersion depth	upto 20 m
Material of Construction (MOC)	CI with 0.3% Cu, Ni and Mo



* Contact manufacturer for 60Hz requirement

Specifications	50Hz
Model	SN
Flow	upto 216 m ³ /h
Head	upto 65 m
Outlet Size	upto 100 mm
Power	18 & 25 kW
Speed	960 RPM
Max. Solid Size	upto 10 mm
Liquid Temperature	upto 40°C
Maximum immersion depth	upto 20 m
Material of Construction (MOC)	CI with 0.3% Cu, Ni and Mo



* Contact manufacturer for 60Hz requirement

Specifications	50Hz
Model	DRV
Flow	upto 150 m ³ /h
Head	upto 42 m
Outlet Size	upto 100 mm
Power	upto 10 kW
Speed	2850 RPM
Max. Solid Size	upto 10 mm
Liquid Temperature	upto 40°C
Maximum immersion depth	upto 20 m
Material of Construction (MOC)	Aluminium and Hi-Chrome

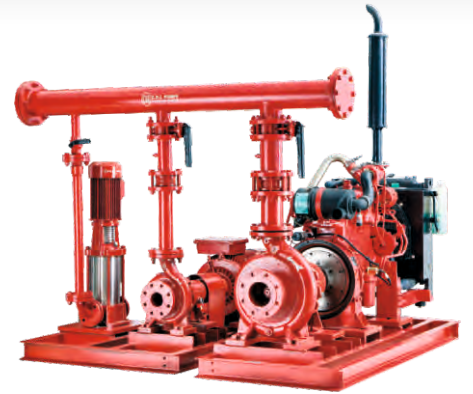


* Contact manufacturer for 60Hz requirement

FIRE FIGHTING SYSTEM

Applications

- Fire water service



Specifications	MV	ECW	SCW
Flow	upto 60 m ³ /hr	upto 273 m ³ /hr	upto 700 m ³ /hr
Head	upto 275 m	upto 88 m	upto 108 m
Outlet Size	upto 100 mm	upto 150 mm	upto 200 mm
Liquid Temperature	upto 90°C	upto 90°C	upto 90°C
Material of Construction (MOC)	CI & Bronze	CI & Bronze	CI & Bronze

HVAC SYSTEM

Applications

- Primary, Secondary & Condenser Pumps

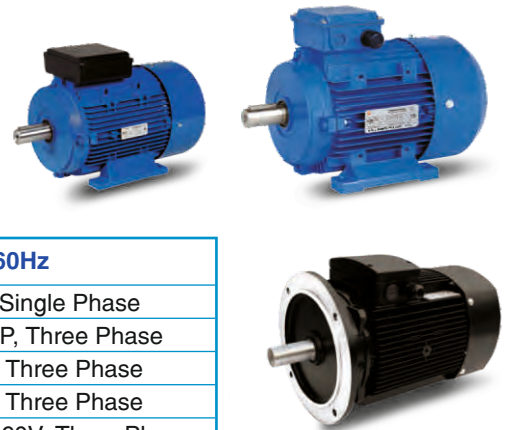


Specifications	ECW	CCW	SCW	VSVC	CT
Flow	upto 415 m ³ /hr	upto 338 m ³ /hr	upto 3300 m ³ /hr	upto 420 m ³ /hr	upto 246 m ³ /hr
Head	upto 90 m	upto 55 m	upto 108 m	upto 46 m	upto 95 m

ENERGY EFFICIENT MOTORS

Application

- To be coupled with pumps for various application



Specifications	50Hz	60Hz
Power Range (in KW)	0.37 to 2.2, Single Phase	0.5HP to 3HP, Single Phase
Power Range (Standard)	0.37 to 315 kW, Three Phase	0.5HP to 422HP, Three Phase
Power Range (IE2)	0.75 to 315 kW, Three Phase	1HP to 422HP, Three Phase
Power Range (IE3)	0.75 to 315 kW, Three Phase	1HP to 422HP, Three Phase
Rated Voltage	380/400/415V, Three Phase	230V / 380V /460V, Three Phase (Triple Voltage design upto 30HP)
	220/230V, Single Phase	220/230V, Single Phase
Pole	2/4/6 Pole	2/4/6 Pole
Frame Size	upto 355	upto 355
Class of Insualtion	Class - F	Class - F
Degree of Protection	IP 55	IP 55
Mounting Type	Foot / Flange / Foot cum flange / Face Mounted motors (B3, B5, B35, B14)	Foot / Flange / Foot cum flange / Face Mounted motors (B3, B5, B35, B14)

* HT and flame proof motors on request

CONTROLLERS & CONDITION MONITORING SYSTEMS

Product Range - 0.37 kW - 315 kW

- VFD Controllers with single & Multi pump options
- Soft starter
- Auto transformer starter
- Pressure boosting pump controller
- HVAC Controller
- Fire pump controller
- Sewage pump controller
- Customized controller
- Wireless condition monitoring system



VALVE RANGES

WAFER TYPE BUTTERFLY VALVE

Product Range	
Size Range	1 1/2" to 24"
Pressure Rating	PN10 / PN16
Type of Valve	Centric Disc Butterfly valve with Rubber Lined Body
Body Type	Single Piece, Short wafer or wafer lugged Extended Neck Body available
Seal Type	Integrally Bonded & Replaceable (EPDM, Nitrile, Viton, Hypalon)
Operation	Hand Lever, Gear Operation (Pneumatic & Electrical - Optional)

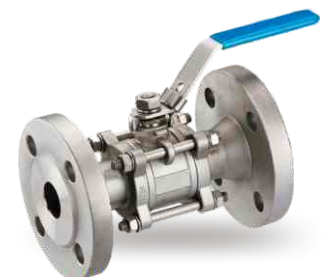
Standards	
Valve Design Standard	BS EN 593 / API 609 / IS 13095
Valve face to face	ISO 5752
Top flange drilling	ISO 5211
Valve inspection and testing	API 598 / IS 13095
Flange standard	ANSI 125 / ANSI 150 / BS 10 TAB D & E / IS 6392 NP 1.0 & 1.6 DIN 2501 – PN10 & PN16



FLOATING BALL VALVES 3 PIECE - CAST

Product Range	
Size	CI 1/4" to 8 & Forged 1/2" to 2"
Bore	Full Bore & Reduced Bore
End Connection	Flanged End / SW End / Threaded End
Rating	Class 150# to 800#
Operation	Hand Lever Operated, Pneumatic/Electrical (Optional)

Standards	
Valve Design standard	ISO 17292 / API 6 D
Flange standard	ASME B 16.5
Valve Face to Face	ASME B 16.10 / API 6 D
Testing Standard	EN 12266 / API 598
Top flange for actuator mounting	ISO 5211



FLOATING BALL VALVES 3 PIECE - FORGED

Product Range	
Size	DN10 - DN65
Bore	Full Bore & Reduced Bore
End Connection	SW / SCR
Rating	Class 800#
Operation (Optional)	Hand Lever Operated, Pneumatic/Electrical

Standards	
Valve Design standard	ISO 17292
Flange standard	
✓ Socket Weld ends	ASME B 16.11
✓ Screwed (BSP)	ISO 7-1
✓ Screwed (NPT)	ASME B 1.20.1
Valve Face to Face	Manufacturer standard
Testing Standard	EN 12266
Top flange for actuator mounting	ISO 5211



OTHER PRODUCT RANGES

PIPES



	uPVC plumbing pipes	cPVC plumbing pipes	SWR Pipes	Pressure Pipes
Pipe sizes in mm	25 - 125	15 - 100	75A/B - 160A/B	20 - 400

	HDPE Pipes	Column Pipes	Well casing Pipes
Pipe sizes in mm	20 - 110	25 - 150	40 - 300

CABLES



Available sizes in Sq.mm	1.5, 2.5, 4, 6, 10, 16, 25, 35, 50, 70, 95, 120, 150 (3 core and 4 core) - 1100V
Available sizes in AWG	14, 12, 10, 8, 6, 4, 2, 1.1/0.2/0.3/0.4/0& 255MCM (3 core and 4 core) - 600V
Armoured available sizes in Sq.mm	1.5, 2.5, 4, 6, 10, 16, 25, 35 (3 core and 4 core) - 1100V

HOUSING WIRES



Available sizes in Sq.mm	0.5, 0.75, 1, 1.5, 2.5, 4, 6, 10, 16
--------------------------	--------------------------------------

AGRICULTURE & RESIDENTIAL PRODUCTS

Product Range		
	Surface pumps	Bore hole pumps
Power	0.37 - 30 kW	0.37 - 300 kW
Head	upto 141 m	upto 850 m
Flow	upto 210 m ³ /h	upto 810 m ³ /h

Product Range		
	Surface pumps	Bore hole pumps
Power	upto 50 HP	upto 400 HP
Head	upto 265 ft	upto 3366 ft
Flow	upto 790 gpm	upto 3698 gpm



NOTES

A series of horizontal dotted lines for writing notes, starting from the 'NOTES' header and extending down the page.

NOTES

A series of horizontal dotted lines for writing notes, starting from the 'NOTES' header and extending down the page.

NOTES

A series of horizontal dotted lines for writing notes, starting from the 'NOTES' header and extending down the page.

C.R.I. PUMPS (PVT) LIMITED

(International Division)

7/46-1, Keeranatham Road, Saravanampatty, Coimbatore - 641 035. **India.**

Phone : +91-422-7117310, 7117312. Fax : +91-422-7117300, e-mail : cri@crifluidsystems.com website : www.crifluidsystems.com

BOMBAS C.R.I. ESPAÑA, S.L.

Poligono Industriail El.Bony Calle 31, No. 137, 46470
Catarroja (Valencia) **Spain.**

Tel : +34-96 1842 974, Fax : +34-96 1842 977

e-mail : admin-es@crifluidsystems.com website : www.crifluidsystems.com

BOMBAS C.R.I. ESPAÑA S.L. UNIPERSONAL

Via del Progresso 9/13

20090 Pieve Emanuele (MI), Italy.

e-mail : admin-it@crifluidsystems.com website : www.crifluidsystems.com

C.R.I. BOMBAS HIDRÁULICAS LTDA

Av. Rodrigo Fernando Grillo, 457, Jd. Manacas,
CEP - 14.801-534, Araraquara - SP, **Brasil.**

Fone : +55-16-3331 1099, Fax : +55-16-3331 5344

e-mail : cri@cribombas.com.br website : www.crifluidsystems.com

Filial : Jabotão dos Guararapes-PE, Brasil.

Fone : (81) 3093-9620, Fax : (81) 3093-9600.

C.R.I. PUMPS S.A. (PTY) LIMITED

P.O. Box 6292, Halfway House, Midrand - 1685,
Johannesburg, **South Africa.**

Tel : +27-11-8058631 / 32, Fax : +27-11-8058630

e-mail : cri-za@crifluidsystems.com website : www.crifluidsystems.com

C.R.I. POMPA SANAYİ VE TİCARET LİMİTED ŞİRKETİ

10032 Sk. No:12 A.O.S.B. 35620 Çiğli-İzmir-Türkiye.

Tel : +90-232-328-328 22 99, Fax : +90-232-328 23 33

e-mail : cri@cripompa.com website : www.crifluidsystems.com

PT. CRI FLUID SYSTEMS

Kawasan Industri dan Pergudangan Marunda Center

Blok B No: 23 Jalan Marunda Makmur, Segaramakmur, Tarumajaya,

Kab. Bekasi, Jawa Barat 17211, **Indonesia**, Ph : 021-8899 7558

Email : sales.id@crifluidsystems.com Website : www.crifluidsystems.com

C.R.I. FLUID SYSTEMS USA LLC

4655 Wright Road, Ste. 140, Stafford, TX 77477, USA.

Tel : 832-430-4660 Email : sales.us@crifluidsystems.com

Website : www.crifluidsystems.com

C.R.I. FLUID SYSTEMS MEXICO S. DE R.L. DE C.V

Ciudad de Mexico, Email : sales.mx@crifluidsystems.com, Website : www.crigroups.us

C.R.I. PUMPS (FZC)

P.O. Box 7988, A4-12 SAIF-Zone, **Sharjah**, U.A.E.

Tel : +971-6-5573041 (3 Lines), Fax : +971-6-5573042

e-mail : cri-uae@crifluidsystems.com website : www.crifluidsystems.com

C.R.I. FLUID SYSTEMS INC.,

Polyland Industrial Subdivision, Warehouse #3, Block 4,

Kendex St., Bo. Iba, Meycauyan, Bulacan. **Philippines**. Zip-3017.

Phone : +63 44 762 8887 / +63 44 802 6199, Fax : +63 44 762 8883.

e-mail : sales.ph@crifluidsystems.com

Website : www.crifluidsystems.com

C.R.I. FLUID SYSTEMS (BD) LTD.,

Holding No. 217, Madrasa Road, Jadurchar, Hemayetpur,

Savar, Dhaka-1340, **Bangladesh**

Website : www.crifluidsystems.com

C.R.I. PUMPS (Shanghai) Co., Ltd.

Room 510, No 1855 Qixin Road,

Minhang District, **Shanghai** - 201101. China.

Tel : +86-21-54405082, Fax : +86-21-54405083

e-mail : cri@bombascri.com.cn

website : www.crifluidsystems.com

SUZHOU C.R.I. PUMPS CO., LTD.

No.198, Shexi Road, Beishe Community, Lili Town,

Wujiang District, Suzhou City,

Jiangsu Province, China.

Tel: +86-512-63433668 | Fax : +86-512-634 33667,

e-mail : cri@crisuzhou.com.cn | website : www.crifluidsystems.com



<https://www.linkedin.com/company/cri-fluid-systems>



<https://www.facebook.com/crifluidsystemsglobal/?ti=as>



https://www.instagram.com/cri_fluidsystems/

