



**C.R.I. PUMPS**  
Pumping trust. Worldwide.

# SILVER LINE SERIES



## Submersible Pumps

C.R.I. Submersible Pumps are the products of the expertise gained from over five decades of experience, endurance and workmanship. These products are engineered to perfection with utmost care and stringent quality control at all stages to ensure a trouble free service.

Description : C.R.I. 4" Silverline series submersible pumps are built with thermoplastic impellers, diffusers and inbuilt check valve. All vital components of these pumps are made of corrosive resistance thermoplastic and the shaft is of SS 304/431. Pumps are multi stage centrifugal type. The optimal design of impellers and diffusers enables the best possible hydraulic efficiency.

The pump is firmly coupled to a submersible electric motor which operates submerged beneath the surface of water. Built in check valve prevents back flow and reduces the risk of water hammering. All mounting dimensions of 4" pumps & motors are in accordance with NEMA standard.

Features : | Residential | Irrigation | Civil Water Supply | Fountains | Industrial and Rural Water Supply  
| Fire Fighting | Pressure Boosting Units | Gardens | Sprinkler Systems



## Pumped Liquids

Clean, Thin, Non-aggressive, Non explosive, Clear, Cold, Fresh Water without abrasives, Solid particles or fibre having the following characteristics

a)	<b>Temperature</b>	Max : 33°C
b)	<b>Permissible amount of sand</b>	100 g/m <sup>3</sup> = 2 to 7m <sup>3</sup> /h 50 g/m <sup>3</sup> = 1E & 8 to 18m <sup>3</sup> /h
c)	<b>Chlorine ion density</b>	Max : 500 ppm
d)	<b>Allowable solids</b>	Max : 3000 ppm
e)	<b>Specific gravity</b>	Max:1.004
f)	<b>Hardness (Drinking Water)</b>	Max : 300
g)	<b>Viscosity</b>	Max : 1.75 x10 <sup>6</sup> m <sup>2</sup> /sec
h)	<b>Turbidity</b>	Max : 50ppm silica scale
i)	<b>pH</b>	6.5 to 8.5

PUMP OPERATING LIMITATIONS		
<b>NOMINAL DIAMETER</b>		4"
<b>POWER RANGE</b>		0.5 - 10 HP
<b>SPEED</b>		3450 rpm
<b>DISCHARGE RANGE</b>	m <sup>3</sup> /h	0.75 - 26
	l/s	0.22 - 7.2
<b>TOTAL HEAD RANGE</b>	m	37 - 427
	ft	121 - 1401
<b>OUTLET SIZE IN INCHES</b>		1¼", 1½" & 2" BSP

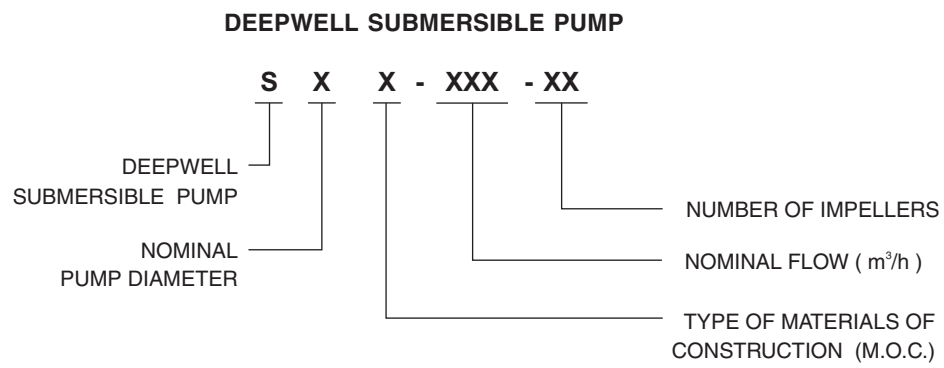
Maximum Temperature of Pumped Liquid

Motor	Minimum cooling flow along the motor	Vertical Installation	Horizontal Installation minimum 30° angle
4"	0.15 m/s	33 °C	33 °C

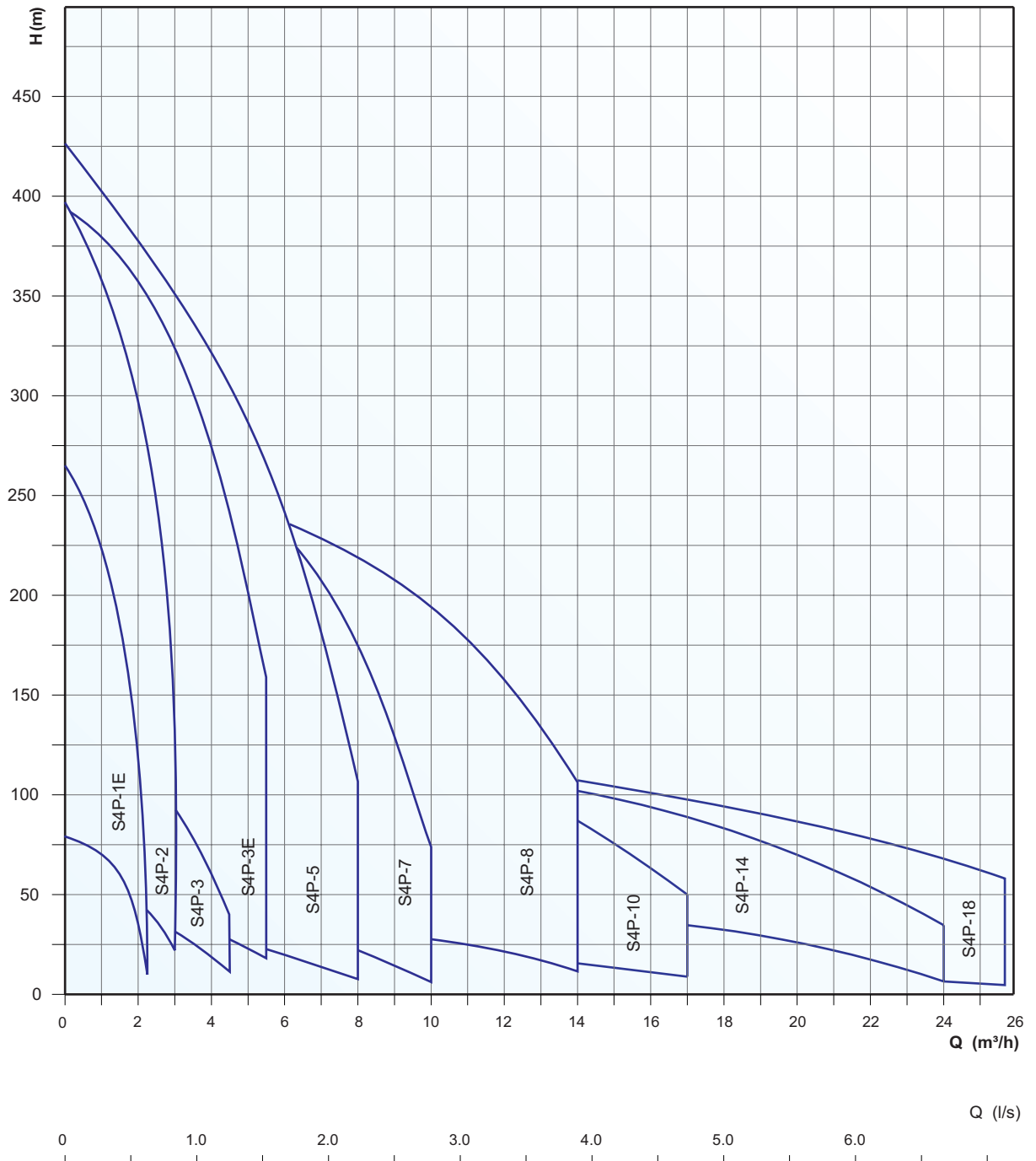
Maximum Operating Pressure	
4" Submersible pump	3.7 Mpa (37 bar)



## MODEL IDENTIFICATION CODE



## Group Performance Curves - 4"





## Material of Construction

PART NAME	PART No.	NOMINAL DIA. 4"	
		TYPE - P	TYPE - V
CHECK VALVE HOUSING	21.00	S.S - 304	Nylon-6 (Polyamide)
CHECK VALVE	21.06	DELRIN	DELRIN
CHECK VALVE SEAT	21.01	NBR	NBR
OUTER SHELL	21.04	S.S - 304	S.S - 304
IMPELLER	19.00	NORYL* / DELTRIN/ LEXAN**	NORYL* / DELTRIN
DIFFUSER CHAMBER	18.03	NORYL* / LEXAN**	LEXAN**
STOP RING	13.3	HYLEM	S.S - 304
INTERMEDIATE BEARING (SLEEVE / BUSH)	12.02	S.S. - 304 / NBR BRONZE	S.S - 304 / NBR
SUCTION INTER CONNECTOR	17.00	S.S. - 304	Nylon-6 (Polyamide)
INLET SCREEN	14.03	S.S - 304	S.S - 304
PUMP SHAFT HEXAGONAL	22.00	S.S - 431	S.S - 304
CABLE GUARD	22.01	S.S - 304	S.S - 304
COUPLING SPLINES	17.04	S.S - 329	S.S - 329

**Note :** Type - V is available only for specific models, with 1¼" outlet size.

DELTRIN is Registered Trade Mark of Dupont.

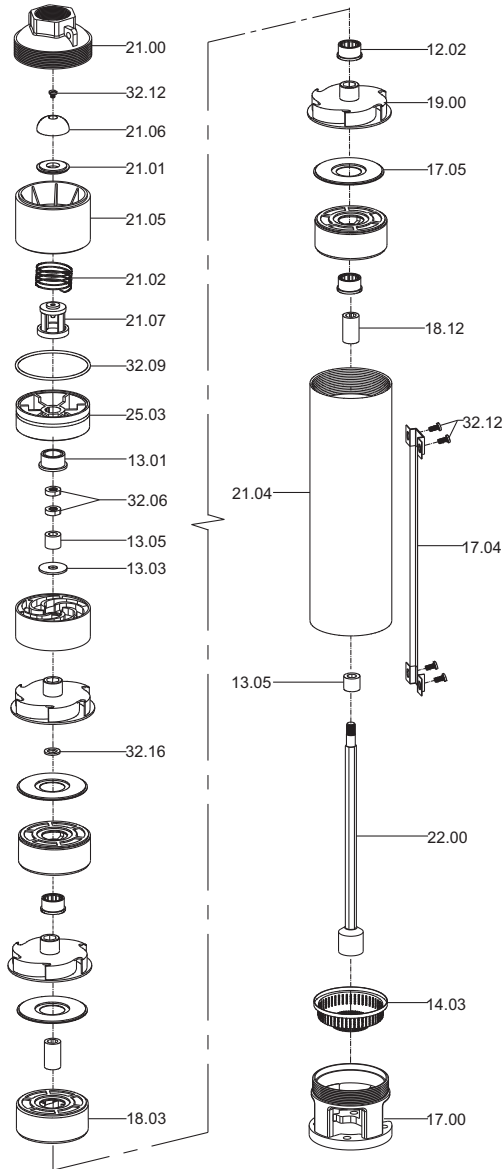
\*NORYL and \*\*LEXAN are Registered Trade Mark of G.E Plastics.

In view of continuous developments, the information / descriptions / specifications / illustrations are subject to change without notice.

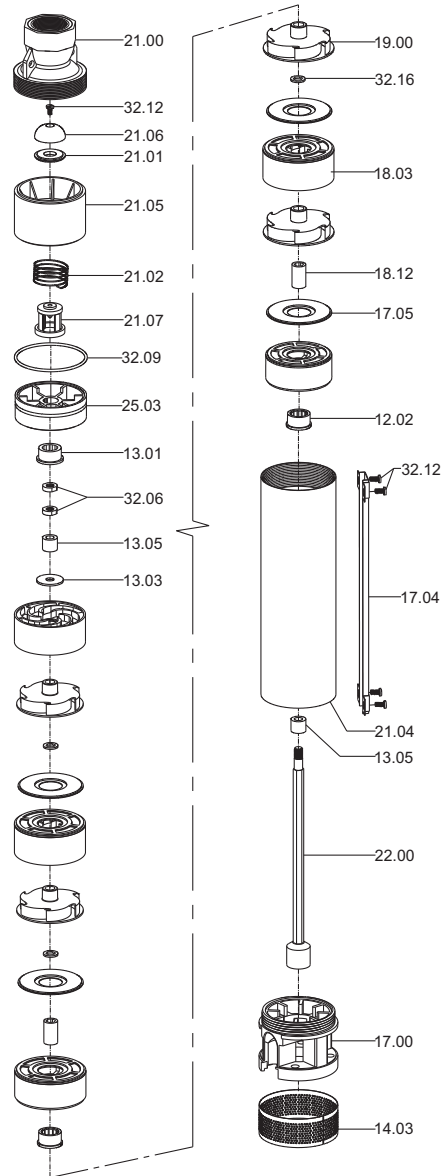


# Exploded View

**S4P (1-5m<sup>3</sup>/h)**



**S4V (1-5m<sup>3</sup>/h)**

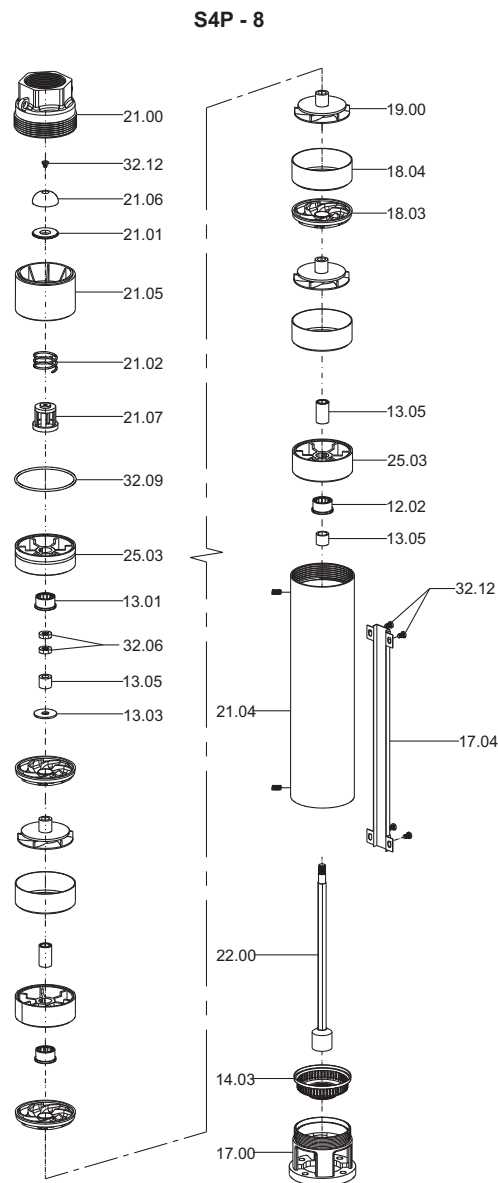


Part No.	Part Name
12.02	Bush-Diffuser Chamber
13.01	Bush - CT Pad
13.03	Upthrust Washer / Stop Ring
13.05	Sleeve
14.03	Inlet Screen
17.00	Suction Inter-Connector
17.04	Cable Guard
17.05	Diffuser Plate

Part No.	Part Name
18.03	Diffuser Chamber
18.12	Spacer Sleeve
19.00	Impeller
21.00	Check Valve Housing
21.01	Check Valve Seat
21.02	Check Valve Spring
21.04	Outer Shell
21.05	Check Valve Bracket

Part No.	Part Name
21.06	Check Valve Disc
21.07	Check valve
22.00	Pump Shaft with Coupling
25.03	Chamber-intermediate Bracket
32.06	Lock Nut
32.09	O-Ring
32.12	Screw
32.16	Washer

# Exploded View



Part No.	Part Name
12.02	Bush-Diffuser Chamber
13.01	Bush - CT Pad
13.03	upthrust Washer / Stop Ring
13.05	Spacer Sleeve
14.03	Inlet Screen
17.00	Suction Inter-connector
17.04	Cable Guard
18.03	Diffuser

Part No.	Part Name
18.04	Chamber
19.00	Impeller
21.00	Check Valve Housing
21.01	Check Valve Seat
21.02	Check Valve Spring
21.04	Outer Shell
21.05	Check Valve Bracket
21.06	Check Valve Disc

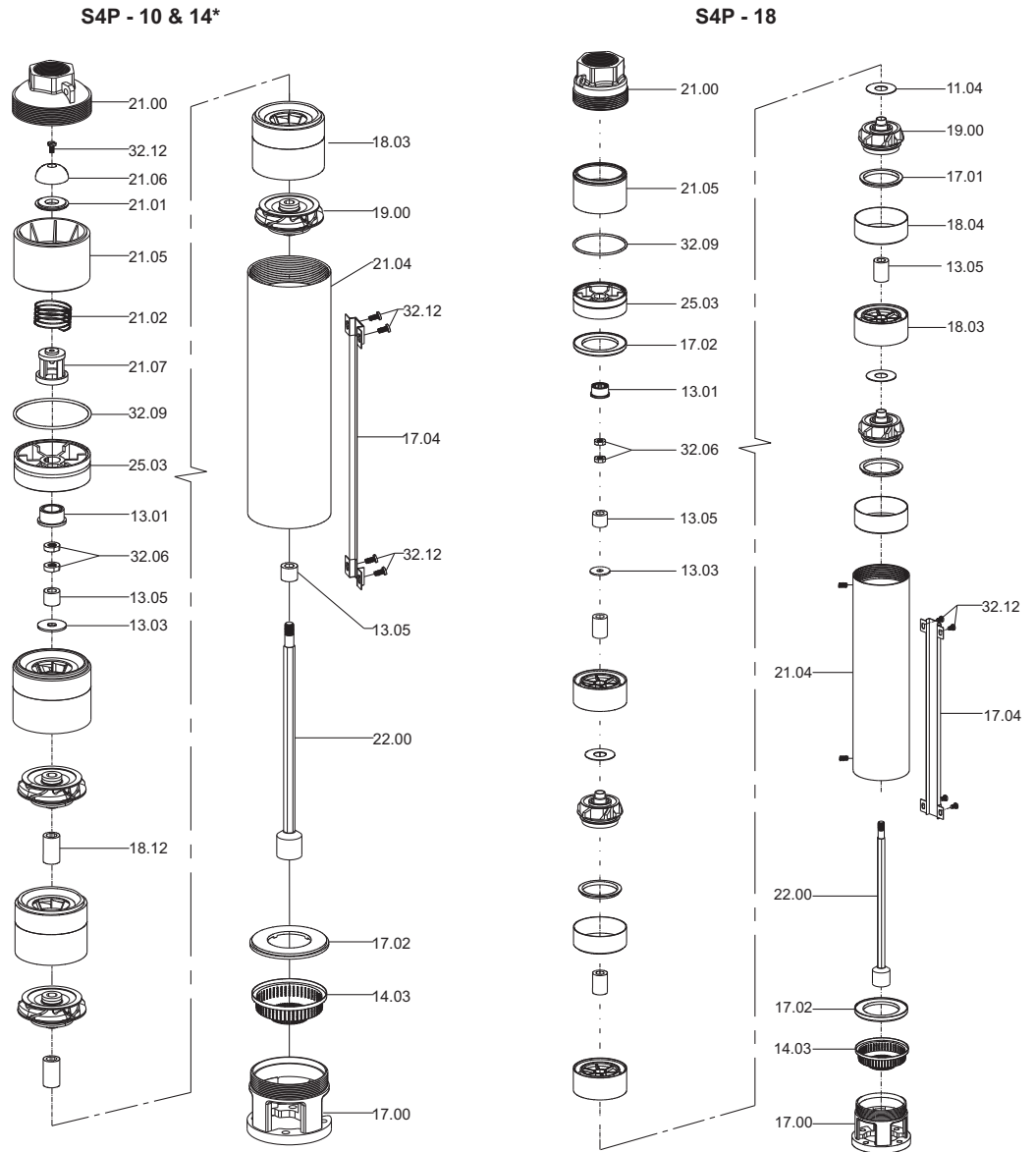
Part No.	Part Name
21.07	Check Valve
22.00	Pump Shaft with Coupling
25.03	Chamber-Intermediate bracket
32.06	Lock Nut
32.09	O-Ring
32.12	Screw
32.16	Washer

In view of continuous developments, the information / descriptions / specifications / illustrations are subject to change without notice.





# Exploded View



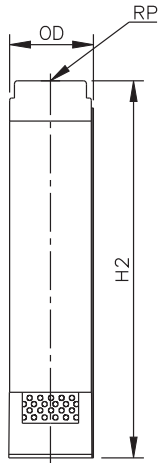
Part No.	Part Name
12.02	Bush-Diffuser Chamber
13.01	Bush - CT Pad
13.03	Upthrust Washer / Stop Ring
13.05	Sleeve
14.03	Inlet Screen
17.00	Suction Inter-Connector
17.02	Suction Inter-Connector plate
17.04	Cable Guard
11.04	Thrust Pad

Part No.	Part Name
18.03	Diffuser Chamber
17.01	Wear ring / Seal
18.12	Spacer Sleeve
19.00	Impeller
21.00	Check Valve Housing
21.01	Check Valve Seat
21.02	Check Valve Spring
21.04	Outer Shell
21.05	Check Valve Bracket

Part No.	Part Name
21.06	Check Valve Disc
18.04	Chamber
21.07	Check Valve
22.00	Pump Shaft with Coupling
25.03	Bush Bracket
32.06	Lock Nut
32.09	O-Ring
32.12	Screw
32.16	Washer

In view of continuous developments, the information / descriptions / specifications / illustrations are subject to change without notice.

\* For 14m<sup>3</sup>/h pumps internal NRV is not provided.

**NOMINAL DIAMETER : 4"**
**NOMINAL FLOW - 1.5 m<sup>3</sup>/h**
**OUTLET SIZE : 1 1/4"**
**DIMENSIONS & WEIGHT**


PUMP MODEL	REQUIRED MOTOR POWER		DIMENSIONS (mm)			APPROX NETT. WEIGHT (kg)
	kW	HP	OD	RP	H2	
S4V-1E-08	0.37	0.5	98	32	413	2.45
S4V-1E-12	0.55	0.75	98	32	487	3.11
S4V-1E-14	0.75	1	98	32	555	3.65
S4V-1E-17	1.1	1.5	98	32	674	4.50
S4P-1E-20	1.1	1.5	98	32	646	7.16
S4P-1E-27	1.5	2	98	32	807	9.12
S4P-1E-29	2.2	3	98	32	867	9.80

PUMP MODEL	MOTOR HP	I / s	0	0.20	0.27	0.34	0.41	0.48	0.55	0.62
		m <sup>3</sup> /h	0	0.75	1	1.25	1.5	1.75	2	2.25
S4V-1E-08	0.5	TOTAL MANOMETRIC HEAD IN METERS - (COLUMN WATER)	78	72	70	65	55	42	27	10
S4V-1E-12	0.75		118	110	106	97	84	65	43	18
S4V-1E-14	1		136	127	121	111	95	74	50	25
S4V-1E-17	1.5		170	157	147	134	118	99	79	50
S4P-1E-20	1.5		201	183	172	157	136	109	75	38
S4P-1E-27	2		265	239	223	203	179	146	107	62
S4P-1E-29	3		284	258	243	223	200	170	135	93

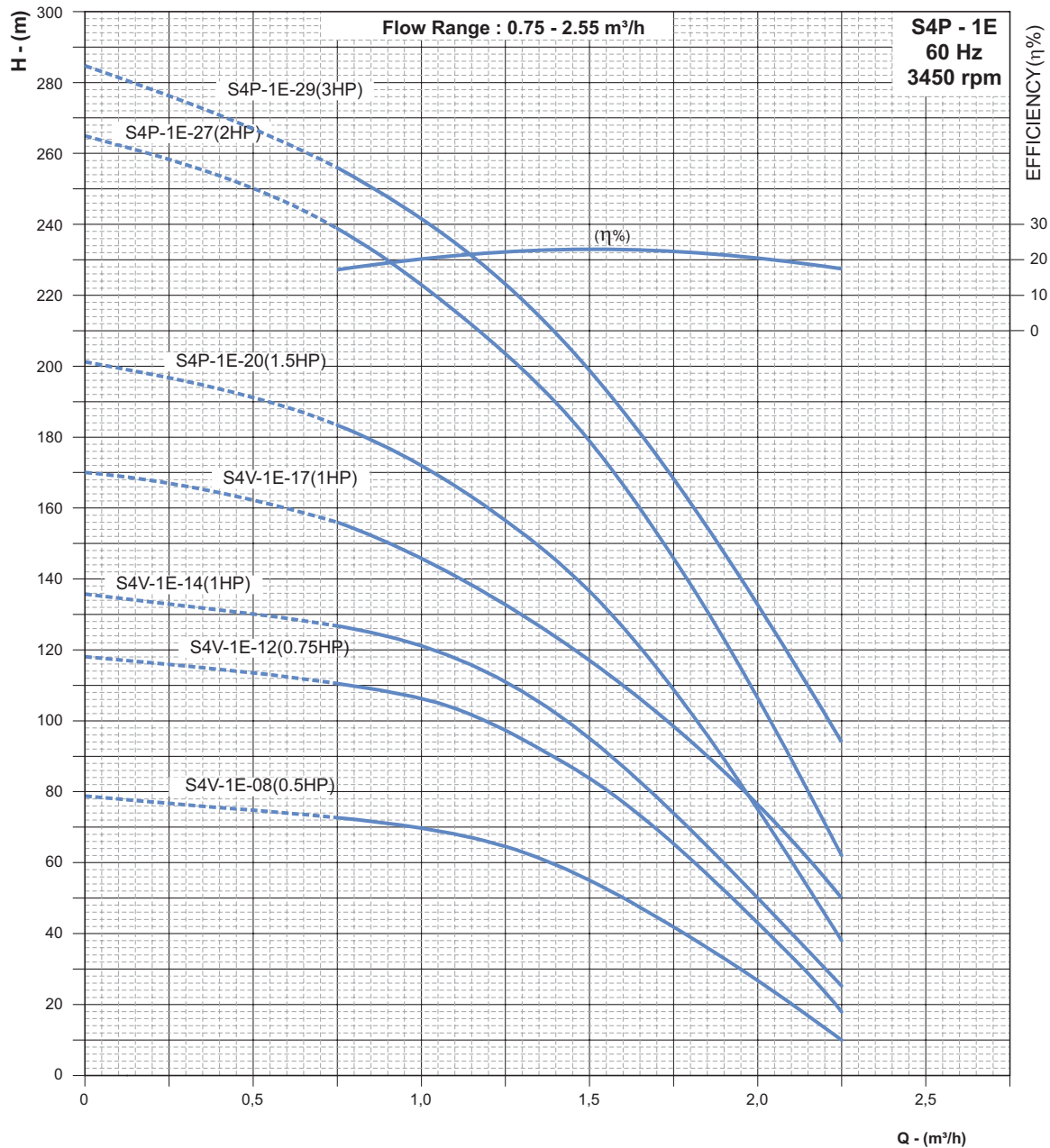


NOMINAL DIAMETER : 4"

NOMINAL FLOW - 1.5 m<sup>3</sup>/h

OUTLET SIZE : 1¼"

### PERFORMANCE CURVES



Refer General Information for performance curve conditions and for other details.  
Curve tolerance according to ISO : 9906, Grade 3B.

In view of continuous developments, the information / descriptions / specifications / illustrations are subject to change without notice.

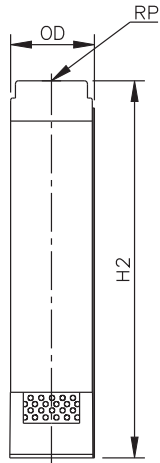


**NOMINAL DIAMETER : 4"**

**NOMINAL FLOW - 2 m<sup>3</sup>/h**

**OUTLET SIZE : 1¼"**

**DIMENSIONS & WEIGHT**



PUMP MODEL	REQUIRED MOTOR POWER		DIMENSIONS (mm)			APPROX NETT. WEIGHT (kg)
	KW	HP	OD	RP	H2	
S4V-2-06	0.37	0.5	98	32	396	2.32
S4V-2-09	0.55	0.75	98	32	462	2.97
S4V-2-13	0.75	1	98	32	550	3.53
S4V-2-17	1.1	1.5	98	32	719	4.62
S4P-2-19	1.1	1.5	98	32	691	7.48
S4P-2-25	1.5	2	98	32	853	8.78
S4P-2-31	2.2	3	98	32	985	9.75
S4P-2-36	2.2	3	98	32	1095	11.37
S4P-2-40	3	4	98	32	1183	12.67

PUMP MODEL	MOTOR HP	I / s	0	0.27	0.41	0.48	0.55	0.62	0.69	0.83
		m <sup>3</sup> /h	0	1	1,5	1.75	2	2.25	2.5	3
S4V-2-06	0.5	TOTAL MANOMETRIC HEAD IN METERS - (COLUMN WATER)	61	55	52	49	46	42	36	22
S4V-2-09	0.75		92	85	80	76	72	64	56	35
S4V-2-13	1		132	119	112	106	97	86	73	44
S4V-2-17	1.5		168	145	127	117	107	95	82	52
S4P-2-19	1.5		178	157	142	132	120	106	89	54
S4P-2-25	2		253	236	220	204	189	170	147	89
S4P-2-31	3		310	292	270	253	235	212	183	108
S4P-2-36	3		360	340	314	296	274	249	217	128
S4P-2-40	4		397	377	348	338	305	277	240	142

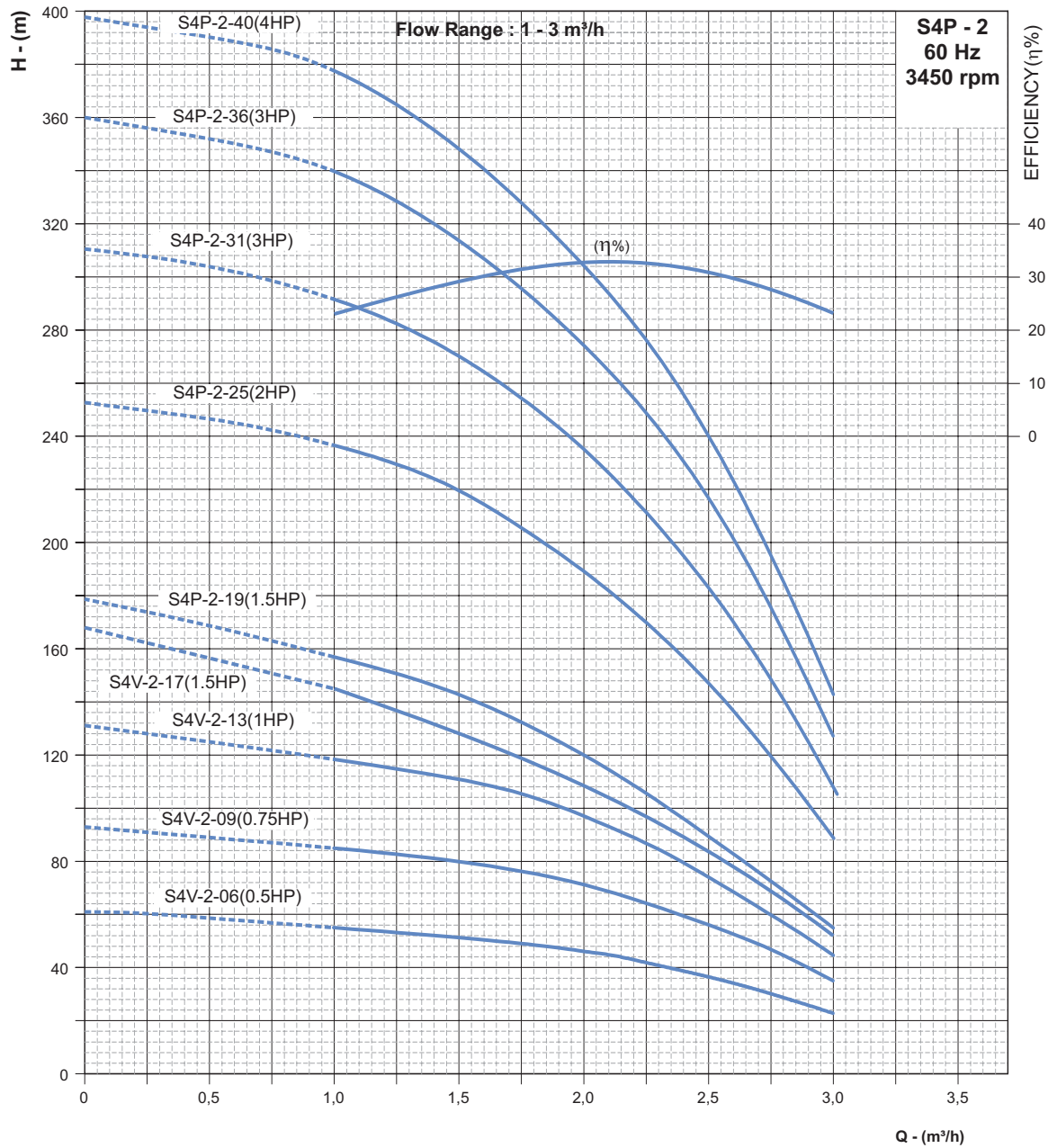


NOMINAL DIAMETER : 4"

NOMINAL FLOW - 2 m<sup>3</sup>/h

OUTLET SIZE : 1 1/4"

**PERFORMANCE CURVES**



Refer General Information for performance curve conditions and for other details.  
Curve tolerance according to ISO : 9906, Grade 3B.

In view of continuous developments, the information / descriptions / specifications / illustrations are subject to change without notice.

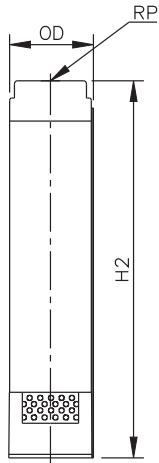


**NOMINAL DIAMETER : 4"**

**NOMINAL FLOW - 3 m<sup>3</sup>/h**

**OUTLET SIZE : 1 1/4"**

**DIMENSIONS & WEIGHT**



PUMP MODEL	REQUIRED MOTOR POWER		DIMENSIONS (mm)			APPROX NETT. WEIGHT (kg)
	kW	HP	OD	RP	H2	
S4V-3-04	0.37	0.5	98	32	355	1.65
S4V-3-06	0.55	0.75	98	32	402	2.34
S4V-3-07	0.75	1	98	32	425	2.70
S4V-3-11	1.1	1.5	98	32	518	2.98

PUMP MODEL	MOTOR HP	TOTAL MANOMETRIC HEAD IN METERS - (COLUMN WATER)	l / s	0	0.41	0.55	0.62	0.83	0.97	1.11	1.25
			m <sup>3</sup> /h	0	1.5	2	2.5	3	3.5	4	4.5
S4V-3-04	0.5			48	42	40	37	33	26	19	11
S4V-3-06	0.75		74	65	61	57	50	41	31	19	
S4V-3-07	1		84	76	72	67	60	49	37	24	
S4V-3-11	1.5		142	123	115	105	93	78	60	40	

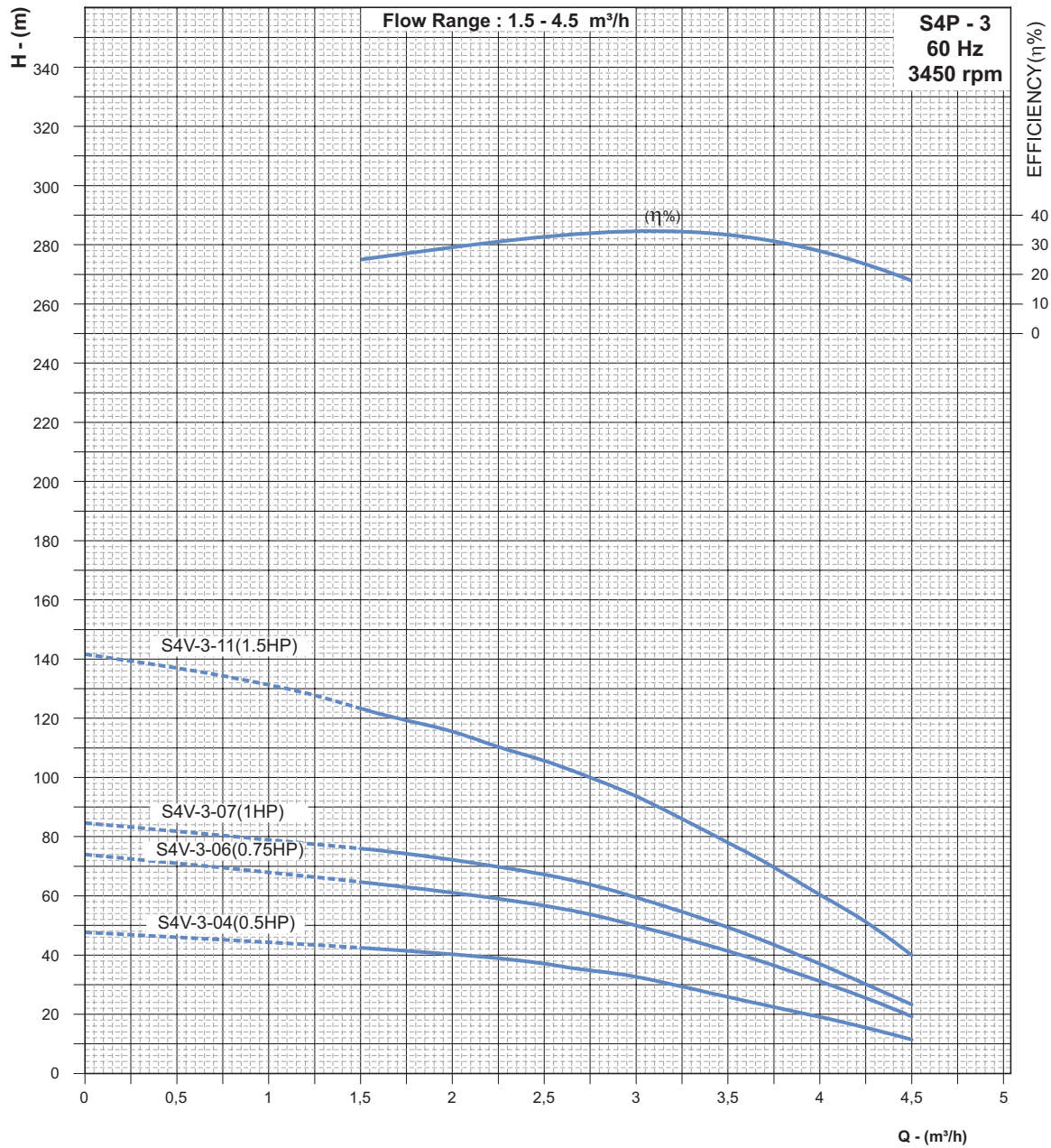


NOMINAL DIAMETER : 4"

NOMINAL FLOW - 3 m<sup>3</sup>/h

OUTLET SIZE : 1¼"

**PERFORMANCE CURVES**



Refer General Information for performance curve conditions and for other details.  
Curve tolerance according to ISO : 9906, Grade 3B.

In view of continuous developments, the information / descriptions / specifications / illustrations are subject to change without notice.

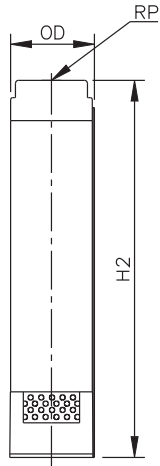


**NOMINAL DIAMETER : 4"**

**NOMINAL FLOW - 3.5 m<sup>3</sup>/h**

**OUTLET SIZE : 1 1/4"**

**DIMENSIONS & WEIGHT**



PUMP MODEL	REQUIRED MOTOR POWER		DIMENSIONS (mm)			APPROX NETT. WEIGHT (kg)
	kW	HP	OD	RP	H2	
S4V-3E-04	0.37	0.5	98	32	371	2.02
S4V-3E-05	0.55	0.75	98	32	398	2.24
S4V-3E-06	0.75	1	98	32	425	2.45
S4V-3E-08	1.1	1.5	98	32	567	3.26
S4V-3E-10	1.1	1.5	98	32	533	2.95
S4V-3E-12	1.5	2	98	32	640	3.54
S4V-3E-14	1.5	2	98	32	649	4.14
S4P-3E-18	2.2	3	98	32	757	7.47
S4P-3E-20	2.2	3	98	32	811	7.95
S4P-3E-24	3	4	98	32	973	9.54
S4P-3E-25	3	4	98	32	975	8.64
S4P-3E-26	3	4	98	32	1014	8.94
S4P-3E-28	3.7	5	98	32	1056	10.52
S4P-3E-30	3.7	5	98	32	1110	10.95
S4P-3E-34	4.5	6	98	32	1217	11.82

PUMP MODEL	MOTOR HP	I / s	0	0.55	0.83	0.97	1.11	1.25	1.39	1.52
		m <sup>3</sup> /h	0	2	3	3.5	4	4.5	5	5.5
S4V-3E-04	0.5	TOTAL MANOMETRIC HEAD IN METERS - (COLUMN WATER)	47	42	38	34	32	27	23	18
S4V-3E-05	0.75		60	52	48	44	40	34	28	22
S4V-3E-06	1		69	62	57	52	46	40	34	25
S4V-3E-08	1.5		90	84	75	68	62	50	44	35
S4V-3E-10	1.5		117	106	98	71	82	70	58	43
S4V-3E-12	2		136	126	112	102	92	85	66	51
S4V-3E-14	2		163	149	136	128	115	90	82	63
S4P-3E-18	3		208	190	175	163	146	118	103	70
S4P-3E-20	3		233	213	196	180	163	143	120	83
S4P-3E-24	4		268	240	209	192	172	152	128	91
S4P-3E-25	4		284	254	224	206	184	164	136	99
S4P-3E-26	4		293	268	243	226	205	178	150	113
S4P-3E-28	5		323	290	264	246	222	193	160	123
S4P-3E-30	5		340	308	280	261	238	206	173	135
S4P-3E-34	6		394	356	325	300	270	237	200	159

In view of continuous developments, the information / descriptions / specifications / illustrations are subject to change without notice.



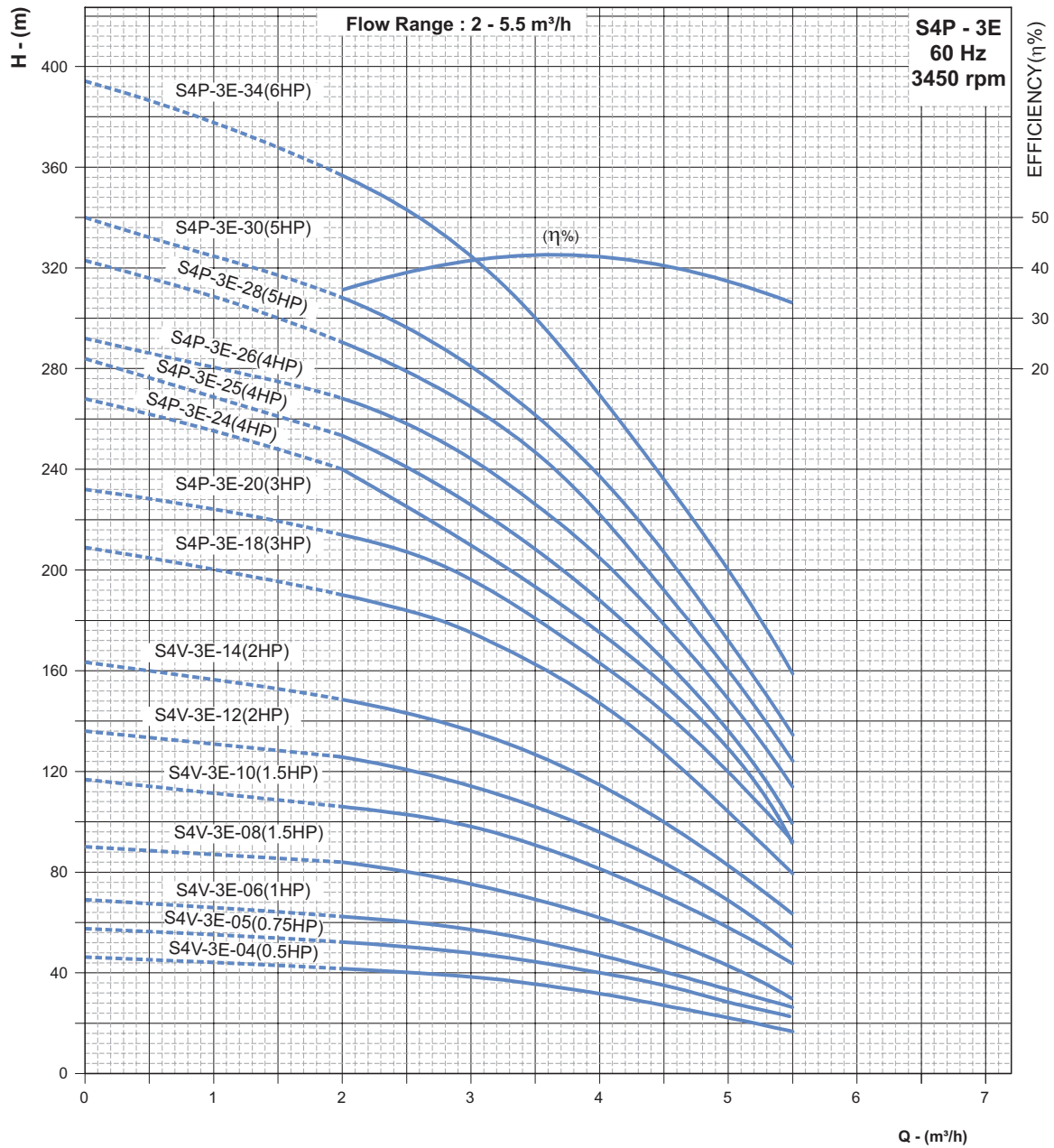


NOMINAL DIAMETER : 4"

NOMINAL FLOW - 3.5 m<sup>3</sup>/h

OUTLET SIZE : 1 1/4"

### PERFORMANCE CURVES



Refer General Information for performance curve conditions and for other details.  
Curve tolerance according to ISO : 9906, Grade 3B.

In view of continuous developments, the information / descriptions / specifications / illustrations are subject to change without notice.

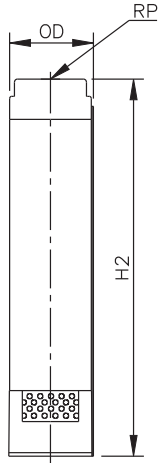


**NOMINAL DIAMETER : 4"**

**NOMINAL FLOW - 5 m<sup>3</sup>/h**

**OUTLET SIZE : 1¼"/1½"**

**DIMENSIONS & WEIGHT**



PUMP MODEL	REQUIRED MOTOR POWER		DIMENSIONS (mm)			APPROX NETT. WEIGHT (kg)
	KW	HP	OD	RP	H2	
S4V-5-03	0.37	0.5	98	32	349	1.60
S4V-5-04	0.55	0.75	98	32	378	1.95
S4V-5-05	0.75	1	98	32	407	2.18
S4V-5-08	1.1	1.5	98	32	494	2.88
S4V-5-11	1.5	2	98	40	560	4.91
S4P-5-15	2.2	3	98	40	706	6.65
S4P-5-20	3	4	98	40	851	8.28
S4P-5-24	3.7	5	98	40	967	9.51
S4P-5-28	4.5	6	98	40	1113	11.35
S4P-5-35	5.5	7.5	98	40	1316	14.56

PUMP MODEL	MOTOR HP	I / s	0	0.83	1.11	1.39	1.67	1.94	2.08	2.22
		m <sup>3</sup> /h	0	3	4	5	6	7	7.5	8
S4V-5-03	0.5	TOTAL MANOMETRIC HEAD IN METERS - (COLUMN WATER)	37	32	30	28	20	14	10	8
S4V-5-04	0.75		49	44	40	35	28	20	14	9
S4V-5-05	1		62	56	51	44	36	22	19	12
S4V-5-08	1.5		100	90	84	72	56	38	28	18
S4V-5-11	2		138	124	114	100	80	56	43	32
S4P-5-15	3		187	168	155	135	109	66	58	37
S4P-5-20	4		250	222	202	177	142	100	77	52
S4P-5-24	5		300	256	234	205	170	125	97	70
S4P-5-28	6		348	302	269	239	187	143	115	85
S4P-5-35	7.5		427	361	321	303	244	180	143	107

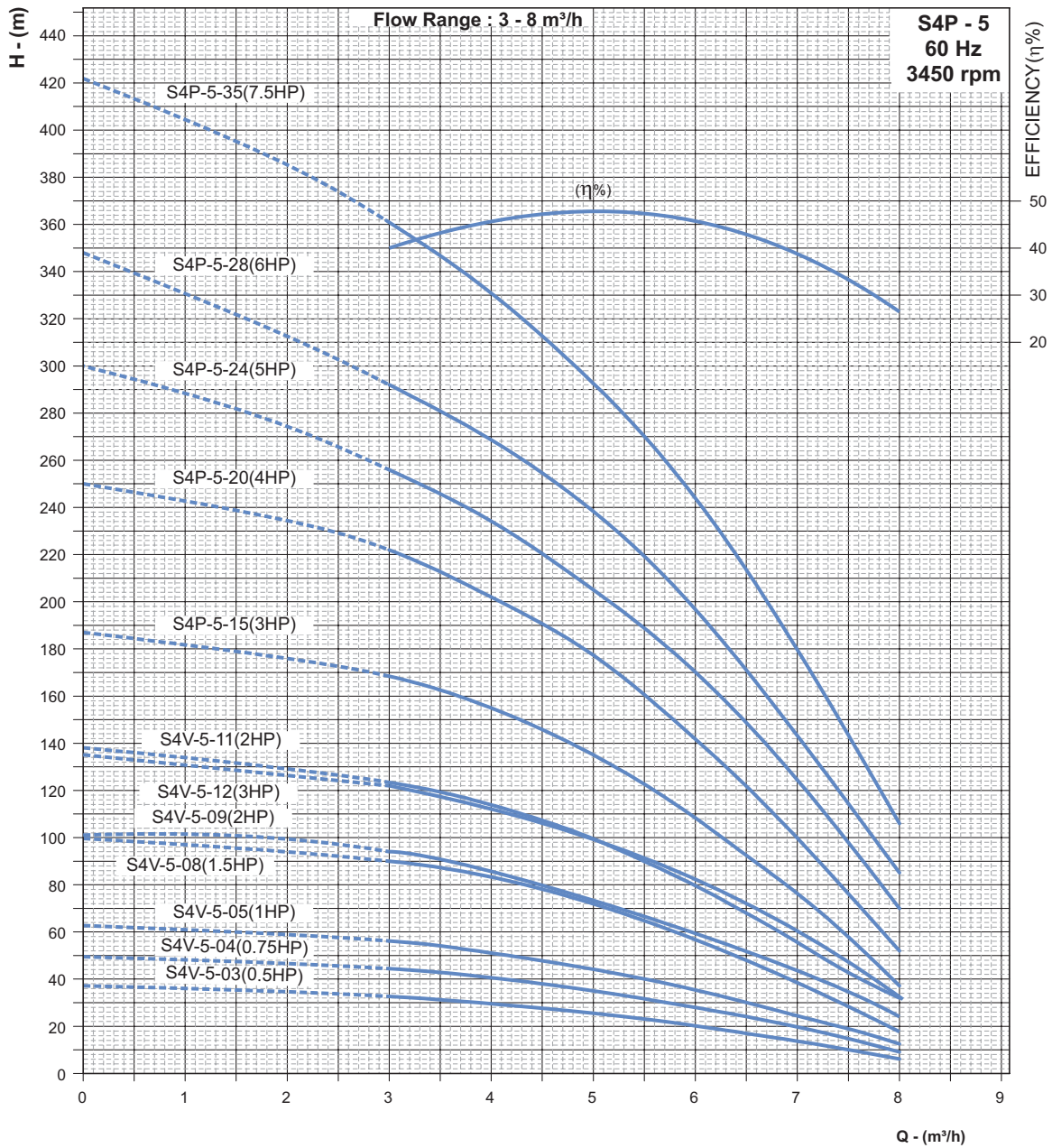


NOMINAL DIAMETER : 4"

NOMINAL FLOW - 5 m<sup>3</sup>/h

OUTLET SIZE : 1¼"/1½"

**PERFORMANCE CURVES**



Refer General Information for performance curve conditions and for other details.  
Curve tolerance according to ISO : 9906, Grade 3B.

In view of continuous developments, the information / descriptions / specifications / illustrations are subject to change without notice.

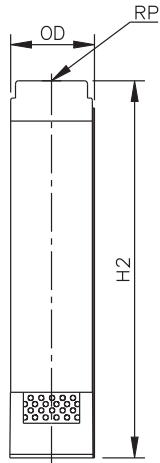


**NOMINAL DIAMETER : 4"**

**NOMINAL FLOW - 7 m<sup>3</sup>/h**

**OUTLET SIZE : 1¼"/1½"**

**DIMENSIONS & WEIGHT**



PUMP MODEL	REQUIRED MOTOR POWER		DIMENSIONS (mm)			APPROX NETT. WEIGHT (kg)
	kW	HP	OD	RP	H2	
S4V-7-04	0.75	1	98	40	389	2.42
S4V-7-06	1.1	1.5	98	40	463	2.72
S4V-7-08	1.5	2	98	40	537	2.92
S4P-7-11	2.2	3	98	40	647	4.32
S4P-7-15	3	4	98	40	825	4.69
S4P-7-19	3.7	5	98	40	972	9.33
S4P-7-21	4.5	6	98	40	1046	11.65
S4P-7-27	5.5	7.5	98	40	1298	18.61

PUMP MODEL	MOTOR HP	I / s	0	1.11	1.39	1.67	1.94	2.22	2.50	2.78
		m <sup>3</sup> /h	0	4	5	6	7	8	9	10
S4V-7-04	1	TOTAL MANOMETRIC HEAD IN METERS - (COLUMN WATER)	41	40	38	34	29	22	14	6
S4V-7-06	1.5		60	56	53	49	43	35	28	14
S4V-7-08	2		82	85	71	64	54	43	30	16
S4P-7- 11	3		112	105	100	92	79	65	45	24
S4P-7-15	4		157	143	137	128	111	90	66	34
S4P-7-19	5		202	185	177	166	147	117	83	43
S4P-7-21	6		212	197	187	174	154	126	90	49
S4P-7-27	7,5		255	260	249	232	205	169	125	74

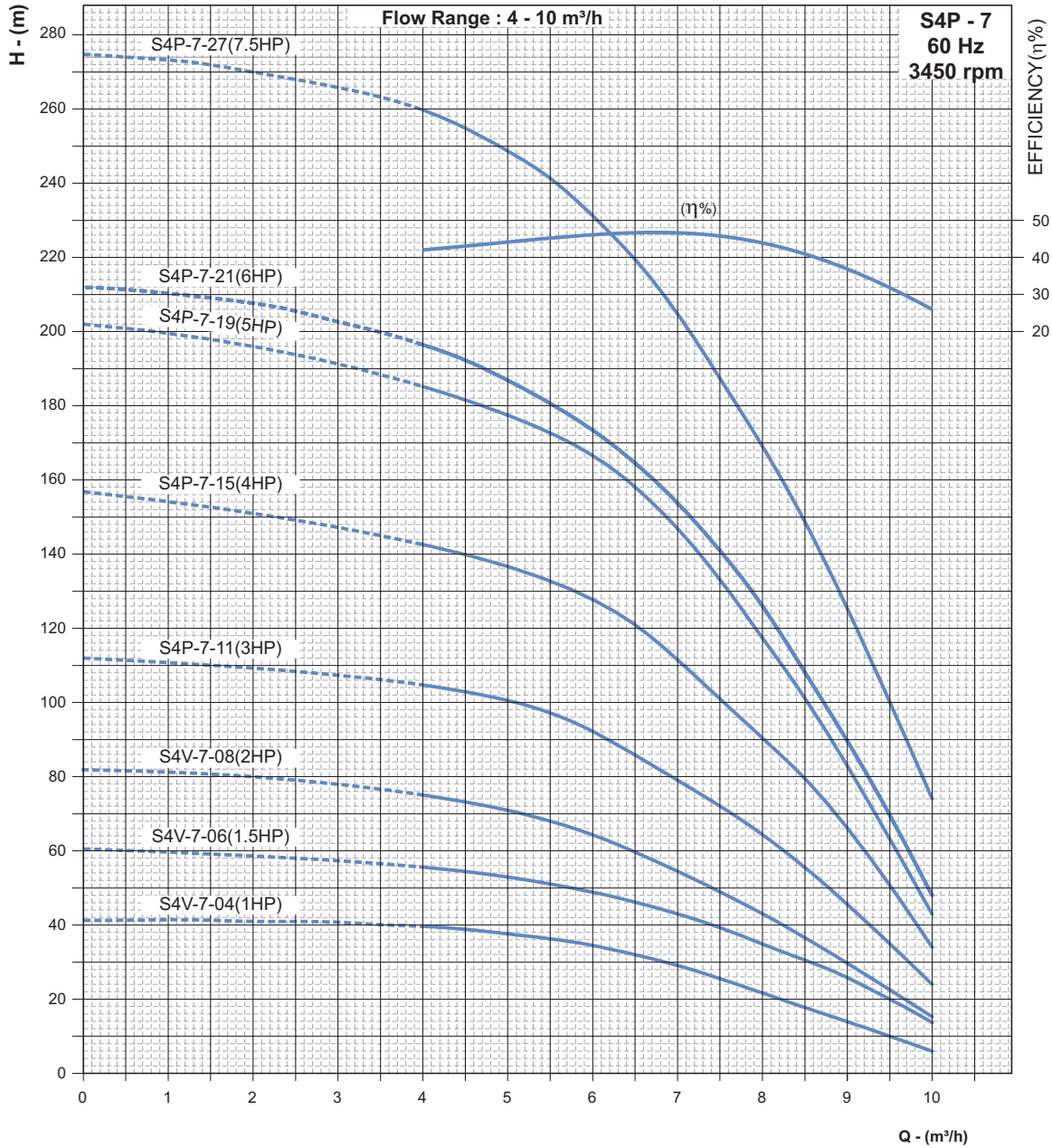


NOMINAL DIAMETER : 4"

NOMINAL FLOW - 7 m<sup>3</sup>/h

OUTLET SIZE : 1¼"/1½"

**PERFORMANCE CURVES**



Refer General Information for performance curve conditions and for other details.  
Curve tolerance according to ISO : 9906, Grade 3B.

In view of continuous developments, the information / descriptions / specifications / illustrations are subject to change without notice.

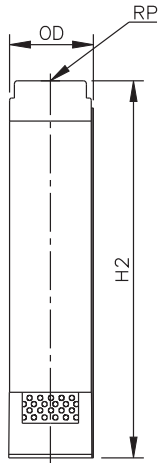


**NOMINAL DIAMETER : 4"**

**NOMINAL FLOW - 8 m<sup>3</sup>/h**

**OUTLET SIZE : 2"**

**DIMENSIONS & WEIGHT**



PUMP MODEL	REQUIRED MOTOR POWER		DIMENSIONS (mm)			APPROX NETT. WEIGHT (kg)
	kW	HP	OD	RP	H2	
S4P-8-04	1.1	1.5	98	50	374	1.72
S4P-8-06	1.5	2	98	50	436	2.57
S4P-8-09	2.2	3	98	50	529	3.86
S4P-8-12	3.0	4	98	50	622	5.16
S4P-8-15	3.7	5	98	50	715	6.43
S4P-8-18	4.5	6	98	50	838	7.72
S4P-8-23	5.5	7.5	98	50	993	9.87
S4P-8-30	7.5	10	98	50	1245	12.1

PUMP MODEL	MOTOR HP	I / s	0	1.11	1.67	2.22	2.78	3.33	3.89
		m <sup>3</sup> /h	0	4	6	8	10	12	14
S4P-8-04	1,5	TOTAL MANOMETRIC HEAD IN METERS - (COLUMN WATER)	40	36	34	32	28	20	12
S4P-8-06	2		56	52	48	45	40	32	20
S4P-8-09	3		84	78	74	68	60	48	32
S4P-8-12	4		110	104	98	92	80	64	44
S4P-8-15	5		137	128	123	114	101	80	54
S4P-8-18	6		164	152	144	130	112	88	64
S4P-8-23	7,5		210	192	180	168	128	120	80
S4P-8-30	10		276	254	236	220	195	156	106

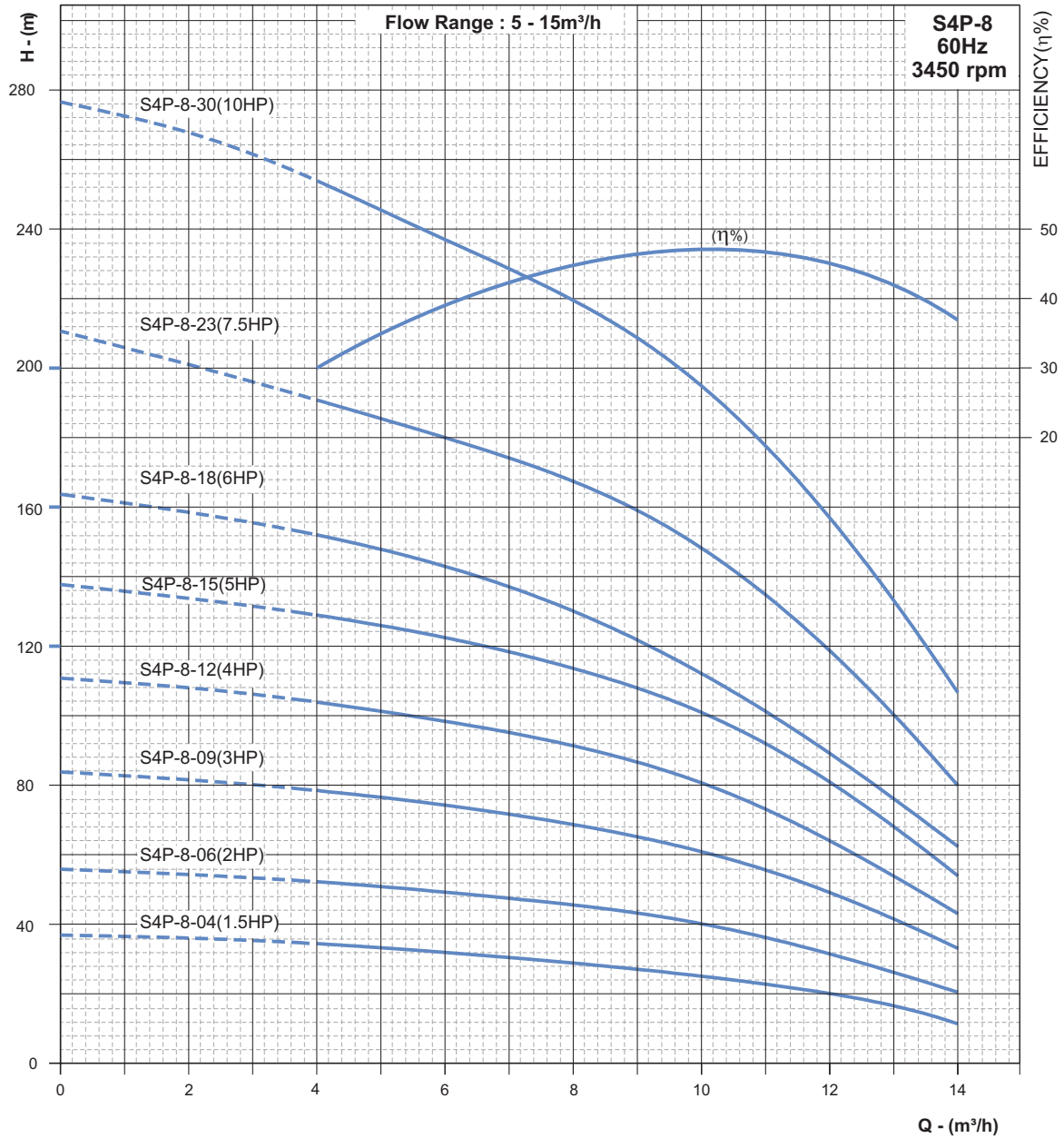


NOMINAL DIAMETER : 4"

NOMINAL FLOW - 8 m<sup>3</sup>/h

OUTLET SIZE : 2"

**PERFORMANCE CURVES**



Refer General Information for performance curve conditions and for other details.  
Curve tolerance according to ISO : 9906, Grade 3B.

In view of continuous developments, the information / descriptions / specifications / illustrations are subject to change without notice.

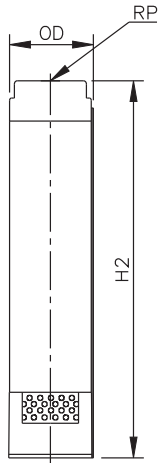


**NOMINAL DIAMETER : 4"**

**NOMINAL FLOW - 10 m<sup>3</sup>/h**

**OUTLET SIZE : 2"**

**DIMENSIONS & WEIGHT**



PUMP MODEL	REQUIRED MOTOR POWER		DIMENSIONS (mm)			APPROX NETT. WEIGHT (kg)
	kW	HP	OD	RP	H2	
S4P-10-06	1.5	2	98	50	565	6.5
S4P-10-08	2.2	3	98	50	679	7.5
S4P-10-11	3.7	5	98	50	933	10.3
S4P-10-13	3.7	5	98	50	964	10.0
S4P-10-17	5.5	7.5	98	50	1260	13
S4P-10-20	5.5	7.5	98	50	1363	13.5

PUMP MODEL	MOTOR HP	l / s	0	1.67	2.22	2.78	3.33	3.89	4.44
			m <sup>3</sup> /h	0	6	8	10	12	14
S4P-10-06	2	TOTAL MANOMETRIC HEAD IN METERS - (COLUMN WATER)	48	44	42	38	34	28	20
S4P-10-08	3		66	60	57	53	46	38	28
S4P-10-11	5		87	79	75	69	60	48	33
S4P-10-13	5		107	95	91	86	76	63	47
S4P-10-17	7.5		135	122	116	104	89	70	52
S4P-10-20	7.5		168	148	138	127	110	91	66



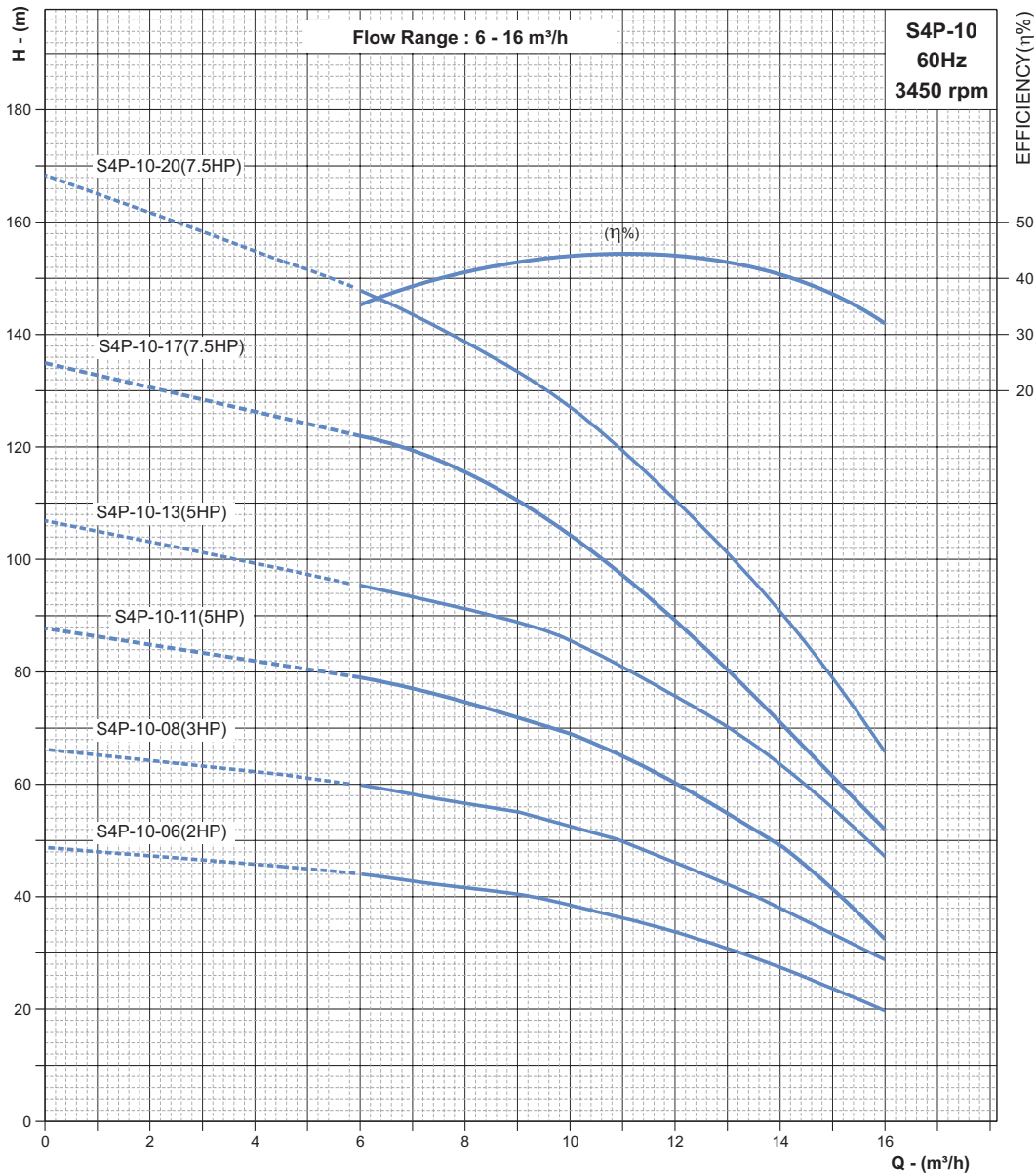


NOMINAL DIAMETER : 4"

NOMINAL FLOW - 10 m<sup>3</sup>/h

OUTLET SIZE : 2"

**PERFORMANCE CURVES**



Refer General Information for performance curve conditions and for other details.  
Curve tolerance according to ISO : 9906, Grade 3B.

In view of continuous developments, the information / descriptions / specifications / illustrations are subject to change without notice.

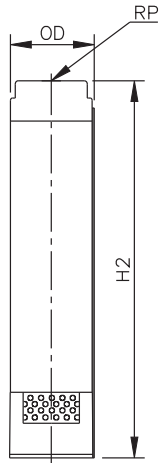


**NOMINAL DIAMETER : 4"**

**NOMINAL FLOW - 14 m<sup>3</sup>/h**

**OUTLET SIZE : 2"**

**DIMENSIONS & WEIGHT**



PUMP MODEL	REQUIRED MOTOR POWER		DIMENSIONS (mm)			APPROX NETT. WEIGHT (kg)
	KW	HP	OD	RP	H2	
S4P-14-04	1.5	2	98	50	554	4.0
S4P-14-05	2.2	3	98	50	632	5.2
S4P-14-07	3	4	98	50	710	7.3
S4P-14-09	3.7	5	98	50	944	9.8
S4P-14-13	5.5	7.5	98	50	1256	13.5

PUMP MODEL	MOTOR HP	TOTAL MANOMETRIC HEAD IN METERS - (COLUMN WATER)	l / s	0	2.22	2.78	3.33	3.89	4.44	5.00	5.56
			m <sup>3</sup> /h	0	8	10	12	14	16	18	20
S4P-14-04	2			33	30	29	26	24	21	18	16
S4P-14-05	3		43	39	37	34	31	27	24	21	
S4P-14-07	4		59	53	51	47	42	37	32	27	
S4P-14-09	5		75	70	66	61	55	48	42	36	
S4P-14-13	7.5		108	99	95	88	79	69	60	52	

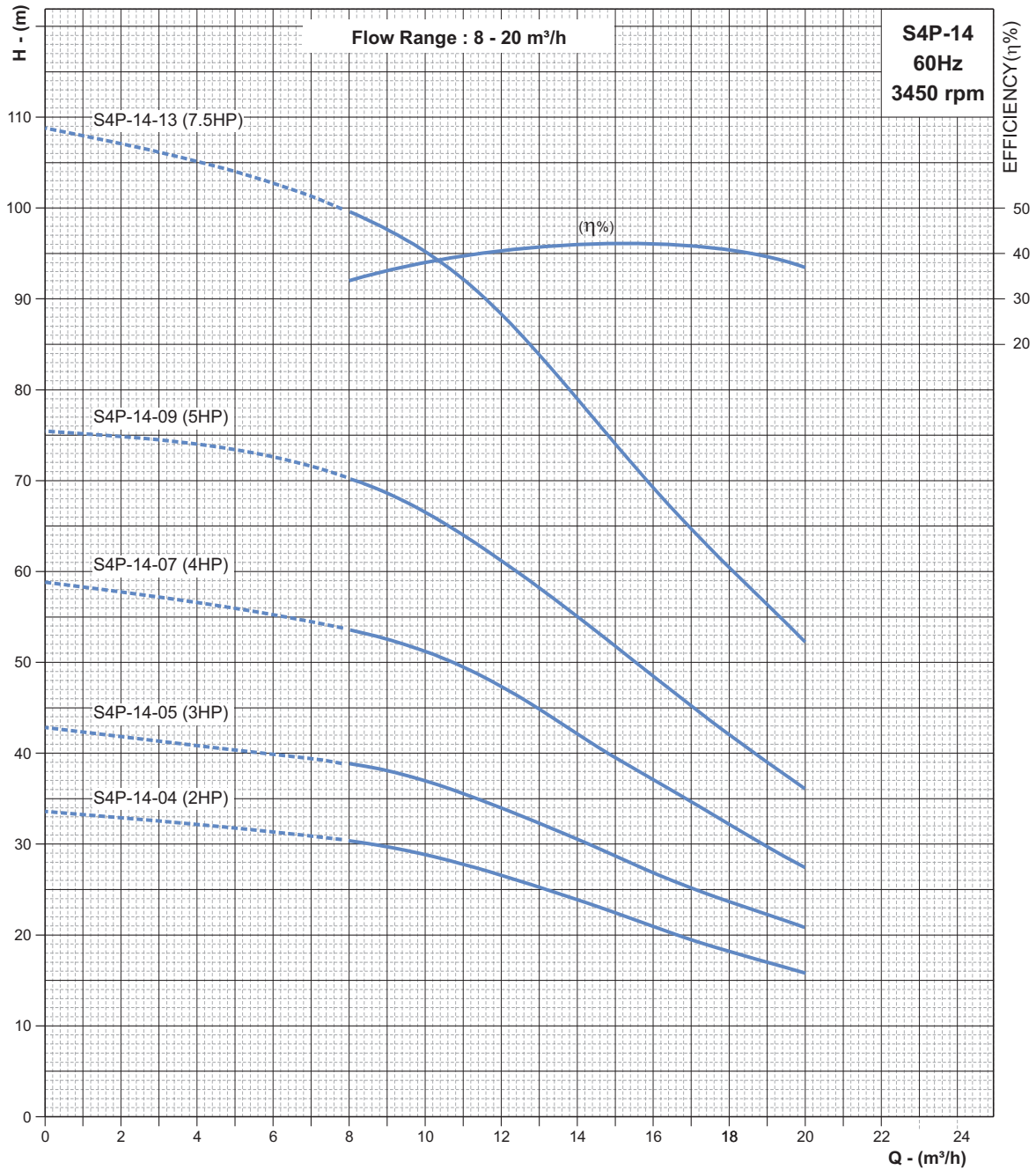


NOMINAL DIAMETER : 4"

NOMINAL FLOW - 14 m<sup>3</sup>/h

OUTLET SIZE : 2"

### PERFORMANCE CURVES



Refer General Information for performance curve conditions and for other details.  
Curve tolerance according to ISO : 9906, Grade 3B.

In view of continuous developments, the information / descriptions / specifications / illustrations are subject to change without notice.

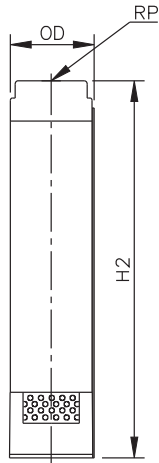


**NOMINAL DIAMETER : 4"**

**NOMINAL FLOW - 18 m<sup>3</sup>/h**

**OUTLET SIZE : 2"**

**DIMENSIONS & WEIGHT**



PUMP MODEL	REQUIRED MOTOR POWER		DIMENSIONS (mm)			APPROX NETT. WEIGHT (kg)
	kW	HP	OD	RP	H2	
S4P-18-04	1.5	2	98	50	509	2.8
S4P-18-06	2.2	3	98	50	650	4.2
S4P-18-09	3	4	98	50	861	6.3
S4P-18-11	3.7	5	98	50	1003	7.7
S4P-18-13	4.5	6	98	50	1143	9.1
S4P-18-16	5.5	7.5	98	50	1355	11.2
S4P-18-22	7.5	10	98	50	1778	15.4

PUMP MODEL	MOTOR HP	I / s	0	2.78	3.89	4.44	5.00	5.55	6.67	7.22
			m <sup>3</sup> /h	0	10	14	16	18	20	24
S4P-18-04	2	TOTAL MANOMETRIC HEAD IN METERS - (COLUMN WATER)	26	23	20	19	17	15	12	10
S4P-18-06	3		40	33	29	27	25	23	17	14
S4P-18-09	4		58	51	45	42	38	35	27	23
S4P-18-11	5		71	60	54	50	47	43	34	29
S4P-18-13	6		79	67	62	57	53	48	37	34
S4P-18-16	7.5		102	86	78	73	67	61	47	40
S4P-18-22	10		141	125	110	103	94	86	67	57

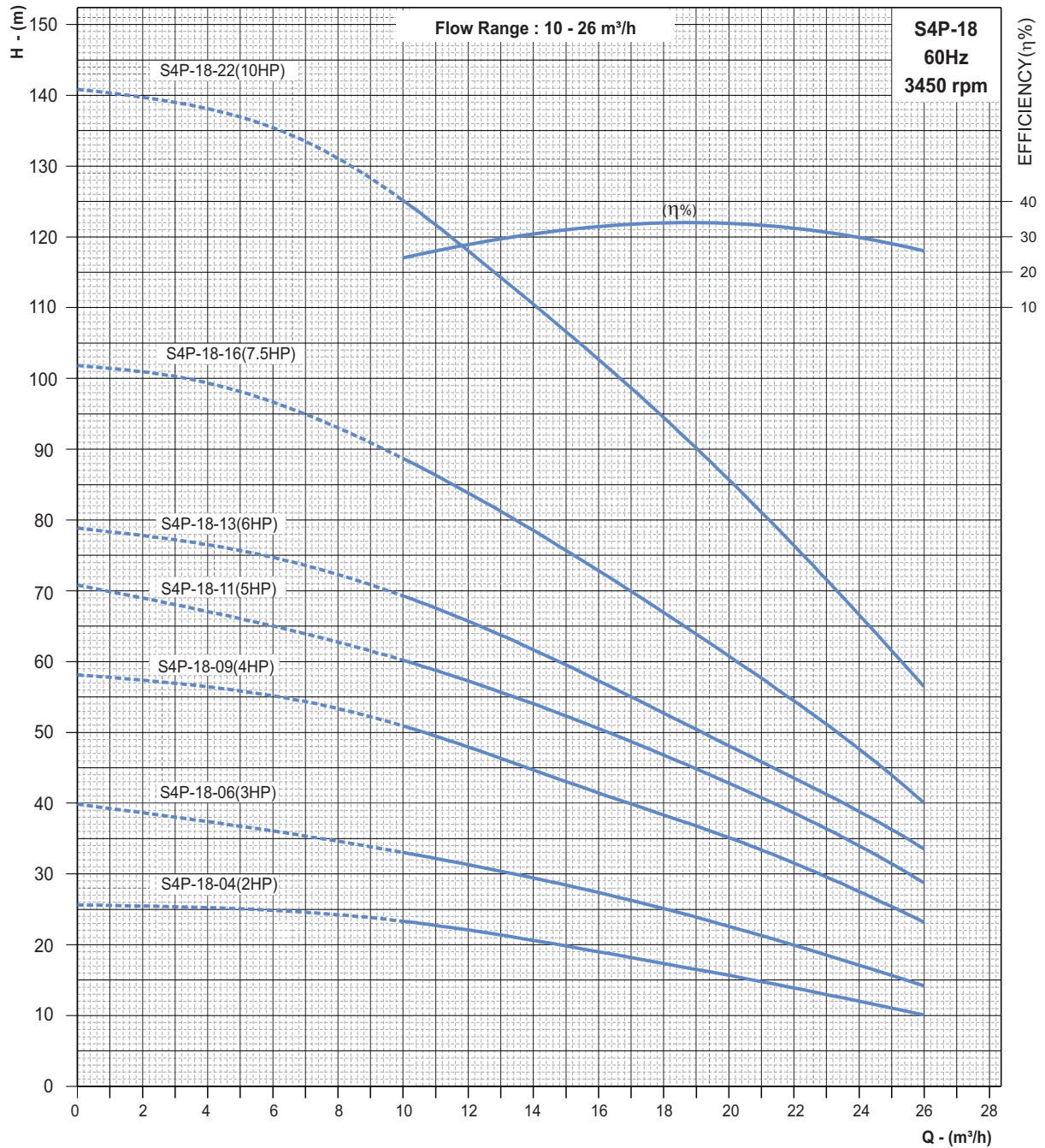


NOMINAL DIAMETER : 4"

NOMINAL FLOW - 18 m<sup>3</sup>/h

OUTLET SIZE : 2"

**PERFORMANCE CURVES**



Refer General Information for performance curve conditions and for other details.  
Curve tolerance according to ISO : 9906, Grade 3B.

In view of continuous developments, the information / descriptions / specifications / illustrations are subject to change without notice.

## **C.R.I. PUMPS (PVT) LIMITED**

(International Division)

7/46-1, Keeranatham Road, Saravanampatty, Coimbatore - 641 035. **India.**

Phone : +91-422-3911610, 3911612. Fax : +91-422-3911600, e-mail : cri@crifluidsystems.com website : www.crifluidsystems.com

### **BOMBAS C.R.I. ESPAÑA, S.L.**

Polígono Industrail El.Bony Calle 31, No. 137, 46470  
Catarroja (Valencia) **Spain.**

Tel : +34-96 1842 974, Fax : +34-96 1842 977

e-mail : cri@bombascri.es website : www.bombascri.es

### **BOMBAS C.R.I. ESPAÑA S.L. UNIPERSONAL**

Via Linara 8, 82030, Limatola-BENEVENTO-Italy

Tel :+39. 0823 586 904

e-mail : cri@bombascri.it website:www.crifluidsystems.com

### **C.R.I. BOMBAS HIDRÁULICAS LTDA**

Av. Rodrigo Fernando Grillo, 457, Jd. Manacas,  
CEP - 14.801-534, Araraquara - SP, **Brasil.**

Fone : +55-16-3331 1099, Fax : +55-16-3331 5344

e-mail : cri@cribombas.com.br website : www.cribombas.com.br

Filial : Jaboatão dos Guararapes-PE, Brasil.

Fone : (81) 3093-9620, Fax : (81) 3093-9600.

### **C.R.I. PUMPS S.A. (PTY) LIMITED**

P.O. Box 6292, Halfway House, Midrand - 1685,  
Johannesburg, **South Africa.**

Tel : +27-11-8058631 / 32, Fax : +27-11-8058630

e-mail : cri@cripumps.co.za website : www.cripumps.co.za

Branches : Capetown : + 27-21-9499122

Durban : + 27-31-7001814

### **C.R.I. POMPA SANAYİ VE TİCARET LİMİTED ŞİRKETİ**

10032 Sk. No:12 A.O.S.B. 35620 Çiğli-İzmir-Türkiye.

Tel : +90-232-328-328 22 99, Fax : +90-232-328 23 33

e-mail : cri@cripompa.com website : www.cripompa.com

### **PT. C.R.I. FLUID SYSTEMS**

Soho Capital @ Podomoro City 16th Floor, Suite SC - 1606A,  
Jl. Letjen S. Parman, Kav. 28 Kel. Tanjung Duren Selatan  
Kec. Grogol Petamburan Kota Adm.

West Jakarta Province DKI Jakarta. Website : www.crifluidsystems.com

### **C.R.I. FLUID SYSTEMS USA LLC**

4655, Wright Rd, Stafford, Texas 77477, **USA.**

Tel : (470) 226 3393, Email : sales@crigroups.us

Website : www.crigroups.us

### **C.R.I. PUMPS (FZE)**

P.O. Box 7988, A4-12 SAIF-Zone, **Sharjah, U.A.E.**

Tel : +971-6-5573041 (3 Lines), Fax : +971-6-5573042

e-mail : cripumps@eim.ae website : www.cripumps.ae

### **C.R.I. FLUID SYSTEMS INC.,**

Polyland Industrial Subdivision, Warehouse #3, Block 4,

Kendex St., Bo. Iba, Meycauayan, Bulacan. **Philippines.** Zip-3020.

Phone : +63 44 762 8887 / +63 44 802 6199, Fax : +63 44 762 8883.

e-mail : sales.ph@crigroups.com Website : www.crifluidsystems.com

### **C.R.I. FLUID SYSTEMS (BD) LTD.,**

Ground Floor, Unit-1 Holding No 212, Tejgaon Industrial Area,

Tejgaon - Gulshan Link Rd, Dhaka - 1208, **Bangladesh**

Website : www.crifluidsystems.com

### **C.R.I. PUMPS (Shanghai) Co., Ltd.**

Room 902, Building No.7, 1855 Qixin Road,

Minhang District, **Shanghai** - 201101, China.

Tel : +86-21-54405082, Fax : +86-21-54405083

e-mail : cri@bombascri.com.cn

website : www.bombascri.com.cn

### **SUZHOU C.R.I. PUMPS CO., LTD.**

579, Longqia Road, Wujiang District - 215200

**Suzhou, China.** Telephone : +86-512-634 33668

Fax : +86-512-634 33667, e-mail : cri@crisuzhou.com.cn

### **C.R.I. FLUID SYSTEMS AUSTRALIA PTY LIMITED**

1198 Toorak Road Camberwell Victoria 3124, **Australia**

Phone : +61-3 9804 0888 FAX : +61 3 9804 0322

Website : www.crifluidsystems.com