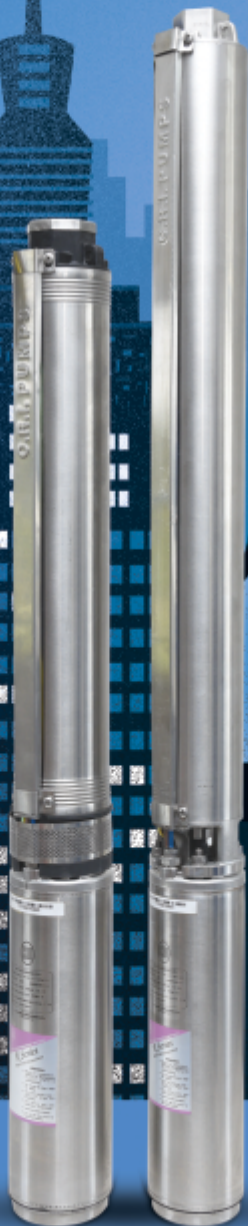




C.R.I. PUMPS

Pumping trust. Worldwide.

3" & 4" SUBMERSIBLE
PUMP MOTOR ASSEMBLY
SILVER LINE SERIES - **60Hz**



An ISO 9001 Company



**For specific models only
**Products bearing NSF mark
are only NSF Certified



*For specific models only
*Products bearing CSA
mark are only CSA certified





C.R.I. FLUID SYSTEMS

Pumping trust. Worldwide.

THE BEGINNING

of C.R.I., way back in 1961, was a resolute attempt to produce a few irrigation equipments using the limited facilities of an inhouse foundry. Eventually the founder's dream was coming true as the small production unit he started kept growing rapidly. Now, after more than five eventful decades, it is an enormous, widely reputed organization, which produces more than 9000 varieties of perfectly engineered pumps and motors and sells its products in 120 countries across 6 continents.

C.R.I. IS ONE AMONG

the few pioneers in the world to produce 100% stainless steel submersible pumps and it is a leading manufacturer of environment friendly water filled , rewindable motors. C.R.I. has extensive range of industrial pumps that include end suction pumps, Slurry pumps, Chemical pumps, Waste water pumps, Split case pumps, Booster pumps etc. today C.R.I. is rubbing its shoulders with the best brands in the world, with advanced technology and safety standards as its hallmarks.

THE INFRASTRUCTURE

of C.R.I. is pretty comprehensive with state-of-the-art machineries and a high potential R&D wing. Total production area over 3.2 million SF, Fully equipped with world class, Machineries with a manufacturing capacities of more than 3 Million pumps and Motors per year and over 9000 product variant are accredited with international quality certifications such as NSF, CSA, CE, UL, TSE, ISO 9001.

NEEDLESS TO SAY,

behind this legendary growth lies the untiring, innovative, enthusiastic and dedicated team work. and, of course, a flawlessly maintained value system too. The name C.R.I. itself encapsulates the company's ethos:

" Commitment, Reliability, Innovation".





C.R.I. FLUID SYSTEMS

Pumping trust. Worldwide.

Vision, Mission and Values

To be the industry leader providing best - in - class fluid management solutions to individual and institutional customers and societies in our chosen markets.

We will achieve this through our dedicated efforts to enhance the welfare of all our stakeholders and by living by our values of **commitment, reliability** and **innovation**.

C O N T E N T S

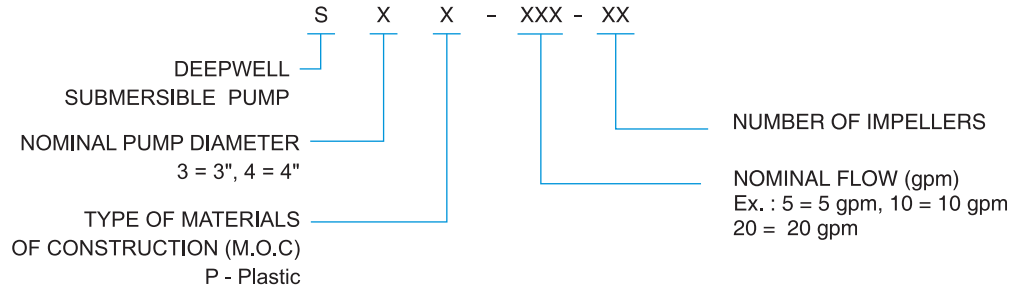
	Page No.
<hr/>	
SILVERLINE SERIES	
<hr/>	
Model Identification Code (MIC)	4
Pumped Liquids & Performance Curve Conditions	5
3" PMA's	
General Information	6
Technical Specification and Materials of Construction	7
Exploded View	8-9
Performance Table & Performance Curve	10-13
Dimensions & Weight	14
4" PMA's	
General Information	15
Technical Specification and Materials of Construction	16-17
Exploded View	18-20
Performance Table, Performance Curve, Dimensions & Weight	21-35



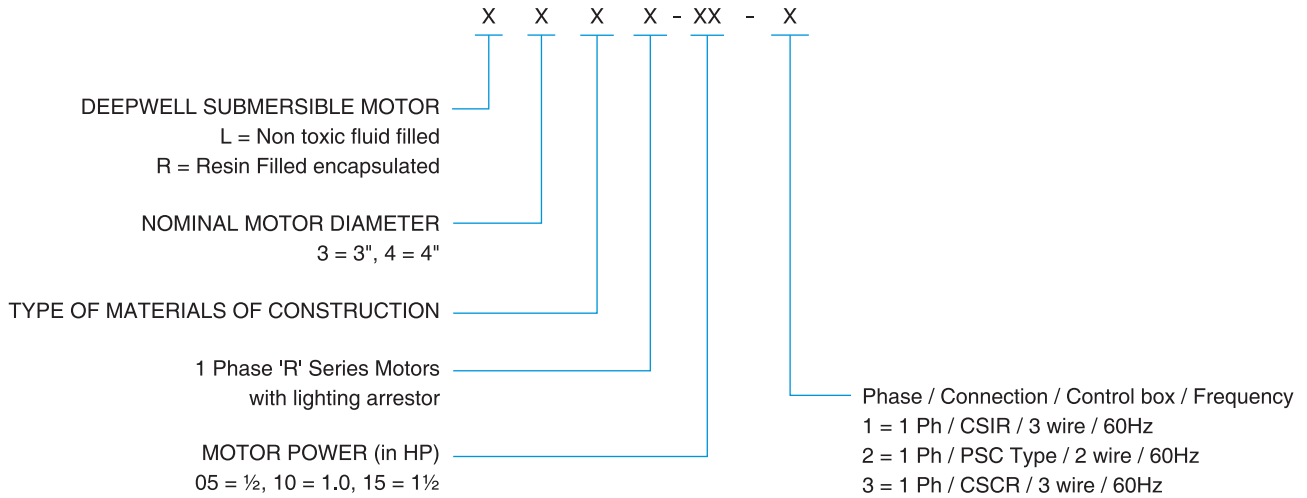
SILVER LINE SERIES

MODEL IDENTIFICATION CODE

DEEPWELL SUBMERSIBLE PUMP



DEEPWELL SUBMERSIBLE MOTOR



DEEPWELL SUBMERSIBLE PUMP SET (Pump + Motor)		
PUMP MODEL	+	MOTOR MODEL
S X X - XXX - XX	+	X X X X - XX - XX
DEEPWELL SUBMERSIBLE PUMP SET (Pump + Motor)		
PUMP MODEL	+	MOTOR MODEL
S3P-10-24	+	L3A-10-2E
S4P-15-06	+	R4AS-05-3E

SILVER LINE SERIES

Pumped Liquids

Clean, Thin, Non-aggressive, Non explosive, Clear, Cold, Fresh Water without abrasives, Solid particles or fibre having the following characteristics

a)	Temperature	91.4°F (max)
b)	Permissible amount of sand	0.42 lb/1000 gal (max)
c)	Chlorine ion density	50 ppm (max)
d)	Allowable solids	50 ppm (max)
e)	Specific gravity	1.004 (max)
f)	Hardness (Drinking water)	300 ppm (max)
g)	Kinematic Viscosity	1mm ² /s (1cSt) (max)
h)	Turbidity	50 ppm silica scale (max)
i)	pH	6.5 to 8.5

PERFORMANCE CURVE CONDITIONS

The conditions below apply to the curves shown on the following pages.

- a. The Performance curve shows pump performance at rated speed and @ 10ft minimum submergence.

The nominal speed of pumpset - 3450 rpm

- b. The measurements were made with clear, airless water at 68°F and specific gravity of 1. When pumping liquids with a density higher than that of water, motors with correspondingly higher outputs must be used.
- c. Pipe friction losses have not been included in the performance curves and performance tables.
- d. The bold curves indicate the recommended operating range.
- e. Q/H : The curves are inclusive of check valve and suction inter-connector losses at the actual speed.
- f. Efficiency curve: "Eta" shows pump stage efficiency.
- g. Curve tolerance according to HI: 14.6/ISO: 9906, Grade - 3B
- h. The performances are at rated speed and are only Indicative. Actual discharge depends on availability of water in well, based on strength of water source, height of water column, submergence of pump, etc.,.
- i. The outlet size of the pumps are as per NPT standard.

SILVER LINE SERIES



PUMP MOTOR ASSEMBLY - 3" PMA's

GLOBAL QUALITY IN THE AMERICAN CONTEXT

To make a break and establish a presence in a highly competitive environment is always a challenge. A challenge that a company of C.R.I.'s stature is always open to. C.R.I. Fluid systems USA LLC has been set up with the express intention of serving the American market and is equipped at every level to provide complete solutions for different segments. It has its distribution facility in Stafford in Texas.

C.R.I. 3" PMA's are designed for pumping water from deep wells. All the VITAL components that come into contact with the liquid are made of stainless steel and food grade engineering thermoplastic. The optimized hydraulic design offers maximum efficiency. Floating impeller design can handle little higher sand than the standard centrifugal pump and reduce the down thrust load that is transferred to motor. The pump is firmly coupled to a 3" 2 wire rewindable submersible electric motor for trouble free service. Dynamically balanced rotor and quality bearing ensures vibration and noise free operation and thereby increase the life cycle of pumpset.



Design Features :

- Rigid and compact design
- Wide hydraulic ranges
- Floating impeller design
- Stainless steel suction inter connector and non-return valve

Applications

- Ground water supply to residences and commercial buildings
- Gardens
- Landscaping
- Pressure boosting
- Livestock watering

SILVER LINE SERIES

Nominal Diameter : **3"**

Technical Specification

Nominal Diameter	3"
Power range	½ HP - 1½ HP
Speed	3450 rpm
Versions	Single Phase : 230V, 60Hz, AC Supply
Discharge Range	2.5 - 30 US gpm
Head Range	15 - 530 ft
Minimum cooling flow	0,26 ft/s
Class of Insulation	F
Ingress Protection	IP 68
Type of Duty	S1 (Continuous)
Max. Liquid temp.	91.4°F
Method of Starting	Permanent Split Capacitor (PSC)
Outlet size	1" NPT

Materials of construction - Motor

Part Name	MOC
Upper Housing	Cast Iron
Upper Shell	SS 304
Mechanical Seal	Carbon / Ceramic
Shaft	SS 420
Stator Shell	SS 304
Diaphragm	High Nitrile Rubber
Diaphragm Bottom Plate	SS 304
Lower Housing	Cast Iron / Aluminium

Materials of construction - Pump

Part Name	Material
Pump Shaft	SS 304
Coupling	SS 410
Suction Interconnector	SS 304
Diffuser Chamber	Noryl
Impeller	Delrin
Bracket	Noryl
Bush	NBR
Upthrust Washer	SS 304
Sleeve	SS 304
Pump Tube	SS 304
Strainer	SS 304
Check Valve Housing	SS 304
Check Valve Guide	Noryl
Check Valve	Delrin / NBR / SS 304
Lock Nut	SS 304
Cable Guard	SS 304

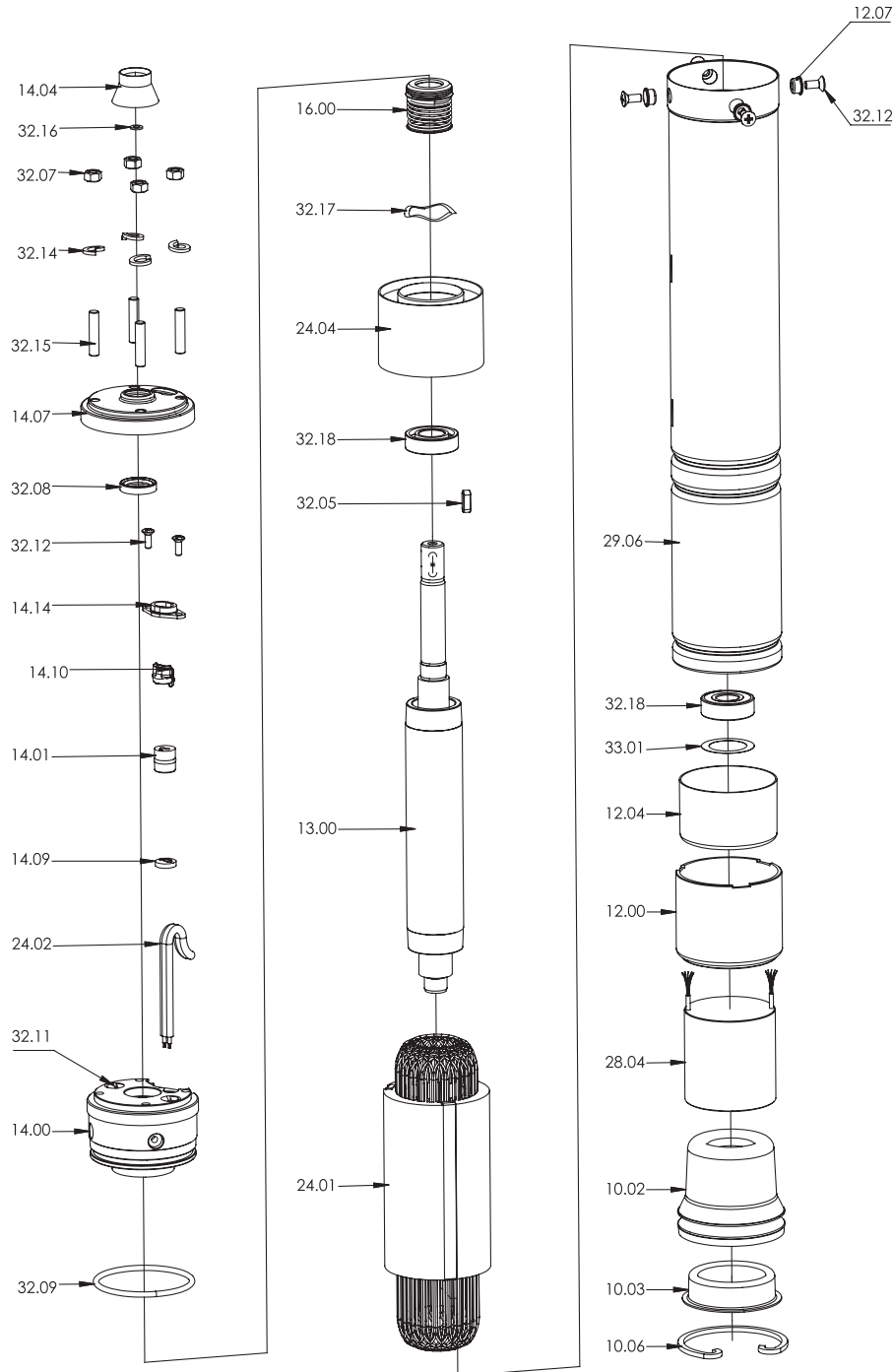
SILVER LINE SERIES



Nominal Diameter : **3"**

"L" Series
(½ to 1½ HP - 2 wire)

Exploded View



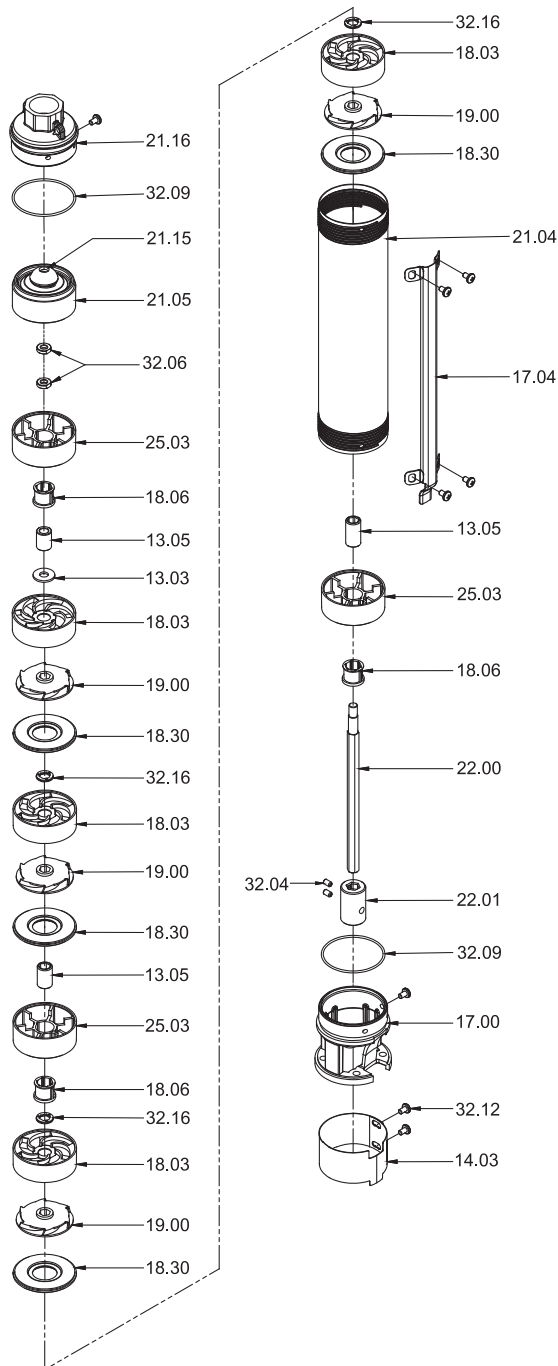
Part No.	Part Name
10.02	Diaphragm
10.03	Diaphragm Bottom Plate
10.03	Snap Ring
12.00	Lower Housing
12.04	Winding Guard
12.07	Guide Bush
13.00	Rotor
14.00	Upper Housing
14.01	Cable Grommet
14.04	Sand Guard-Rubber
14.09	Grommet Washer
14.10	Cable Plug Guide
14.14	Cable Clamp
16.00	Mechanical Seal
24.01	Wound Stator
24.02	Cable
24.04	Winding Guard
28.04	Capacitor
29.06	Outer Shell
32.05	Key
32.07	Nut
32.08	Oil Seal
32.09	O-ring
32.11	Plug
32.12	Screw
32.14	Spring Washer
32.15	Stud
32.16	Washer
32.17	Wave Washer
32.18	Bearing
33.01	Adjustment washer

SILVER LINE SERIES

Nominal Diameter : 3"

S3P Series
(10 & 22 gpm)

Exploded View



Part No.	Description
14.03	Strainer
32.12	Screw
17.00	Suction inter connector
32.09	O ring
22.01	Coupling
22.00	Pump shaft
18.06	Bush
25.03	Bracket
13.05	Sleeve
21.04	Pump tube
17.04	Cable guard
18.30	Diffuser plate
19.00	Impeller
18.03	Diffuser
32.16	Washer
13.03	Up thrust washer
32.06	Lock nut
21.05	Check valve guide
21.15	Check valve cone
21.16	NRV



SILVER LINE SERIES

Nominal Diameter : **3"**

Nominal Flow : **10 gpm**

Outlet Size : **1" NPT**

Performance Table

PMA MODEL	HP	PSI	Depth to Pumping Water Level or Lift in Feet															
			0	20	40	60	80	100	120	140	160	180	200	220	240	260		280
S3P-10-07 + L3A-05-2E	1/2	0	-	-	14	12.7	11.1	9.2	6									Shut-off 142 ft
		20	13.2	12.3	10.6	8.5	4.5											
		30	12.2	10.4	8.3	3.3												
		40	9.8	7.5	0.3													
		50	7.2															
		60																
		80																
Shut-off - PSI			62	58	50	41	32	23	15	6								
S3P-10-11 + L3A-05-2E	1/2	0	-	-	14.3	8.9	13.2	12.3	11.3	10.3	9.2	7.4	4.3					Shut-off 220 ft
		20	14.5	13.6	12.7	11.8	11	10	8.6	6.8	2.5							
		30	13.6	12.7	11.7	10.8	9.8	8.5	6.5	2.3								
		40	8	11.6	10.6	9.6	8.2	6	0.5									
		50	11.5	10.5	9.4	7.8	5.4											
		60	10.4	9.3	7.6	4.9												
		80	7	3														
Shut-off - PSI			95	93	84	75	67	58	49	40	32	23	14	6				
S3P-10-15 + L3A-07-2E	3/4	0	-	-	-	14.9	14.3	13.8	12.9	12.2	11.4	10.5	9.5	8.3	6.2	2.3		Shut-off 292 ft
		20	-	14.6	14.2	13.4	12.6	11.9	11.2	10.3	9.3	7.6	5.2	0.7				
		30	14.6	14	13.4	12.9	11.8	11	10.2	9	7.5	4.8						
		40	13.8	13.2	11.9	11.6	10.8	9.8	8.6	7	3.7							
		50	13.1	12.3	11.6	10.7	9.7	8.5	6.7	3.5								
		60	12.6	11.5	10.6	9.6	8.4	6.5	3									
		80	10.3	9.3	7.9	5.4	1.3											
Shut-off - PSI			127	117	108	100	91	82	73	65	56	47	39	30	21	13		
S3P-10-21 + L3A-07-2E	3/4	0			15	14	13	11.8	10.6	9.2	7.3	3.5						Shut-off 392 ft
		20			13.9	12.8	11.6	10.4	8.8	6.6	2.3							
		30			13.2	10.7	9.6	7.5	4.2	0.2								
		40			12.6	6.6	2.6											
		50			12													
		60			11.3													
		80			10.4													
Shut-off - PSI			170	152	135	117	100	83	65	48	30	13						
S3P-10-24 + L3A-10-2E	1	0			14.5	13.8	12.8	13	11	10	8.9	6.3	0.6					Shut-off 454 ft
		20			14.3	13.6	12.3	11.9	11	10	8.6	5.8	1.2					
		30			14	12.2	11.7	10.5	9	6.6	2.5							
		40			13.8	10	8.6	5.6	1									
		50			12.9	1.8												
		60			12.5													
		80			11.4													
Shut-off - PSI			197	183	165	148	130	113	96	78	61	43	26	4				
S3P-10-27 + L3A-15-2E	1 1/2	0				14.4	13.7	12.9	12.2	11.4	10.6	9.3	8	4.5				Shut-off 530 ft
		20				14.4	13.6	12.7	12	11.3	10.5	9.5	8.2	4.5			1	
		30				14.5	13	12.3	11.6	10.7	5.7	8.5	6.5	2.3				
		40				14.3	11.5	10.5	9.5	8.3		1						
		50				13.7	8.4	5.9	1.4									
		60				13.5												
		80				12.3												
Shut off - PSI			230	213	196	178	161	143	126	109	91	74	57	35	13			

In view of continuous developments, the information / descriptions / specifications / illustrations are subject to change without notice.

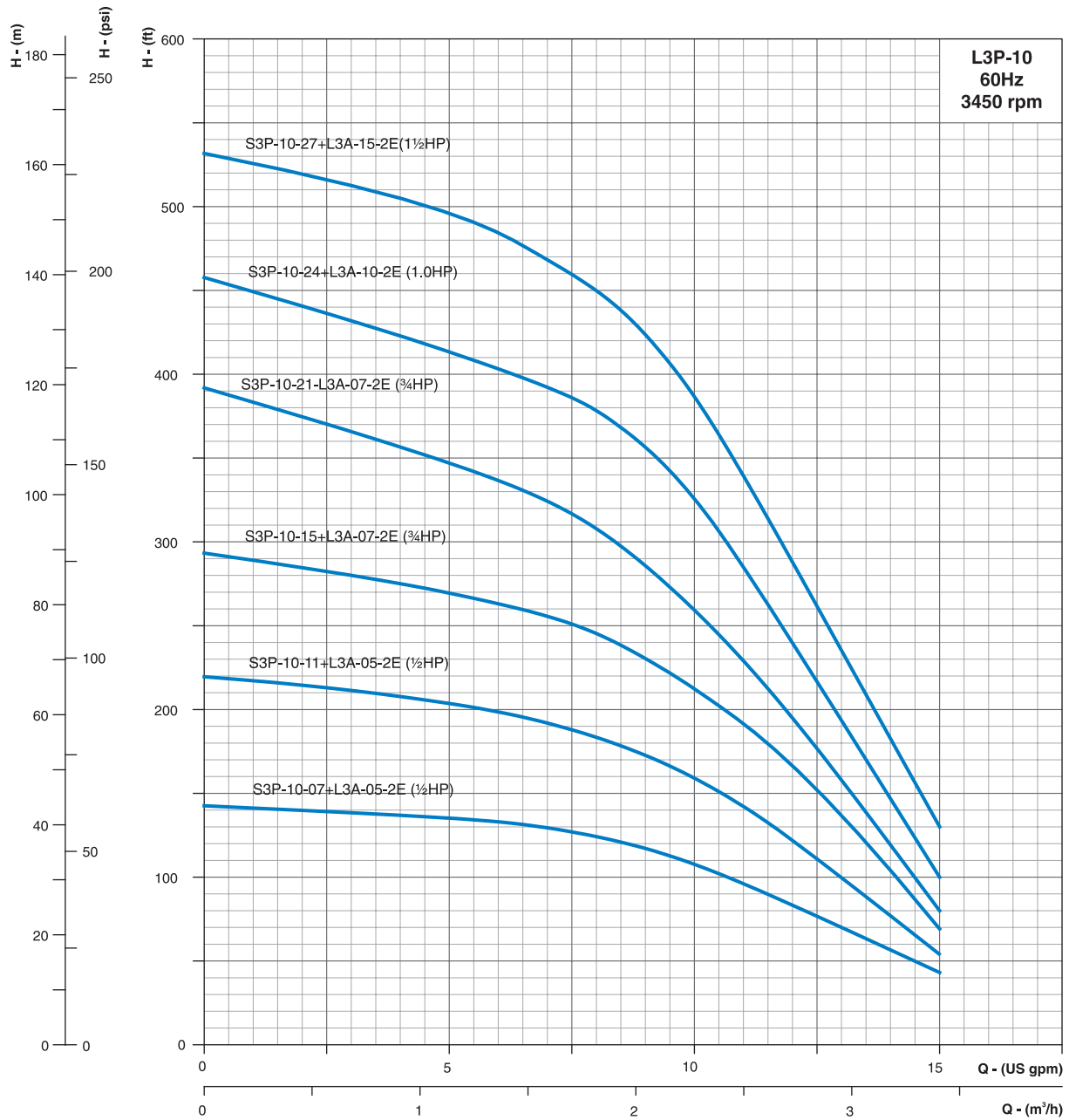
SILVER LINE SERIES

Nominal Diameter : **3"**

Nominal Flow : **10 gpm**

Outlet Size : **1" NPT**

Performance Curves



Curve tolerance according to ISO : 9906, Grade - 3B.

In view of continuous developments, the information / descriptions / specifications / illustrations are subject to change without notice.



SILVER LINE SERIES

Nominal Diameter : **3"**

Nominal Flow : **22 gpm**

Outlet Size : **1" NPT**

Performance Table

PMA MODEL	HP	PSI	Depth to Pumping Water Level or Lift in Feet													Shut-off - 79ft		
			0	25	50	75	100	125	150	175	200	225	250	275	300		325	350
S3P-22-04 + L3A-05-2E	½	0	29.3	24	7													
		10	24.2	13														
		20	14															
		30																
		40																
Shut-off - PSI		34	23.5	12.6	1.7													

PMA MODEL	HP	PSI	Depth to Pumping Water Level or Lift in Feet													Shut-off - 135ft		
			0	25	50	75	100	125	150	175	200	225	250	275	300		325	350
S3P-22-07 + L3A-05-2E	½	0	20.5	27.8	24.3	20.1	8											
		10	28	25	20.3	11												
		20	25	20.5	11													
		30	20.3	13														
		40	13															
Shut-off - PSI		59	48	37	26	15	4.3											

PMA MODEL	HP	PSI	Depth to Pumping Water Level or Lift in Feet													Shut-off - 190ft		
			0	25	50	75	100	125	150	175	200	225	250	275	300		325	350
S3P-22-10 + L3A-07-2E	¾	0	-	28.9	26.4	24	8											
		10	29	27.8	24.3	21.7	17.6											
		20	26.8	24.3	22	18	12											
		30	24.5	22	18.5	12.5												
		40	21.8	18.8	14.5													
Shut-off - PSI		82	72	61	50	39	28											

PMA MODEL	HP	PSI	Depth to Pumping Water Level or Lift in Feet													Shut-off - 250ft		
			0	25	50	75	100	125	150	175	200	225	250	275	300		325	350
S3P-22-13 + L3A-10-2E	1	0	-	29.5	27.6	25.8	23.9	22	20	17.5	13							
		10	-	27.8	25.8	24.3	22	20.3	17.7	13.5	1.5							
		20	28	26	24.2	22.4	20.5	18	17.5	4								
		30	26.2	24.3	22.3	20.5	18.2	14.2	5									
		40	24.2	22.5	20.7	18.2	13.2	7										
Shut-off - PSI		108	98	87	76	65	54	43.5	32	21.7	11							

PMA MODEL	HP	PSI	Depth to Pumping Water Level or Lift in Feet													Shut-off - 302ft		
			0	25	50	75	100	125	150	175	200	225	250	275	300		325	350
S3P-22-16 + L3A-10-2E	1	0	-	30.3	28.8	27.3	25.9	24.5	23	21.3	19.2	16.5	12.2	1				
		10	30.2	29	27.3	26	24.6	23.2	22.5	19.5	16.7	13	2					
		20	29	27.5	26	24.7	23.2	21.6	13.2	17	13	3						
		30	27.6	26.2	24.8	23.3	21.7	19.7	17.2	13.3	4							
		40	26.2	24.7	23.5	21.9	19.7	17.5	14	5.8								
Shut-off - PSI		131	120.5	109.5	98.5	88	77	60	55	44	33.5	22.5	11.7	0.8				

PMA MODEL	HP	PSI	Depth to Pumping Water Level or Lift in Feet													Shut-off - 361ft		
			0	25	50	75	100	125	150	175	200	225	250	275	300		325	350
S3P-22-19 + L3A-15-2E	1½	0	-	30.9	28	28.5	27.2	26	24.6	23.3	22.2	20.8	19	17	13	4.5		
		10	-	29	28.4	27.3	26	24.8	23.5	22.3	20.8	19.3	17.2	13.8	5.3			
		20	29.8	28.8	27.5	26.2	24.8	23.6	22.3	21	19.3	17.3	13.8	6				
		30	28.8	27.5	26.2	25.2	23.7	22.3	21.2	19.3	17.5	15	7					
		40	27.5	26.4	25.2	23.9	22.2	21.3	19.5	17.8	14.5	8						
Shut-off - PSI		156	146	135	124	113.5	102.5	91.5	81	70	59	48	37	26.5	15.5	4.5		

In view of continuous developments, the information / descriptions / specifications / illustrations are subject to change without notice.

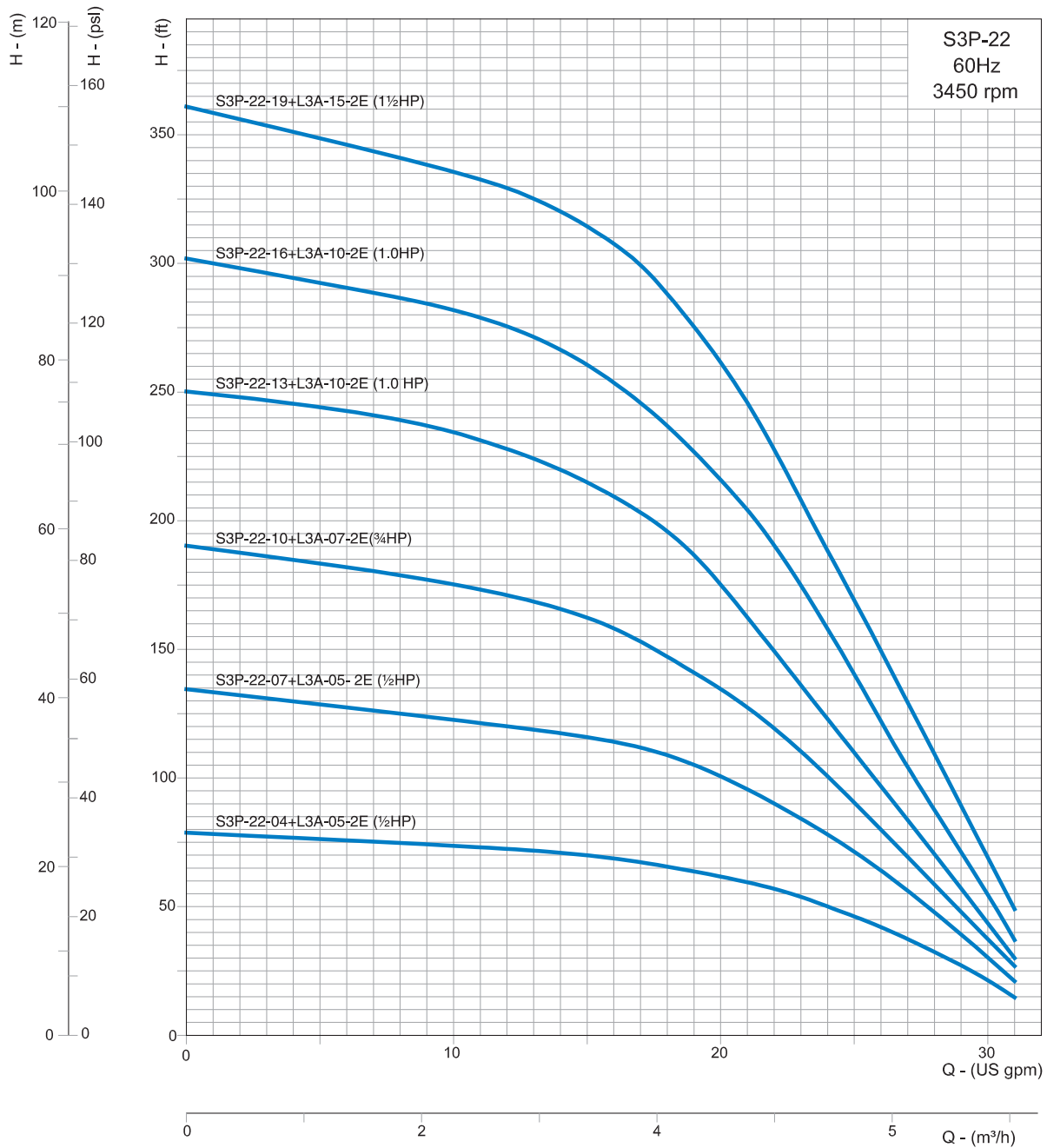
SILVER LINE SERIES

Nominal Diameter : **3"**

Nominal Flow : **22 gpm**

Outlet Size : **1" NPT**

Performance Curves



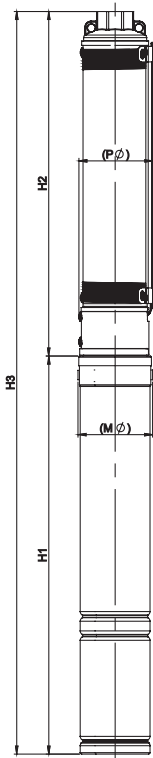
Curve tolerance according to ISO : 9906, Grade - 3B.

In view of continuous developments, the information / descriptions / specifications / illustrations are subject to change without notice.



SILVER LINE SERIES

Dimensions & Weight



Product code & connection type - 2 Wire Motor

PRODUCT CODE	PMA MODEL	HP	ST	Volt	Connection Type (Capacitor inbuilt with motor)
69010	S3P-10-07+L3A-05-2E	½	7	230	PSC
69011	S3P-10-11+L3A-05-2E	½	11	230	PSC
69012	S3P-10-15+L3A-07-2E	¾	15	230	PSC
69013	S3P-10-21+L3A-07-2E	¾	21	230	PSC
69014	S3P-10-24+L3A-10-2E	1	24	230	PSC
69015	S3P-10-27+L3A-15-2E	1½	27	230	PSC

Product code & connection type - 2 Wire Motor

PRODUCT CODE	PMA MODEL	HP	ST	Volt	Connection Type (Capacitor inbuilt with motor)
69016	S3P-22-04+L3A-05-2E	½	4	230	PSC
69017	S3P-22-07+L3A-05-2E	½	7	230	PSC
69018	S3P-22-10+L3A-07-2E	¾	10	230	PSC
69019	S3P-22-13+L3A-10-2E	1	13	230	PSC
69020	S3P-22-16+L3A-10-2E	1	16	230	PSC
69021	S3P-22-19+L3A-15-2E	1½	19	230	PSC

Dimension & Weight details - 2 Wire Motor

PMA MODEL	DISCHARGE (NPT)	PUMP STAGE	HP	PHASE	VOLT	ØD (in)	PUMP END HEIGHT (in)	ASSEMBLED PUMP HEIGHT (in)	PUMP END WEGHT (lbs)	ASSEMBLED PUMP WEIGHT (lbs)	CABLE SIZE (AWG)	CABLE LENGTH (ft)
S3P-10-07+L3A-05-2E	1"	07	½	1	230	2.97	13.9	30.08	3.46	18.05	17	6.5
S3P-10-11+L3A-05-2E	1"	11	½	1	230	2.97	17.48	33.66	4.28	18.87	17	6.5
S3P-10-15+L3A-07-2E	1"	15	¾	1	230	2.97	21.06	38.02	5.22	20.91	17	6.5
S3P-10-21+L3A-07-2E	1"	21	¾	1	230	2.97	27.36	44.32	6.75	22.44	17	6.5
S3P-10-24+L3A-10-2E	1"	24	1	1	230	2.97	30.04	48.58	7.41	25.48	17	6.5
S3P-10-27+L3A-15-2E	1"	27	1½	1	230	2.97	32.72	53.23	8.07	29.05	15	6.5

Dimension & Weight details - 2 Wire Motor

PMA MODEL	DISCHARGE (NPT)	PUMP STAGE	HP	PHASE	VOLT	ØD (in)	PUMP END HEIGHT (in)	ASSEMBLED PUMP HEIGHT (in)	PUMP END WEGHT (lbs)	ASSEMBLED PUMP WEIGHT (lbs)	CABLE SIZE (AWG)	CABLE LENGTH (ft)
S3P-22-04+L3A-05-2E	1"	04	½	1	230	2.97	12.63	28.81	3.27	17.86	17	6.5
S3P-22-07+L3A-05-2E	1"	07	½	1	230	2.97	16.37	33.33	4.09	19.78	17	6.5
S3P-22-10+L3A-07-2E	1"	10	¾	1	230	2.97	21.06	39.6	5.15	23.22	17	6.5
S3P-22-13+L3A-10-2E	1"	13	1	1	230	2.97	24.81	45.32	5.97	26.95	17	6.5
S3P-22-16+L3A-10-2E	1"	16	1	1	230	2.97	28.55	49.06	6.82	27.8	17	6.5
S3P-22-19+L3A-15-2E	1"	19	1½	1	230	2.97	32.3	56.55	7.63	34.33	15	6.5

In view of continuous developments, the information / descriptions / specifications / illustrations are subject to change without notice.

GENERAL INFORMATION

PUMP MOTOR ASSEMBLY - 4" PMA's

C.R.I. 4" PMA's are designed for pumping water from deep wells. All the vital components that come into contact with the liquid are made of stainless steel and food grade engineering thermoplastic. The optimized hydraulic design offers maximum efficiency. Floating impeller design can handle little higher sand than the standard centrifugal pump and reduce the down thrust load that is transferred to motor. The pump is firmly coupled to a 4" 2 wire or 3 wire resin filled encapsulated submersible motor upto 1.5 HP as PMA's for trouble free service. Dynamically balanced rotor and quality bearing ensures vibration and noise free operation and thereby increase the life cycle of pumpset. All mounting dimensions are in accordance with NEMA standards.

Features :

- Rigid and compact design
- Wide hydraulic ranges
- Floating impeller design
- Stainless steel suction inter connector and non-return valve
- Thermal protection and lightening arrestor in single phase motor.

Application :

- Ground water supply to residences and commercial buildings
- Gardens
- Agriculture
- Landscaping
- Pressure boosting
- Livestock watering
- Fountains





SILVER LINE SERIES

Nominal Diameter : **4"**

"R" Series

Technical Specification

Nominal Diameter	4"
Maximum Diameter	3.78"
Power range	½HP - 1½HP - 2Wire, 1Phase
	½HP - 1½HP - 3Wire, 1Phase
Speed	3450 rpm
Versions	Single Phase : 115V & 230V, 60Hz, AC Supply
Discharge range	3 - 30 US gpm
Head range	15 - 343 ft
Outlet size	1¼" NPT
Class of Insulation	F
Ingress Protection	IP 68
Direction of rotation	Counter Clock Wise : Single Phase
Type of Duty	S1 (Continuous)
Thrust load	0.5HP & 0.75HP : 300 lbs 1Phase & 3Phase
	1HP to 1.5HP : 650 lbs 3Phase
Minimum cooling flow along the motor	0.26 ft / sec
Maximum Liquid Temperature	91.4°F
Maximum Starts per hour	Single phase - 20 times
Shaft End	Spline
Mounting Standard	NEMA
Method of Starting	1Phase - PSC (Permanent Split Capacitor) (0.5HP - 1.5HP)
	1Phase - CSCR (Capacitor Start Capacitor Run) (0.5 - 1.5HP)
Cable Lead Out	2+1 / 3+1 Core removable type XLPE Individual leads

Materials of construction (3 Wire) ½ - 1½ HP

Part Name	Material
Stator Shell	SS 304
Bush	Carbon Graphite
Thrust Segment	SS 420
Motor Base	SS 304
Thrust Pad	Carbon Graphite
Diaphragm	NBR
Rubber Sand Guard	NBR
Fasteners	SS 304
Upper Housing Shell	SS 304
'O' Ring / Oil Seal	NBR
Upper Housing	Cast Iron
Shaft	½ - 1 HP SS 410
	1½ HP - EN8D

Materials of construction (2 Wire) ½ - 1½ HP

Part Name	Material
Shaft	SS 431
Oil Seal	NBR
Stator Shell	SS 304
Bush	Carbon Graphite
Thrust Segment	SS 420
Motor Base / Capacitor Plate	Nylon - 6
Thrust Pad	Carbon Graphite
Diaphragm	NBR
Rubber Sand Guard	NBR
Fasteners	SS 304
Upper Housing Shell	SS 304
'O' Ring	NBR
Upper Housing	Cast Iron

SILVER LINE SERIES

Materials of Construction - Pump

PART NAME	NOMINAL DIA. 4"	
	TYPE - P	TYPE - V
CHECK VALVE HOUSING	SS - 304	NORYL
CHECK VALVE	DELFIN	DELFIN
CHECK VALVE SEAT	NBR	NBR
OUTER SHELL	SS 304	SS 304
IMPELLER	DELFIN	DELFIN
DIFFUSER CHAMBER	NORYL	NORYL
CIRCLIP	SS 304	SS 304
INTERMEDIATE BEARING (SLEEVE)	SS 304	SS 304
INTERMEDIATE BEARING (BUSH)	NBR	NBR
SUCTION INTER CONNECTOR	SS 304	NORYL
INLET SCREEN	SS 304	SS 304
PUMP SHAFT HEXAGONAL	SS 304	SS 304
CABLE GUARD	SS 304	SS 304
COUPLING	SS 304	SS 304

Note : Type -V is available only for specific models with 1¼" outlet size.

Delrin is the registered trademark of Dupont. *Noryl is the registered trade mark of GE plastic.

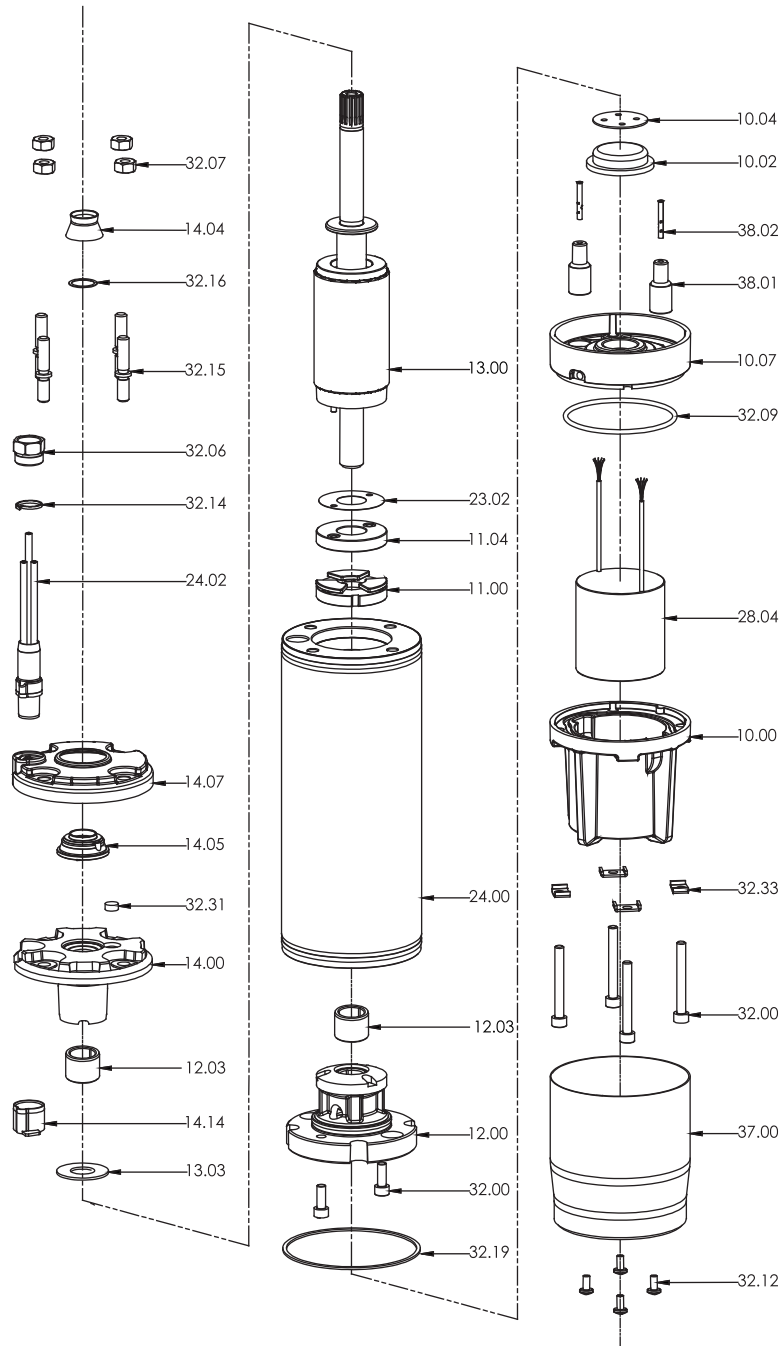
SILVER LINE SERIES



Nominal Diameter : **4"**

"R" Series
(½ to 1½ HP - 2 wire)

Exploded View



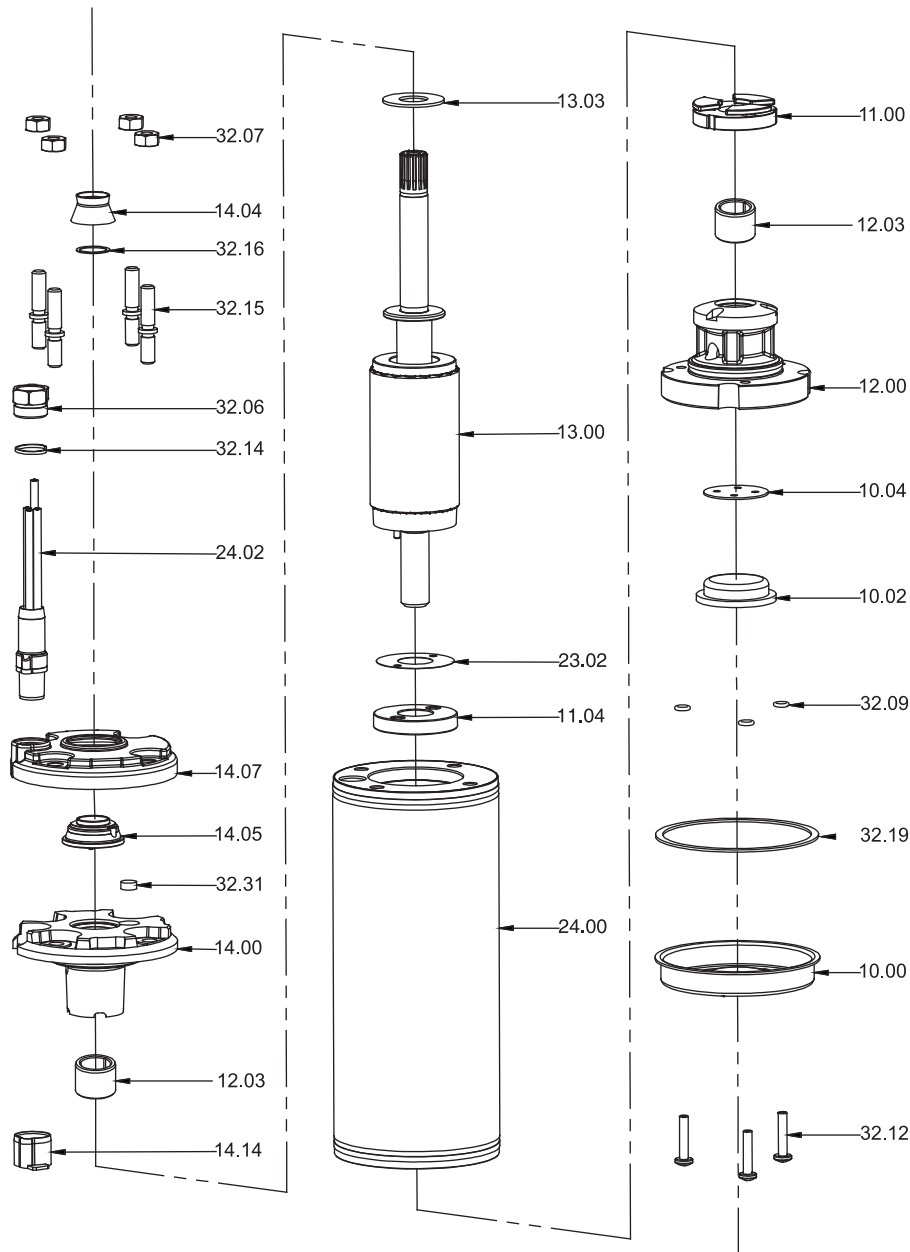
Part Description	Part No.
Screw	32.12
Motor Base Cover	37.00
Allen Bolt	32.00
Cap Washer	32.33
Motor Base	10.00
Capacitor	28.04
O Ring	32.09
Capacitor Plate	10.07
Connector Bush	38.01
Cable Socket Pin	38.02
Diaphragm	10.02
Diaphragm Plate	10.04
Gasket	32.19
Bottom End Bell	12.00
Carbon Bush	12.03
Stator Body	24.00
Thrust Base	11.00
Thrust Pad	11.04
Shim	23.02
Rotor Shaft	13.00
Upthrust Washer	13.03
Cable Plug Sleeve	14.14
Top End Bell	14.00
Valve filter sponge	32.31
Plastic Sand guard	14.05
Top End Bell Cladding	14.07
Cable	24.02
Spring Washer	32.14
Cable Plug Nut	32.06
Stud	32.15
Washer	32.16
Rubber Sand Guard	14.04
Hex Nut	32.07

SILVER LINE SERIES

Nominal Diameter : **4"**

"R" Series
(½ to 1½ HP - 3 wire)

Exploded View



Part No.	Part Name
32.12	Screw
10.00	Motor Base
32.19	Gasket
32.09	O Ring
10.02	Diaphragm
10.04	Diaphragm Plate
12.00	Bottom End Bell
12.03	Carbon Bush
11.00	Thrust Base
24.00	Stator Body
11.04	Thrust Pad
23.02	Shim
13.00	Rotor Shaft
13.03	Upthrust Washer
14.14	Cable Plug Sleeve
14.00	Top End Bell
32.31	Valve filter sponge
14.05	Plastic Sand guard
14.07	Top End Bell Cladding
24.02	Cable
32.14	Spring Washer
32.06	Cable Plug Nut
32.15	Stud
32.16	Washer
14.04	Rubber Sand Guard
32.07	Nut

SILVER LINE SERIES



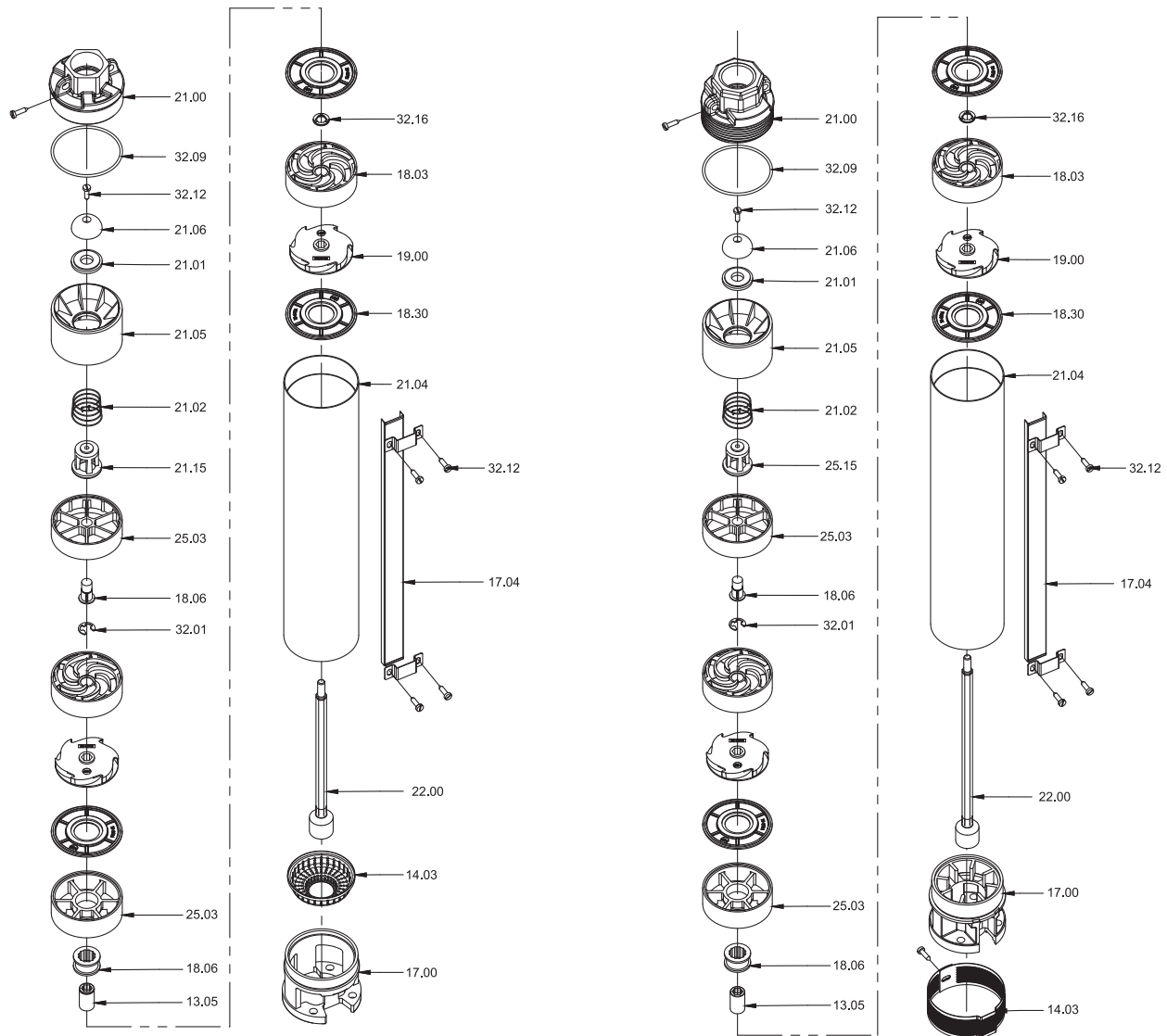
Nominal Diameter : 4"

S4P/V Series
(5 to 20 gpm)

Exploded View

S4P (5 to 20 gpm)

S4V (5 to 20 gpm)



Part No.	Description
13.05	Sleeve
14.03	Strainers
17.00	Suction Inter connector
17.04	Cable Guard
18.03	Diffuser
18.30	Diffuser Plate
18.06	Bush
19.00	Impeller

Part No.	Description
21.00	Pumps Shell
21.01	Valve Disc
21.02	Valve Bracket
21.15	Pump Shaft
21.04	Valve Housing
21.06	Valve Seat
21.05	Valve Spring
22.00	Valve Cone

Part No.	Description
22.01	Coupling
25.03	Bracket
32.06	Lock Nut
32.09	O-ring
32.12	Screw
32.16	Washer
32.01	Circlip

In view of continuous developments, the information / descriptions / specifications / illustrations are subject to change without notice.

SILVER LINE SERIES

Nominal Diameter : **4"**

Nominal Flow : **5 gpm**

Outlet Size : **1 1/4" NPT**

Performance Table

PMA MODEL	HP	PSI	Depth to Pumping Water Level or Lift in Feet																					
			0	20	40	60	80	100	120	140	160	180	200	220	240	260	280	300	320	340	360	380	400	
S4P-05-14 + R4AS-05-1E	1/2	0							7	6.7	6.7	6.4	6	5.7	5.3	4.8	4	3.8	2.8	2				
		20				7.2	6.9	6.6	6.2	6	6	5.6	5.1	4.7	4.1	3.7	2.9	1.8						
		30				6.8	6.5	6.1	5.9	5.5	5.5	5.1	4.9	3.9	3.7	2.7	1.5							
		40			7.1	6.5	6.2	5.8	5.4	5	5	4.6	3.9	3.4	2.5									
S4P-05-14 + R4AS-05-2E	1/2	50		7	6.7	6.1	5.7	5.4	4.9	4.5	4.5	3.9	3.3	2.5	0.6									
		60	7	6.7	6.4	5.7	5.3	4.9	4.1	3.9	3.9	3.5	2.2											
		70	6.7	6.3	6	5.3	4.7	4.3	3.8	3	3	1.9												
		80	6.1	5.9	5.6	4.7	3.9	3.7	3	1.8	1.8													
Shut-off - PSI			157	148	139	122	113	104	96	87	87	78	70	61	52	44	35	26	17	9				

Shut-off 360 ft

PMA MODEL	HP	PSI	Depth to Pumping Water Level or Lift in Feet																														
			0	20	40	60	80	100	120	140	160	180	200	220	240	260	280	300	320	340	360	380	400	450	500	550	600	650	700	750	800		
S4P-05-19 + R4AS-07-1E	3/4	0										7	6.7	6.5	6.3	6.1	5.8	5.6	5.3	5	4.8	4.5	4.2	3.9	3.3								
		20									6.9	6.7	6.5	6.3	6.1	5.8	5.6	5.3	5	4.8	4.5	4.2	3.9	3.3									
		30							7.1	6.8	6.7	6.5	6.3	6.1	5.9	5.8	5.3	5.1	4.8	4.3	4.1	3.9	3.2	2.3									
		40					7.1	6.1	6.6	6.4	6.1	5.9	5.7	5.5	5.3	4.9	4.7	4.3	4	3.7	2.9	2											
S4P-05-19 + R4AS-07-2E	3/4	50				7.1	6.8	6.7	6.4	6.1	6	5.7	5.5	5.3	4.9	4.7	4.3	4	3.7	2.9	1.9												
		60			7.1	6.7	6.5	6.4	6.1	5.8	5.7	5.5	5.3	4.9	4.7	4.3	4	3.9	2.8														
		70		7	6.8	6.5	6.3	6.1	5.8	5.6	5.4	5.1	4.9	4.6	4.2	3.9	3.5	2.5															
		80	6.9	6.7	6.5	6.3	6.1	5.9	5.6	5.3	5.1	4.9	4.5	4.3	3.9	3.3	2.5																
Shut-off - PSI			217	209	200	191	183	174	165	157	148	139	130	122	113	104	95.7	87	78.3	69.6	60.9	52.2	43.5	21.7									

Shut-off 500 ft

PMA MODEL	HP	PSI	Depth to Pumping Water Level or Lift in Feet																														
			0	20	40	60	80	100	120	140	160	180	200	220	240	260	280	300	320	340	360	380	400	450	500	550	600	650	700	750	800		
S4P-05-22 + R4AS-10-1E	1	0											7.4	7.2	7	6.8	6.5	6.4	6.2	5.9	5.7	5.3	5.2	4.6	3.8	2.5							
		20									7.3	7.1	6.9	6.7	6.4	6.3	6.2	5.9	5.7	5.3	5.1	4.9	4.7	3.9	2.7								
		30							7.4	7.3	7.1	6.9	6.7	6.4	6.3	6.1	5.9	5.6	5.3	5.1	4.9	4.6	4.3	3.4	1.9								
		40					7.4	7.3	7.1	6.9	6.7	6.4	6.3	6.1	5.8	5.6	5.3	5.1	4.9	4.6	4.3	3.9	2.7										
S4P-05-22 + R4AS-10-2E	1	50				7.4	7.3	7.1	6.9	6.6	6.4	6.3	6	5.8	5.6	5.3	5.1	4.9	4.5	4.3	3.9	3.5	2.1										
		60			7.4	7.2	7	6.8	6.5	6.4	6.2	6	5.7	5.4	5.3	5.1	4.8	4.5	4.4	3.9	3.5	3.1											
		70		7.4	7.2	6.9	6.8	6.5	6.4	6.2	5.9	5.7	5.5	5.2	5	4.7	4.5	4.2	3.8	3.4	2.9	2.1											
		80	7.4	7.3	7	6.7	6.5	6.3	6.1	5.9	5.7	5.5	5.2	4.9	4.7	4.4	3.9	3.7	3.4	2.8	2												
Shut-off - PSI			259	250	241	233	224	215	207	198	189	180	172	163	154	146	137	128	120	111	102	93.5	84.8	63	41.3	19.6							

Shut-off 596 ft

PMA MODEL	HP	PSI	Depth to Pumping Water Level or Lift in Feet																															
			0	20	40	60	80	100	120	140	160	180	200	220	240	260	280	300	320	340	360	380	400	450	500	550	600	650	700	750	800			
S4P-05-30 + R4AS-15-2E	1 1/2	0														7.3	7.2	7.1	6.9	6.8	6.7	6.5	6.4	6.1	5.7	5.3	4.8	4.2	3.5	2.3				
		20														7.3	7.1	7	6.9	6.7	6.6	6.5	6.4	6.3	6.1	5.7	5.3	4.8	4.3	3.6	2.4			
		30														7.3	7.1	7	6.9	6.7	6.6	6.5	6.3	6.2	6	5.9	5.5	5.1	4.5	4	3.2	1.2		
		40												7.3	7.1	7	6.9	6.7	6.6	6.5	6.3	6.2	6.1	5.9	5.7	5.3	4.8	4.3	3.7	2.5				
S4P-05-30 + R4AS-15-3E	1 1/2	50							7.5	7.3	7.2	7.1	6.9	5.9	6.7	6.6	6.5	6.3	6.2	6	5.9	5.7	5.5	5.1	4.6	4	3.3	1.6						
		60							7.3	7.2	7.1	6.9	6.8	6.6	6.5	6.4	6.1	6	5.9	5.8	5.7	5.5	5.4	4.9	4.3	3.6	2.6							
		70						7.3	7.2	7.1	6.9	6.8	6.7	6.5	6.4	6.3	6.2	5.9	5.7	5.6	5.5	5.3	5.1	4.6	4.2	3.3	1.7							
		80						7.3	7.1	7	6.9	6.8	6.7	6.5	6.4	6.3	6.1	5.9	5.7	5.6	5.5	5.3	5.1	4.9	4.4	3.6	2.9							
Shut-off - PSI			343	335	326	317	309	300	291	283	274	265	257	248	239	230	222	213	204	196	187	178	170	148	126	104	83	60.9	39.1	17.4				

Shut-off 790 ft

In view of continuous developments, the information / descriptions / specifications / illustrations are subject to change without notice.



SILVER LINE SERIES

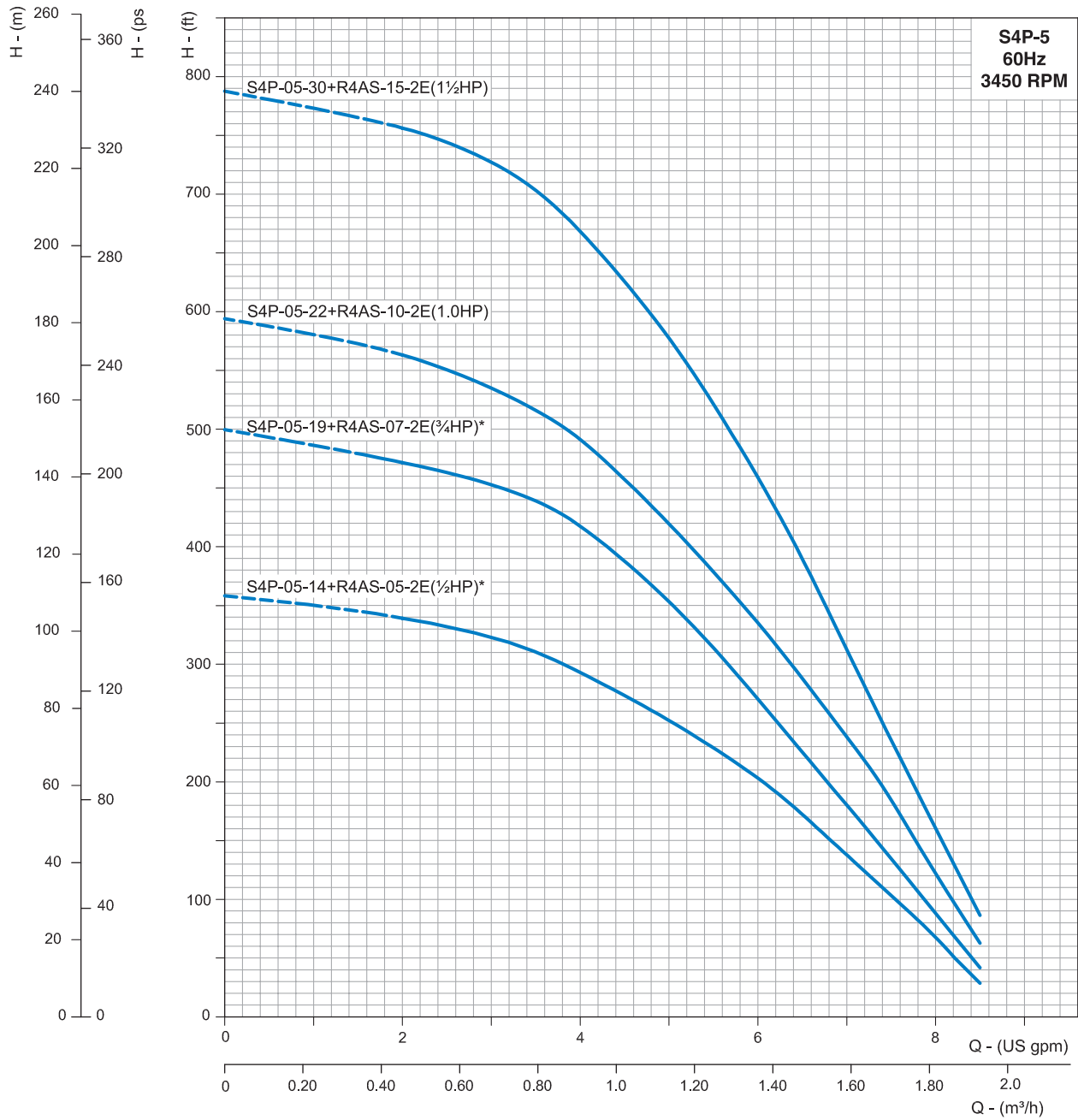
Nominal Diameter : **4"**

Nominal Flow : **5 gpm**

Outlet Size : **1 1/4" NPT**

Performance Curves

Flow Range : 2 - 8.5 gpm



* Marked models are also available in Type-V construction.
Curve tolerance according to ISO : 9906, Grade - 3B.

In view of continuous developments, the information / descriptions / specifications / illustrations are subject to change without notice.

SILVER LINE SERIES

Nominal Diameter : **4"**Nominal Flow : **5 gpm**Outlet Size : **1¼" NPT**

Product code & connection type - 2 Wire Motor

PRODUCT CODE	PMA MODEL	HP	ST	Volt	Connection Type (Capacitor inbuilt with motor)
65225	S4P-05-14+R4AS-05-2E	½	14	230	PSC
65226	S4P-05-19+R4AS-07-2E	¾	19	230	PSC
65227	S4P-05-22+R4AS-10-2E	1	22	230	PSC
65228	S4P-05-30+R4AS-15-2E	1½	30	230	PSC

Product code & connection type - 3 Wire Motor

PRODUCT CODE	PMA MODEL	HP	ST	Volt	Connection Type
65244	S4P-05-14+R4AS-05-1E	½	14	230	CSIR
65245	S4P-05-19+R4AS-07-1E	¾	19	230	CSIR
65246	S4P-05-22+R4AS-10-1E	1	22	230	CSIR
65247	S4P-05-30+R4AS-15-3E	1½	30	230	CSCR

Dimension & Weight details - 2 Wire Motor

PMA MODEL	DISCHARGE (NPT)	PUMP STAGE	HP	PHASE	VOLT	ØD (in)	PUMP END HEIGHT (in)	ASSEMBLED PUMP HEIGHT (in)	PUMP END WEIGHT (lbs)	ASSEMBLED PUMP WEIGHT (lbs)	CABLE SIZE (AWG)	CABLE LENGTH (ft)
P-Series												
S4P-05-14+R4AS-05-2E	1¼"	14	½	1	230	3.9	18.43	32.09	16.76	37.92	14	4.9
S4P-05-19+R4AS-07-2E	1¼"	19	¾	1	230	3.9	23.31	37.95	18.74	42.51	14	4.9
S4P-05-22+R4AS-10-2E	1¼"	22	1	1	230	3.9	25.51	41.14	6.17	32.34	14	4.9
S4P-05-30+R4AS-15-2E	1¼"	30	1½	1	230	3.9	32.60	49.21	7.72	36.68	14	4.9
V-Series												
S4V-05-14+R4AS-05-2E	1¼"	14	½	1	230	3.9	19.41	33.07	4.85	26.01	14	4.9
S4V-05-19+R4AS-07-2E	1¼"	19	¾	1	230	3.9	24.25	38.90	5.95	29.72	14	4.9

Dimension & Weight details - 3 Wire Motor

PMA MODEL	DISCHARGE (NPT)	PUMP STAGE	HP	PHASE	VOLT	ØD (in)	PUMP END HEIGHT (in)	ASSEMBLED PUMP HEIGHT (in)	PUMP END WEIGHT (lbs)	ASSEMBLED PUMP WEIGHT (lbs)	CONTROL BOX		CABLE SIZE (AWG)	CABLE LENGTH (ft)
											CODE	WEIGHT (lbs)		
P-Series														
S4P-5-14+R4AS-05-1R	1¼"	14	½	1	115	3.9	18.43	28.88	16.76	37.30	156482	3.04	14	4.9
S4P-5-14+R4AS-05-1E	1¼"	14	½	1	230	3.9	18.43	28.88	16.76	37.30	160851	3.08	14	4.9
S4P-5-19+R4AS-07-1E	1¼"	19	¾	1	230	3.9	23.31	24.74	18.74	41.71	160852	3.3	14	4.9
S4P-5-22+R4AS-18-1E	1¼"	22	1	1	230	3.9	25.51	37.93	6.17	31.92	160853	3.55	14	4.9
S4P-5-30+R4AS-15-3E	1¼"	30	1½	1	230	3.9	32.60	45.61	7.72	35.10	160854	6.4	14	4.9
V-Series														
S4V-5-14+R4AS-05-1R	1¼"	14	½	1	115	3.9	18.43	29.86	16.76	25.40	156482	3.04	14	4.9
S4V-5-14+R4AS-05-1E	1¼"	14	½	1	230	3.9	19.41	29.86	4.85	25.40	160851	3.08	14	4.9
S4V-5-19+R4AS-07-1E	1¼"	19	¾	1	230	3.9	24.25	35.69	5.95	28.92	160852	3.3	14	4.9



SILVER LINE SERIES

Nominal Diameter : **4"**

Nominal Flow : **7 gpm**

Outlet Size : **1 1/4" NPT**

Performance Table

PMA MODEL	HP	PSI	Depth to Pumping Water Level or Lift in Feet																													
			0	20	40	60	80	100	120	140	160	180	200	220	240	260	280	300	320	340	360	380	400	420	440	460	480	500	520	540	560	
S4P-07-11 + R4AS-05-1E	1/2	0			12.6	12.2	11.8	11.4	10.9	10.4	10	9.4	8.9	8.6	7.6	6.8	5.8	4.8	3.2													
		20	12.4	12.1	11.6	11.2	10.8	10.3	9.8	9.3	8.8	8.2	7.4	6.6	5.6	4.4	2.6															
		30	12.2	11.6	11.2	10.7	10.3	9.8	9	8.6	8	7.2	6.4	5.4	4.2	2.2																
		40	11.6	11.1	10.6	10.2	9.7	9.2	8.6	7.9	7	6.2	5.2	3.9	2																	
S4P-07-11 + R4AS-05-2E	1/2	50	11	10.6	10.1	9.6	9	8.4	7.8	7	6	5	3.6																			
		60	10.5	10	9.6	9	8.4	7.6	6.8	5.8	4.8	3.4																				
		70	10	9.4	8.9	8.2	7.5	6.8	5.8	4.7	3.2																					
Shut off - PSI		80	9.4	8.8	8.2	7.6	6.8	5.8	4.6	2.5																						
			148	139	130	122	113	104	95.7	87	78.3	69.6	60.9	52.2	43.5	34.8	26.1	17.4	8.7													

Shut-off 338 ft

PMA MODEL	HP	PSI	Depth to Pumping Water Level or Lift in Feet																													
			0	20	40	60	80	100	120	140	160	180	200	220	240	260	280	300	320	340	360	380	400	420	440	460	480	500	520	540	560	
S4P-07-15 + R4AS-07-1E	3/4	0			12.8	12.5	12.2	11.8	11.5	11.2	10.8	10.4	10.1	9.6	9.3	8.9	8.5	8	7.6	7	6.4	5.7	5	4	2							
		20		12.8	12.4	12.1	11.8	11.4	11.1	10.7	10.4	10	9.6	9.2	8.8	8.4	7.9	7.4	6.8	6.2	5.6	4.8	3.6									
		30	12.7	12.4	12.1	11.7	11.4	11	10.7	10.4	10	9.6	9.2	8.8	8.3	7.9	7.4	6.8	6.1	5.4	4.4	3.2										
		40	12.4	12	11.7	11.3	11	10.6	10.2	9.8	9.5	9	8.7	8.2	7.8	7.2	6.6	6	5.2	4.4	2.8											
S4P-07-15 + R4AS-07-2E	3/4	50	12	11.6	11.3	10.9	10.6	10.2	9.8	9.4	9	8.6	8.2	7.8	7.2	6.6	6	5.2	4.2	2.6												
		60	11.8	11.2	10.9	10.5	10.2	9.8	9.4	9	8.6	8	7.6	7	6.7	5.8	5	4	2													
		70	11.2	10.8	10.4	10	9.6	9.3	8.9	8.5	8	7.5	7	6.4	5.6	5	4	2														
Shut off - PSI		80	10.8	10.4	10	9.7	9.2	8.8	8.4	8	7.4	6.9	6.2	5.6	4.8	3.8																
			204	196	187	178	170	161	152	143	132	126	117	109	100	91.3	82.6	73.9	65.2	56.5	47.8	39.1	30.4	21.7	13	4.35						

Shut-off 470 ft

PMA MODEL	HP	PSI	Depth to Pumping Water Level or Lift in Feet																													
			0	20	40	60	80	100	120	140	160	180	200	220	240	260	280	300	320	340	360	380	400	420	440	460	480	500	520	540	560	
S4P-07-18 + R4AS-10-1E	1	0				12.8	12.6	12.4	12	11.8	11.5	11.3	11	10.7	10.4	10	9.8	9.4	9.1	8.8	8.4	8	7.6	7	6.6	6	5.3	4.4	3			
		20			12.8	12.5	12.2	12	11.7	11.5	11.2	10.9	10.6	10.3	10	9.7	9.3	9	8.6	8.2	7.8	7.4	7	6.4	5.8	5.2	4.2	2.8				
		30	12.7	12.5	12.2	12	11.7	11.3	11.1	10.8	10.6	10.2	10	9.6	9.3	9	8.6	8.2	7.8	7.4	6.8	6.3	5.4	5	3.8	2.4						
		40	12.7	12.4	12.2	11.9	11.6	11.4	11.1	10.8	10.5	10.2	9.8	9.5	9.2	8.9	8.5	8.1	7.7	7.2	6.8	6.2	5.6	4.8	3.8	2.2						
S4P-07-18 + R4AS-10-2E	1	50	12.4	12.1	11.9	11.6	11.3	11.1	10.8	10.5	10.1	9.8	9.5	9.2	8.8	8.5	8	7.6	7.2	6.7	6.2	5.4	4.6	3.6	2							
		60	12.1	11.8	11.6	11.3	11	10.7	10.4	10.1	9.8	9.4	9.1	8.8	8.4	8	7.6	7	6.6	6	5.3	4.4	3.4									
		70	11.8	11.5	11.3	11	10.6	10.4	10	9.8	9.4	9.1	8.7	8.4	8	7.5	7	6.5	6	5.2	4.4	3.2										
Shut off - PSI		80	10.8	10.4	10.1	9.6	9.2	8.8	8.5	8	7.5	6.9	6.2	5.6	5	3.8	2															
			248	239	230	222	213	204	196	187	178	170	161	152	143	135	126	117	109	100	91.3	82.6	73.9	65.2	56.5	47.8	39.1	30.4	21.7	13		

Shut-off 570 ft

PMA MODEL	HP	PSI	Depth to Pumping Water Level or Lift in Feet																														
			0	20	40	60	80	100	120	140	160	180	200	220	240	260	280	300	320	340	360	380	400	420	440	460	480	500	550	600	650	700	
S4P-07-22 + R4AS-15-2E	1 1/2	0					13	12.8	12.6	12.4	12.2	12	11.7	11.5	11.3	11	10.8	10.6	10.4	10.1	9.8	9.4	9.2	9.4	9.2	8.4	8.1	7.8	6.9	5.8	4.2		
		20			12.9	12.7	12.5	12.3	12.1	11.9	11.7	11.5	11.2	11	10.7	10.5	10.3	10	9.7	9.4	9.2	8.9	8.6	8.3	8.6	7.7	7.3	7	6	5.2	1.2		
		30	12.9	12.9	12.7	12.5	12.3	12	11.8	11.6	11.4	11.2	11	10.7	10.5	10.2	10	9.7	9.4	9.2	8.9	8.6	8.2	8	8.2	7.3	7	6.1	4.4	3.2			
		40	12.8	12.6	12.5	12.2	12	11.8	11.6	11.4	11.1	10.9	10.7	10.4	10.2	10	9.7	9.4	9.1	8.8	8.5	8.2	7.9	7.6	7.9	6.9	6.5	6	4.6				
S4P-07-22 + R4AS-15-3E	1 1/2	50	12.6	12.4	12.2	12	11.8	11.6	11.3	11.1	10.9	10.6	10.4	10.2	9.9	9.6	9.3	9.1	8.8	8.4	8.2	7.9	7.5	7.2	7.5	6.4	6	5.4	3.6				
		60	12.4	12.4	12	11.7	11.5	11.3	11	10.8	10.6	10.4	10.2	9.9	9.6	9.3	9	8.7	8.4	8.1	7.8	7.4	7.1	6.8	7.1	5.9	5.4	4.8	2				
		70	12.1	11.9	11.7	11.5	11.3	11	10.8	10.6	10.3	10.1	9.8	9.6	9.2	9	8.7	8.4	8.1	7.8	7.4	7.1	6.8	6.3	6.8	5.3	4.6	3.6					
Shut off - PSI		80	11.9	11.7	11.5	11.2	11	10.8	10.6	10.3	10.1	98	9.5	9.3	9	8.6	8.4	8	7.8	7.4	7	6.6	6.2	5.8	6.2	4.6	3.6	2.4					
			305	298	289	280	272	263	254	246	237	228	220	211	202	193	185	176	167	159	150	141	133	124	133	107	97.8	89.1	67.4	45.7	23.9		

Shut-off 704 ft

SILVER LINE SERIES

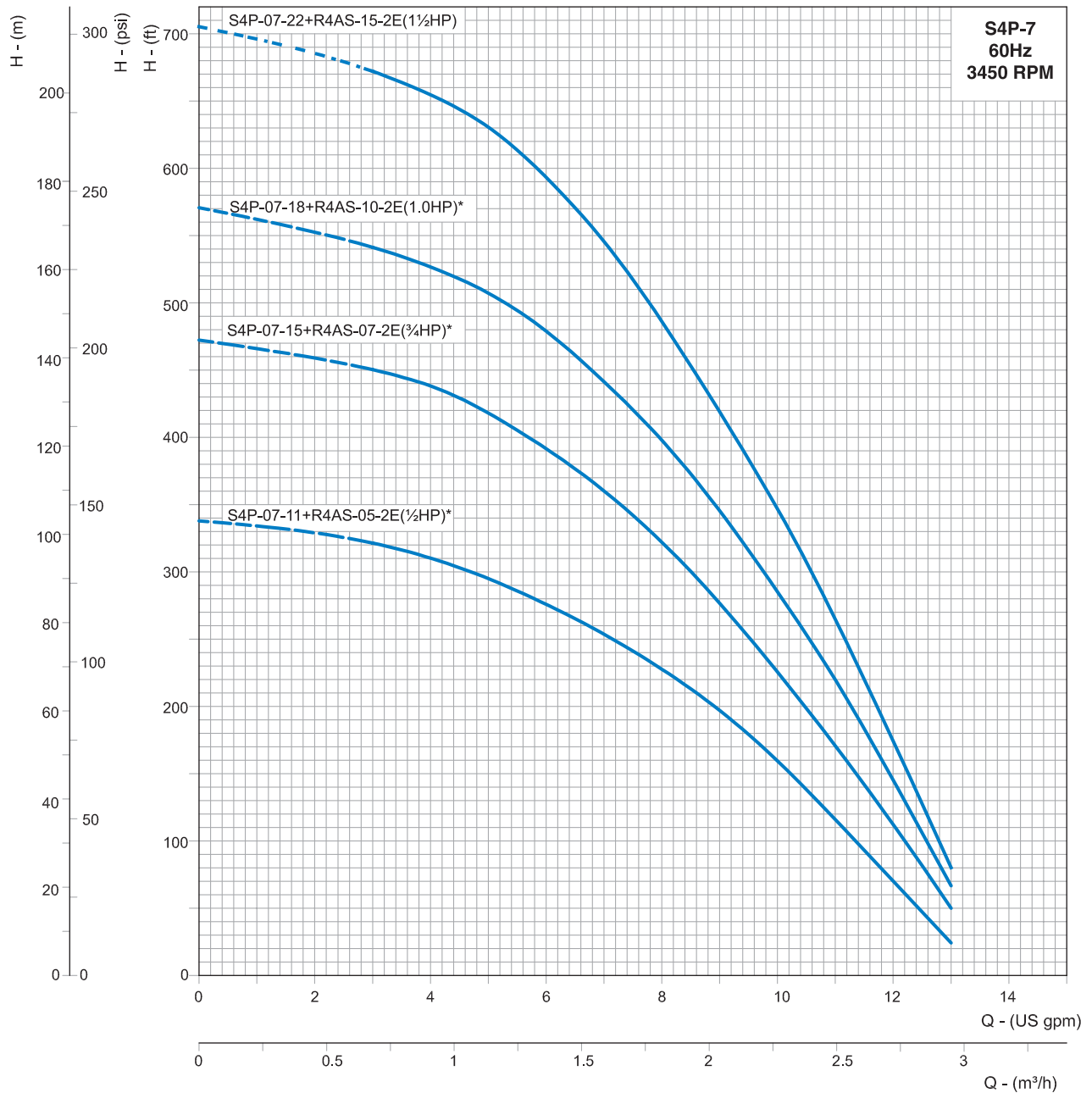
Nominal Diameter : **4"**

Nominal Flow : **7 gpm**

Outlet Size : **1 1/4" NPT**

Performance Curves

Flow Range : 3 - 13 gpm



* Marked models are also available in Type-V construction.
Curve tolerance according to ISO : 9906, Grade - 3B.

In view of continuous developments, the information / descriptions / specifications / illustrations are subject to change without notice.



SILVER LINE SERIES

Nominal Diameter : **4"**

Nominal Flow : **7 gpm**

Outlet Size : **1 1/4" NPT**

Product code & connection type - 2 Wire Motor

PRODUCT CODE	PMA MODEL	HP	ST	Volt	Connection Type (Capacitor inbuilt with motor)
65229	S4P-07-11+R4AS-05-2E	1/2	11	230	PSC
65230	S4P-07-15+R4AS-07-2E	3/4	15	230	PSC
65231	S4P-07-18+R4AS-10-2E	1	18	230	PSC
65232	S4P-07-22+R4AS-15-2E	1 1/2	22	230	PSC

Product code & connection type - 3 Wire Motor

PRODUCT CODE	PMA MODEL	HP	ST	Volt	Connection Type
65248	S4P-07-11+R4AS-05-1E	1/2	11	230	CSIR
65249	S4P-07-15+R4AS-07-1E	3/4	15	230	CSIR
65250	S4P-07-18+R4AS-10-1E	1	18	230	CSIR
65251	S4P-07-22+R4AS-15-3E	1 1/2	22	230	CSCR

Dimension & Weight details - 2 Wire Motor

PMA MODEL	DISCHARGE (NPT)	PUMP STAGE	HP	PHASE	VOLT	ØD (in)	PUMP END HEIGHT (in)	ASSEMBLED PUMP HEIGHT (in)	PUMP END WEIGHT (lbs)	ASSEMBLED PUMP WEIGHT (lbs)	CABLE SIZE (AWG)	CABLE LENGTH (ft)
P-Series												
S4P-07-11+R4AS-05-2E	1 1/4"	11	1/2	1	230	3.9	17.60	31.26	8.82	29.98	14	4.9
S4P-07-15+R4AS-07-2E	1 1/4"	15	3/4	1	230	3.9	21.10	35.75	6.61	30.38	14	4.9
S4P-07-18+R4AS-10-2E	1 1/4"	18	1	1	230	3.9	24.84	40.47	7.28	33.44	14	4.9
S4P-07-22+R4AS-15-2E	1 1/4"	22	1 1/2	1	230	3.9	28.31	44.92	7.79	36.91	14	4.9
V-Series												
S4V-07-15+R4AS-05-2E	1 1/4"	15	1/2	1	230	3.9	22.05	36.69	7.28	31.04	14	4.9
S4V-07-18+R4AS-07-2E	1 1/4"	18	3/4	1	230	3.9	25.79	41.42	8.16	34.33	14	4.9

Dimension & Weight details - 3 Wire Motor

PMA MODEL	DISCHARGE (NPT)	PUMP STAGE	HP	PHASE	VOLT	ØD (in)	PUMP END HEIGHT (in)	ASSEMBLED PUMP HEIGHT (in)	PUMP END WEIGHT (lbs)	ASSEMBLED PUMP WEIGHT (lbs)	CONTROL BOX		CABLE SIZE (AWG)	CABLE LENGTH (ft)
											CODE	WEIGHT (lbs)		
P-Series														
S4P-07-11+R4AS-05-1R	1 1/4"	11	1/2	1	115	0.5	17.6	28.05	8.82	29.37	156482	3.04	14	4.9
S4P-07-11+R4AS-05-1E	1 1/4"	11	1/2	1	230	3.9	17.60	28.05	8.82	29.37	160851	3.08	14	4.9
S4P-07-15+R4AS-07-1E	1 1/4"	15	3/4	1	230	3.9	21.10	32.54	6.61	29.59	160852	3.3	14	4.9
S4P-07-18+R4AS-10-1E	1 1/4"	18	1	1	230	3.9	24.84	37.25	7.28	33.03	160853	3.55	14	4.9
S4P-07-22+R4AS-15-3E	1 1/4"	22	1 1/2	1	230	3.9	28.31	41.32	7.94	35.32	160854	6.4	14	4.9
V-Series														
S4V-07-11+R4AS-05-1R	1 1/4"	11	1/2	1	115	3.9	18.58	29.04	8.82	26.94	156482	3.04	14	4.9
S4V-07-11+R4AS-05-1E	1 1/4"	11	1/2	1	230	3.9	18.58	29.04	6.39	26.94	160851	3.08	14	4.9
S4V-07-15+R4AS-07-1E	1 1/4"	15	3/4	1	230	3.9	22.05	33.48	7.28	30.25	160852	3.3	14	4.9
S4V-07-18+R4AS-10-1E	1 1/4"	18	1	1	230	3.9	25.79	38.21	8.16	33.91	160853	3.55	14	4.9

SILVER LINE SERIES

Nominal Diameter : **4"**

Nominal Flow : **10 gpm**

Outlet Size : **1¼" NPT**

Performance Table

PMA MODEL	HP	PSI	Depth to Pump Water Level or Lift in Feet																											
			0	20	40	60	80	100	120	140	160	180	200	220	240	260	280	300	320	340	360	380	400	420	440	460	480	500	520	540
S4P-10-08 + R4AS-05-1E	½	0						15	14	13	12	10.5	9	7.5	5															
		20			14.7	14	12.5	11	10	9	7.4	3.5																		
		30			14.5	13.5	12.5	11	10	8.5	6.5	3																		
		40		14.5	12.5	11.5	10.5	9.4	8	7	3																			
S4P-10-08 + R4AS-05-2E	½	50	14.3	13.3	12	11	9.5	8	6	3																				
		60	13.3	12	10.5	9.3	6	5.5	3																					
		70	12	10.5	9	7.5	5																							
		80	10.3	8.7	4.5	4.5																								
Shut off - PSI			113	104	95.7	87	78.3	69.6	60.9	52.2	43.5	34.8	26.1	17.4	8.7															

Shut-off 260 ft

PMA MODEL	HP	PSI	Depth to Pump Water Level or Lift in Feet																											
			0	20	40	60	80	100	120	140	160	180	200	220	240	260	280	300	320	340	360	380	400	420	440	460	480	500	520	540
S4P-10-11 + R4AS-07-1E	¾	0						15.5	15	14.5	13.8	13	12.3	11	10	9	8	6.5												
		20					14.8	14.3	13.5	12.5	11.5	10.5	9.5	8.7	7.5	5	2.5													
		30				15.5	14.8	14	13.3	12.4	11.5	10.5	9.5	8	7	5.5	3													
		40			15.5	14.8	14.3	13	12.5	12	10.5	9.5	8.5	7	3															
S4P-10-11 + R4AS-07-2E	¾	50	16	15.3	14.7	14	13	12.5	11.5	10.5	9.3	8	7	5																
		60	15.2	14.7	14	13	12.3	11.5	10.5	9	8	7	4.5																	
		70	14.5	13.7	13	12	11	10	9	7.5	6.5	4																		
		80	13.7	13	12	11.2	10	9	8	6.5	3.5																			
Shut off - PSI			157	148	139	130	122	113	104	95.7	87	78.3	69.6	60.9	52.2	43.5	34.8	26.1	17.4											

Shut-off 360 ft

PMA MODEL	HP	PSI	Depth to Pump Water Level or Lift in Feet																											
			0	20	40	60	80	100	120	140	160	180	200	220	240	260	280	300	320	340	360	380	400	420	440	460	480	500	520	540
S4P-10-13 + R4AS-10-1E	1	0							16	15.5	15	14.3	13.7	13	12.5	11.5	10.8	10	9	8	7	5.5	3.5							
		20						16.2	15.7	15.3	14.5	14	13.7	12.7	12	11.4	10.7	9.7	9	7.7	6.5	5.5								
		30				16.3	15.7	15	14.5	14	13.5	12.7	12	11.3	10.5	9.5	8.5	7.5	6.5	5										
		40			16.3	15.7	15.3	14.5	14	13.5	12.7	12	11.5	10.5	9.5	8.5	7.5	6.5	5											
S4P-10-13 + R4AS-10-2E	1	50		16.3	15.7	15.2	14.5	14	13.5	12.7	12	11	10.5	9.5	8.5	7.5	6	4.5												
		60	16	15.7	15	14.5	14	13.2	12.5	11.7	11	10.4	9.5	8.5	7.5	6	5													
		70	15.5	15	14.5	13.8	13	12.3	11.5	11.7	10	9	8	7	5.5	3.5														
		80	14.8	14.3	13.7	13	12.5	11.5	10.7	10	9.3	8	7	5.5	3.5															
Shut Off - PSI			191	183	174	165	157	148	139	130	122	113	104	95.7	87	78.3	69.6	60.9	52.2	43.5	34.8	26.1	17.4	8.7						

Shut-off 440 ft

PMA MODEL	HP	PSI	Depth to Pump Water Level or Lift in Feet																											
			0	20	40	60	80	100	120	140	160	180	200	220	240	260	280	300	320	340	360	380	400	420	440	460	480	500	520	540
S4P-10-17 + R4AS-15-2E	1½	0										16.3	15.8	15.5	15	14.5	14.2	13.7	13.3	12.7	12.4	11.5	11	10.5	9.8	9	8	7	6	4.5
		20									16.2	15.7	15.2	14.8	14.5	14	13.7	13.3	12.3	12	11.5	11	10.3	9.5	8.7	7.7	7	5.5	4	
		30								16	15.7	15.2	14.7	14.2	13.3	13.5	13	12.5	12	11.3	10.7	10	9.5	8.5	7.5	6.5	5.5	3.5		
		40						16	15.7	15.2	14.7	14.4	14	13.5	13	12.5	12	11.5	10.7	10.2	9.5	8.7	7.8	6.5	5.5	3.5				
S4P-10-17 + R4AS-15-3E	1½	50					16	15.7	15.3	14.7	14.3	14	13.5	13	12.5	12	11.5	10.7	10	9.5	8.5	7.5	6.5	5.5	3.5					
		60			16.3	15.8	15.5	15.2	14.7	14.2	13.7	13.3	13	12.5	11.8	11.3	10.7	10	9.5	8.5	7.5	6.5	5	3.5						
		70		16.4	15.8	15.5	15	14.7	14.2	13.7	13.3	12.7	12.3	11.7	11	10.5	9.8	9	8	7	6	4.5								
		80	16	15.7	15.3	15	14.5	14	13.7	13.4	12.5	12	11.5	11	10.5	9.5	9	8	7	6	4									
Shut Off - PSI			252	243	235	226	217	209	200	191	183	174	165	157	148	139	130	122	113	104	95.7	87	78.3	69.6	60.9	52.2	43.5	34.8	26.1	17.4

Shut-off 580 ft



SILVER LINE SERIES

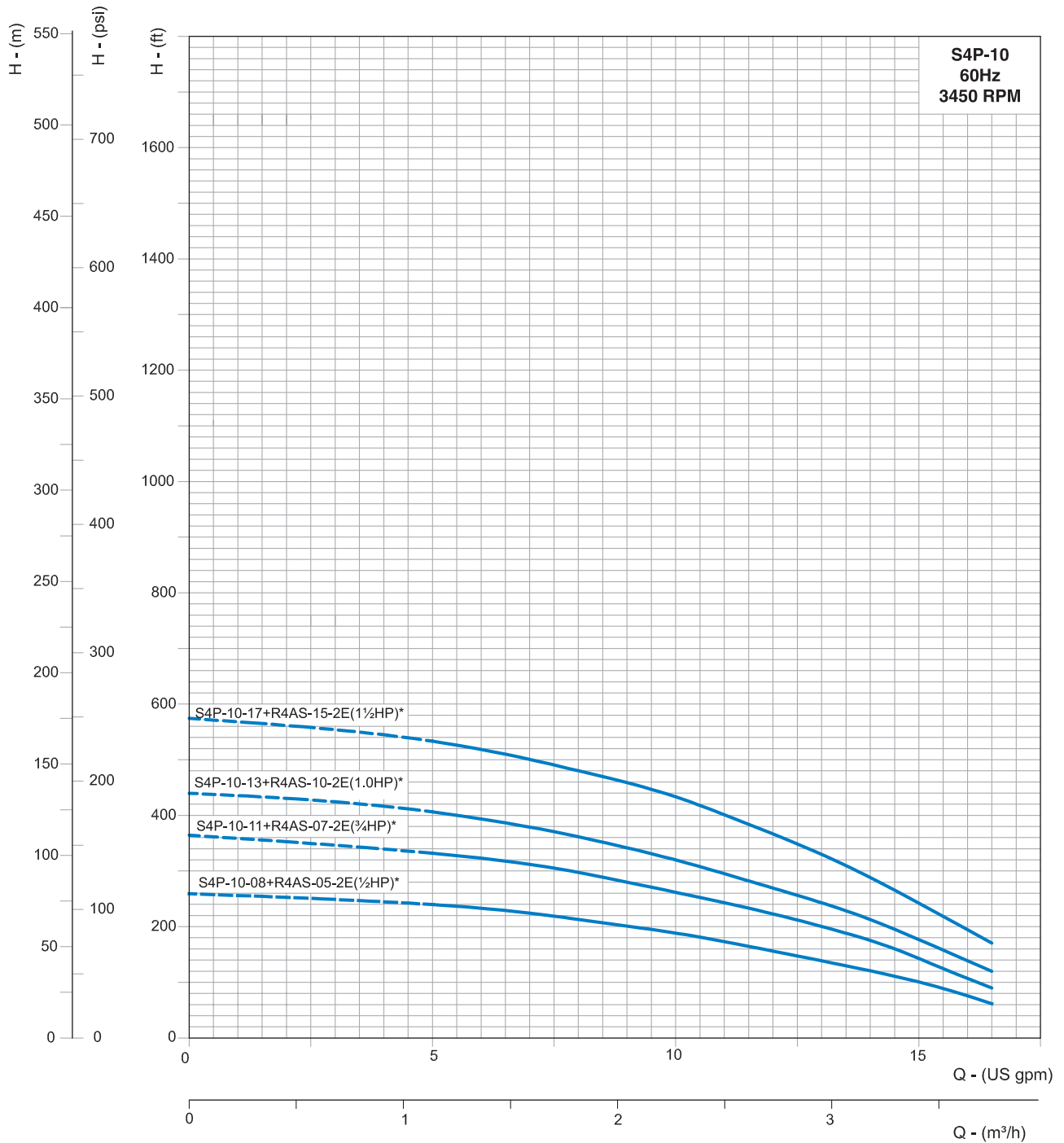
Nominal Diameter : **4"**

Nominal Flow : **10 gpm**

Outlet Size : **1 1/4" NPT**

Performance Curves

Flow Range : 5 - 16.5 gpm



* Marked models are also available in Type-V construction.
Curve tolerance according to ISO : 9906, Grade - 3B.

In view of continuous developments, the information / descriptions / specifications / illustrations are subject to change without notice.

SILVER LINE SERIES

Nominal Diameter : **4"**Nominal Flow : **10 gpm**Outlet Size : **1¼" NPT**

Product code & connection type - 2 Wire Motor

PRODUCT CODE	PMA MODEL	HP	ST	Volt	Connection Type (Capacitor inbuilt with motor)
65233	S4P-10-08+R4AS-05-2E	½	8	230	PSC
65234	S4P-10-11+R4AS-07-2E	¾	11	230	PSC
65235	S4P-10-13+R4AS-10-2E	1	13	230	PSC
65236	S4P-10-17+R4AS-15-2E	1½	17	230	PSC

Product code & connection type - 3 Wire Motor

PRODUCT CODE	PMA MODEL	HP	ST	Volt	Connection Type
65252	S4P-10-08+R4AS-05-1E	½	8	230	CSIR
65253	S4P-10-11+R4AS-07-1E	¾	11	230	CSIR
65254	S4P-10-13+R4AS-10-1E	1	13	230	CSIR
65255	S4P-10-17+R4AS-15-3E	1½	17	230	CSCR

Dimension & Weight details - 2 Wire Motor

PMA MODEL	DISCHARGE (NPT)	PUMP STAGE	HP	PHASE	VOLT	ØD (in)	PUMP END HEIGHT (in)	ASSEMBLED PUMP HEIGHT (in)	PUMP END WEIGHT (lbs)	ASSEMBLED PUMP WEIGHT (lbs)	CABLE SIZE (AWG)	CABLE LENGTH (ft)
P- Series												
S4P-10-08+R4AS-05-2E	1¼"	8	½	1	230	3.9	15.08	28.74	14.99	36.19	14	4.9
S4P-10-11+R4AS-07-2E	1¼"	11	¾	1	230	3.9	17.72	32.36	18.96	42.73	14	4.9
S4P-10-13+R4AS-10-2E	1¼"	13	1	1	230	3.9	19.49	35.12	28.00	54.17	14	4.9
S4P-10-17+R4AS-15-2E	1¼"	17	1½	1	230	3.9	23.03	39.65	4.41	33.38	14	4.9
V-Series												
S4V-10-08+R4AS-05-2E	1¼"	8	½	1	230	3.9	16.10	29.76	9.92	31.09	14	4.9
S4V-10-11+R4AS-07-2E	1¼"	11	¾	1	230	3.9	18.74	33.39	19.84	43.61	14	4.9
S4V-10-13+R4AS-10-2E	1¼"	13	1	1	230	3.9	20.51	36.14	4.19	30.36	14	4.9
S4V-10-17+R4AS-15-2E	1¼"	17	1½	1	230	3.9	24.02	40.63	5.07	34.04	14	4.9

Dimension & Weight details - 3 Wire Motor

PMA MODEL	DISCHARGE (NPT)	PUMP STAGE	HP	PHASE	VOLT	ØD (in)	PUMP END HEIGHT (in)	ASSEMBLED PUMP HEIGHT (in)	PUMP END WEIGHT (lbs)	ASSEMBLED PUMP WEIGHT (lbs)	CONTROL BOX		CABLE SIZE (AWG)	CABLE LENGTH (ft)
											CODE	WEIGHT (lbs)		
P- Series														
S4P-10-08+R4AS-05-1R	1¼"	8	½	1	115	3.9	15.8	25.53	14.99	35.54	145482	3.04	14	4.9
S4P-10-08+R4AS-05-1E	1¼"	8	½	1	230	3.9	15.08	25.53	14.99	35.54	160851	3.08	14	4.9
S4P-10-11+R4AS-07-1E	1¼"	11	¾	1	230	3.9	17.72	29.15	18.96	40.93	160852	3.3	14	4.9
S4P-10-13+R4AS-10-1E	1¼"	13	1	1	230	3.9	19.49	31.91	28.00	53.75	160853	3.55	14	4.9
S4P-10-17+R4AS-10-3E	1¼"	17	1½	1	230	3.9	23.03	36.04	4.41	31.79	160854	6.4	14	4.9
V-Series														
S4V-10-08+R4AS-05-1R	1¼"	8	½	1	115	3.9	16.10	26.56	9.92	30.47	156482	3.04	14	4.9
S4V-10-08+R4AS-05-1E	1¼"	8	½	1	230	3.9	16.10	26.56	9.92	30.47	160851	3.08	14	4.9
S4V-10-11+R4AS-07-1E	1¼"	11	¾	1	230	3.9	18.74	30.18	19.84	42.81	160852	3.3	14	4.9
S4V-10-13+R4AS-10-1E	1¼"	13	1	1	230	3.9	20.51	32.93	4.19	29.94	160853	3.55	14	4.9
S4V-10-17+R4AS-10-3E	1¼"	17	1½	1	230	3.9	24.02	37.03	5.07	32.45	160854	6.4	14	4.9



SILVER LINE SERIES

Nominal Diameter : **4"**

Nominal Flow : **15 gpm**

Outlet Size : **1 1/4" NPT**

Performance Table

PMA MODEL	HP	PSI	Depth to Pump Water Level or Lift in Feet																														
			0	20	40	60	80	100	120	140	160	180	200	220	240	260	280	300	320	340	360	380	400	450	500	550	600	650	700	750	800		
S4P-15-06 + R4AS-05-1E	1/2	0			22.8	21.2	19.6	18	16	14	11.2	6																					
		20	22.4	20.4	18.2	17.6	15.6	13.2	10	4																							
		30	20.4	18.8	17.2	15.2	12.6	9.2	2.8																								
		40	18.4	16.8	14.8	12	8	2																									
S4P-15-06 + R4AS-05-2E	1/2	50	16.8	14.8	11.6	7.6																											
		60	18.8	11.2	6.8																												
		70	10.4	5.6																													
		80	4.8																														
Shut off - PSI		84.8	76.1	67.4	58.7	50	41.3	32.6	23.9	15.2	6.52																						

Shut-off 197 ft

PMA MODEL	HP	PSI	Depth to Pump Water Level or Lift in Feet																														
			0	20	40	60	80	100	120	140	160	180	200	220	240	260	280	300	320	340	360	380	400	450	500	550	600	650	700	750	800		
S4P-15-08 + R4AS-07-1E	3/4	0				21.4	20.4	19.2	18	16.8	15.2	13.6	11.2	7.2	2.4																		
		20	23.3	22.2	21	20.2	19	18.2	16.4	14.6	12.8	10.4	6																				
		30	22	21	20	18.8	17.6	16	14.4	12.6	10	5																					
		40	20.8	19.6	18.8	17.2	15.8	14	12.4	9.2	4																						
S4P-15-08 + R4AS-07-2E	3/4	50	19.6	18.4	17.2	15.6	13.8	12	8.8																								
		60	18	16.8	15.4	13.6	11.4	8.4																									
		70	16.8	15.2	13.6	10.8	7.2																										
		80	15	13.2	10.8	6.8																											
Shut off - PSI		117	109	100	91.3	82.6	73.9	65.2	56.5	47.8	39.1	30.4	21.7	13	4.35																		

Shut-off 270 ft

PMA MODEL	HP	PSI	Depth to Pump Water Level or Lift in Feet																														
			0	20	40	60	80	100	120	140	160	180	200	220	240	260	280	300	320	340	360	380	400	450	500	550	600	650	700	750	800		
S4P-15-10 + R4AS-10-1E	1	0				22.4	21.6	20.8	19.8	18.8	17.8	16.8	15.6	14.4	12.8	9.2	8	4.4															
		20	23.6	22.8	22	21.2	20.4	19.6	18.4	17.4	16.4	15.2	14	12.4	9.6	6.4	3.6																
		30	22.8	22.4	21.2	20.2	15.4	14.4	17.2	16.4	15.2	13.6	12	9.6	6.4	2.4																	
		40	22	21	20.2	19.2	18.4	17.2	16.2	15	13.4	11.8	8.8	5.6																			
S4P-15-10 + R4AS-10-2E	1	50	21	20	19	18	17	16	14.8	13.2	11.2	8.4	5.6																				
		60	20	19	17.8	16.8	15.8	14.8	13	10.8	8	4.8																					
		70	18.8	17.6	16.8	15.6	14.4	12.8	9.2	7.6	4.4																						
		80	17.6	16.6	15.4	14	12.4	10	7.6	4																							
Shut off - PSI		150	141	133	124	115	107	97.8	89.1	80.4	71.7	63	54.3	45.7	37	28.3	19.6	10.9															

Shut-off 345 ft

PUMP MODEL	HP	PSI	Depth to Pump Water Level or Lift in Feet																														
			0	20	40	60	80	100	120	140	160	180	200	220	240	260	280	300	320	340	360	380	400	450	500	550	600	650	700	750	800		
S4P-15-12 + R4AS-15-2E	1 1/2	0				23	22.4	21.6	21	20.4	19.6	18.8	18	17	16	15	14	12.6	10.4	8.4	5.6												
		20		23.2	22.8	22	21.4	20.8	20	19.2	18.4	17.6	16.8	15.8	14.6	13.6	12	10	7.6	5.6													
		30	23.2	22.6	22	21.4	20.8	20	19.2	18.4	17.6	16.6	15.6	14.4	13.4	11.8	9.6	7.2															
		40	22.6	22	20.2	19.2	19.8	19	18.2	17.6	16.4	15.6	14.4	13	11.6	9.2	6.8																
S4P-15-12 + R4AS-15-3E	1 1/2	50	21.8	21.2	20.4	19.8	19	18.2	17.6	16.4	15.6	14.2	14.8	11.2	8.8	6																	
		60	21	20.4	19.8	18.8	18	17.2	16	15.2	14	12.8	11.2	8.4	6																		
		70	20.4	19.6	18.8	18	17	16	15.2	14	12.4	10.4	8	5.6																			
		80	19.6	18.8	17.8	16.8	16	14.8	14	12.2	9.4	7.6	5.2																				
Shut off - PSI		180	172	163	154	146	137	128	120	111	102	93.5	84.8	76.1	67.4	58.7	50	41.3	32.6	23.9	15.2												

Shut-off 415 ft

SILVER LINE SERIES

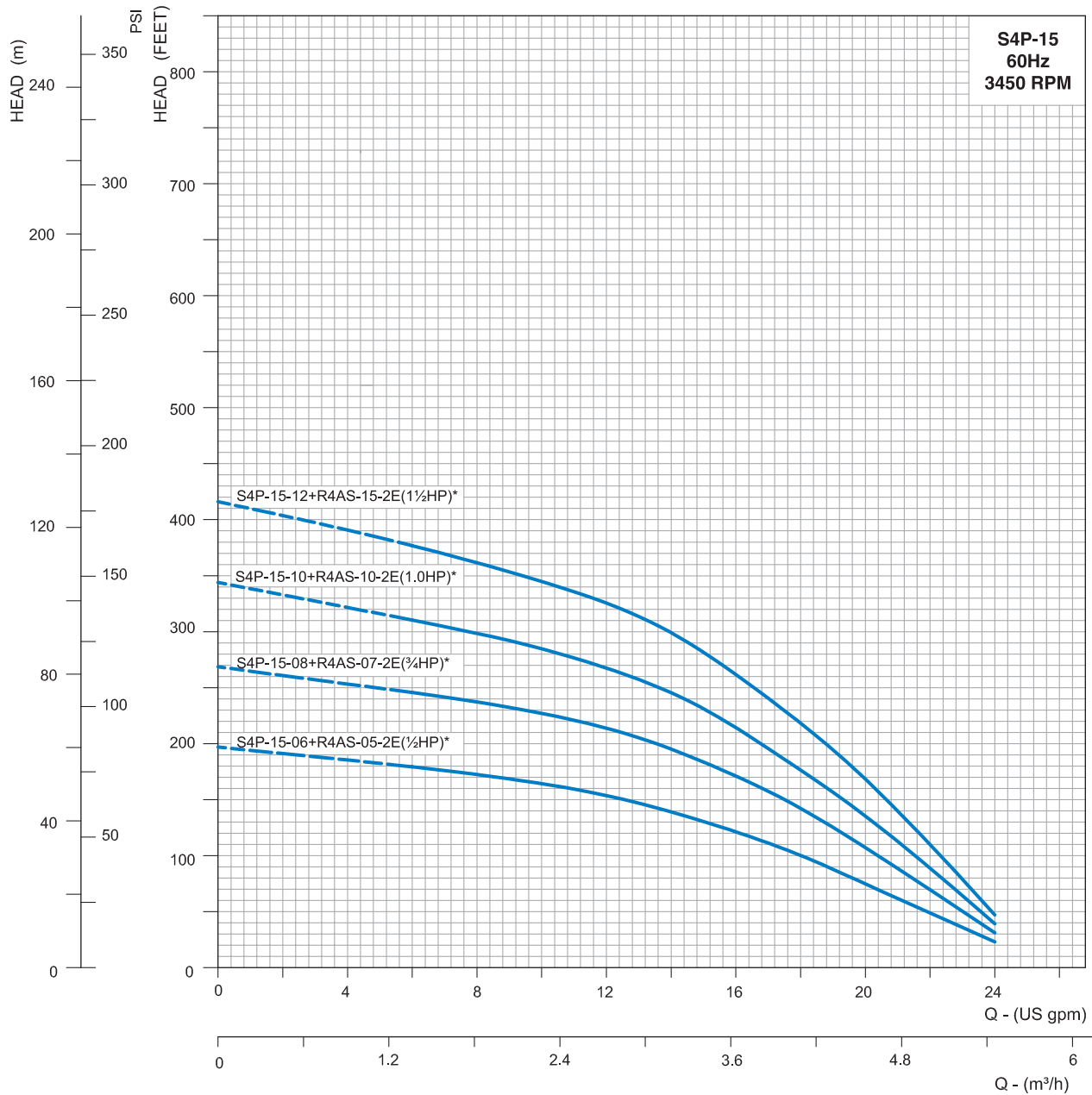
Nominal Diameter : **4"**

Nominal Flow : **15 gpm**

Outlet Size : **1 1/4" NPT**

Performance Curves

Flow Range : 6 - 24 gpm



* Marked models are also available in Type-V construction.
Curve tolerance according to ISO : 9906, Grade - 3B.

In view of continuous developments, the information / descriptions / specifications / illustrations are subject to change without notice.



SILVER LINE SERIES

Nominal Diameter : **4"**

Nominal Flow : **15 gpm**

Outlet Size : **1 1/4" NPT**

Product code & connection type - 2 Wire Motor

PRODUCT CODE	PMA MODEL	HP	ST	Volt	Connection Type (Capacitor inbuilt with motor)
65237	S4P-15-06+R4AS-05-2E	1/2	6	230	PSC
65238	S4P-15-08+R4AS-07-2E	3/4	8	230	PSC
65239	S4P-15-10+R4AS-10-2E	1	10	230	PSC
65240	S4P-15-12+R4AS-15-2E	1 1/2	12	230	PSC

Product code & connection type - 3 Wire Motor

PRODUCT CODE	PMA MODEL	HP	ST	Volt	Connection Type
65256	S4P-15-06+R4AS-05-1E	1/2	6	230	CSIR
65257	S4P-15-08+R4AS-07-1E	3/4	8	230	CSIR
65258	S4P-15-10+R4AS-10-1E	1	10	230	CSIR
65259	S4P-15-12+R4AS-15-3E	1 1/2	12	230	CSCR

Dimension & Weight details - 2 Wire Motor

PMA MODDL	DISCHAGE (NPT)	PUMP STAGE	HP	PHASE	VOLT	ØD (in)	PUMP END HEIGHT (in)	ASSEMBLY PUMP HEIGHT (in)	PUMP END WEIGHT (lbs)	ASSEMBLED PUMP WEIGHT (lbs)	CABLE SIZE (AWG)	CABLE LENGTH (ft)
P-Series												
S4P-15-06+R4AS-05-2E	1 1/4"	6	1/2	1	230	3.9	14.06	27.72	6.39	27.56	14	4.9
S4P-15-08+R4AS-07-2E	1 1/4"	8	3/4	1	230	3.9	16.06	30.71	7.05	30.82	14	4.9
S4P-15-10+R4AS-10-2E	1 1/4"	10	1	1	230	3.9	18.11	33.74	7.94	34.11	14	4.9
S4P-15-12+R4AS-15-2E	1 1/4"	12	1 1/2	1	230	3.9	20.16	36.77	8.60	37.57	14	4.9
V-Series												
S4V-15-06+R4AS-05-2E	1 1/4"	6	1/2	1	230	3.9	15.75	29.41	5.95	27.12	14	4.9
S4V-15-08+R4AS-07-2E	1 1/4"	8	3/4	1	230	3.9	18.03	32.68	16.76	40.52	14	4.9
S4V-15-10+R4AS-10-2E	1 1/4"	10	1	1	230	3.9	20.24	35.87	18.74	44.91	14	4.9
S4V-15-12+R4AS-15-2E	1 1/4"	12	1 1/2	1	230	3.9	22.52	39.13	6.17	35.14	14	4.9

Dimension & Weight details - 3 Wire Motor

PMA MODEL	DISCHARGE (NPT)	PUMP STAGE	HP	PHASE	VOLT	ØD (in)	PUMP END HEIGHT (in)	ASSEMBLED PUMP HEIGHT (in)	PUMP END WEIGHT (lbs)	ASSEMBLED PUMP WEIGHT (lbs)	CONTROL BOX		CABLE SIZE (AWG)	CABLE LENGTH (ft)
											CODE	WEIGHT (lbs)		
P-Series														
S4P-15-06+R4AS-05-1R	1 1/4"	6	1/2	1	115	3.9	14.06	24.51	6.39	26.94	156482	3.04	14	4.9
S4P-15-06+R4AS-05-1E	1 1/4"	6	1/2	1	230	3.9	14.06	24.51	6.39	26.94	160851	3.08	14	4.9
S4P-15-08+R4AS-07-1E	1 1/4"	8	3/4	1	230	3.9	16.06	27.50	7.05	30.03	160852	3.3	14	4.9
S4P-15-10+R4AS-10-1E	1 1/4"	10	1	1	230	3.9	18.11	30.53	7.94	33.69	160853	3.55	14	4.9
S4P-15-12+R4AS-15-1E	1 1/4"	12	1 1/2	1	230	3.9	20.16	33.17	8.60	35.98	160854	6.4	14	4.9
V-Series														
S4V-15-06+R4AS-05-1R	1 1/4"	6	1/2	1	115	3.9	15.75	26.20	5.95	26.50	156482	3.04	14	4.9
S4V-15-06+R4AS-05-1E	1 1/4"	6	1/2	1	230	3.9	15.75	26.20	5.95	26.50	160851	3.08	14	4.9
S4V-15-08+R4AS-07-1E	1 1/4"	8	3/4	1	230	3.9	18.03	29.47	16.76	39.73	160852	3.3	14	4.9
S4V-15-10+R4AS-10-1E	1 1/4"	10	1	1	230	3.9	20.24	32.66	18.74	44.49	160853	3.55	14	4.9
S4V-15-12+R4AS-15-3E	1 1/4"	12	1 1/2	1	230	3.9	22.52	35.53	6.17	33.55	160854	6.4	14	4.9

SILVER LINE SERIES

Nominal Diameter : **4"**

Nominal Flow : **20 gpm**

Outlet Size : **1 1/4" NPT**

Performance Table

PMA MODEL	HP	PSI	Depth to Pump Water Level or Lift in Feet																												
			0	20	40	60	80	100	120	140	160	180	200	220	240	260	280	300	320	340	360	380	400	420	440	460	480	500	520	540	560
S4P-20-06 + R4AS-07-1E	3/4	0				29	27	25.5	23.5	21	18	15	8																		
		20		28	27	25	23	21	17	13	5																				
		30	28	26.5	25	22	20	17	12																						
		40	26	24	22	20	17	12																							
S4P-20-06 + R4AS-07-2E	3/4	50	25	22	19	17	12																								
		60	22	19	15	9																									
		70	18	14.5	8																										
		80	13.5	5																											
Shut off - PSI		91.3	82.6	73.9	65.2	56.5	47.8	39.1	30.4	21.7	13	4.35																			

Shut-off 210 ft

PMA MODEL	HP	PSI	Depth to Pump Water Level or Lift in Feet																												
			0	20	40	60	80	100	120	140	160	180	200	220	240	260	280	300	320	340	360	380	400	420	440	460	480	500	520	540	560
S4P-20-07 + R4AS-10-1E	1	0				29.5	28	26.5	24.5	22	20.5	17.5	14	7																	
		20			29	27	25.5	23	21.5	19	16.5	13																			
		30		29	27	25	23	21	18.5	16	12																				
		40	29	27	25.5	23.5	21	19	16	12																					
S4P-20-07 + R4AS-10-2E	1	50	27	25	23	21	18.5	16	12																						
		60	25	23	20.5	17.5	15	7																							
		70	22	20	17.5	14	6																								
		80	19.5	17	14																										
Shut off - PSI		108	100	91.3	82.6	73.9	65.2	56.5	47.8	39.1	30.4	21.7	13	4.35																	

Shut-off 249 ft

PMA MODEL	HP	PSI	Depth to Pump Water Level or Lift in Feet																											
			0	20	40	60	80	100	120	140	160	180	200	220	240	260	280	300	320	340	360	380	400	420	440	460	480	500	520	540
S4P-20-10 + R4AS-15-1E	1 1/2	0					30	29	27.5	26	25	23	21.5	20	18.5	17	15	12	7											
		20			29.5	28.5	27	25.5	24	22.5	21	19.5	18	16	14	11														
		30		29.5	28	27	25.5	24	22.5	21	19.5	18	16	14	10															
		40	29.5	28	27	25.5	24	22.5	21	19	18	16	14	10																
S4P-20-10 + R4AS-15-2E	1 1/2	50	29.5	28	27	25.5	24	22.5	21	19.5	18	16	14	10																
		60	29	27	25	23.5	22	21	19	17	15.5	13	9																	
		70	26	24.5	23	22	20	18.5	17	15	13	6																		
		80	24.5	23	21.5	20	18.5	17	15	12	5																			
Shut off - PSI		152	143	135	126	117	109	100	91.3	82.6	73.9	65.2	56.5	47.8	39.1	30.4	21.7	13	4.35											

Shut-off 351 ft



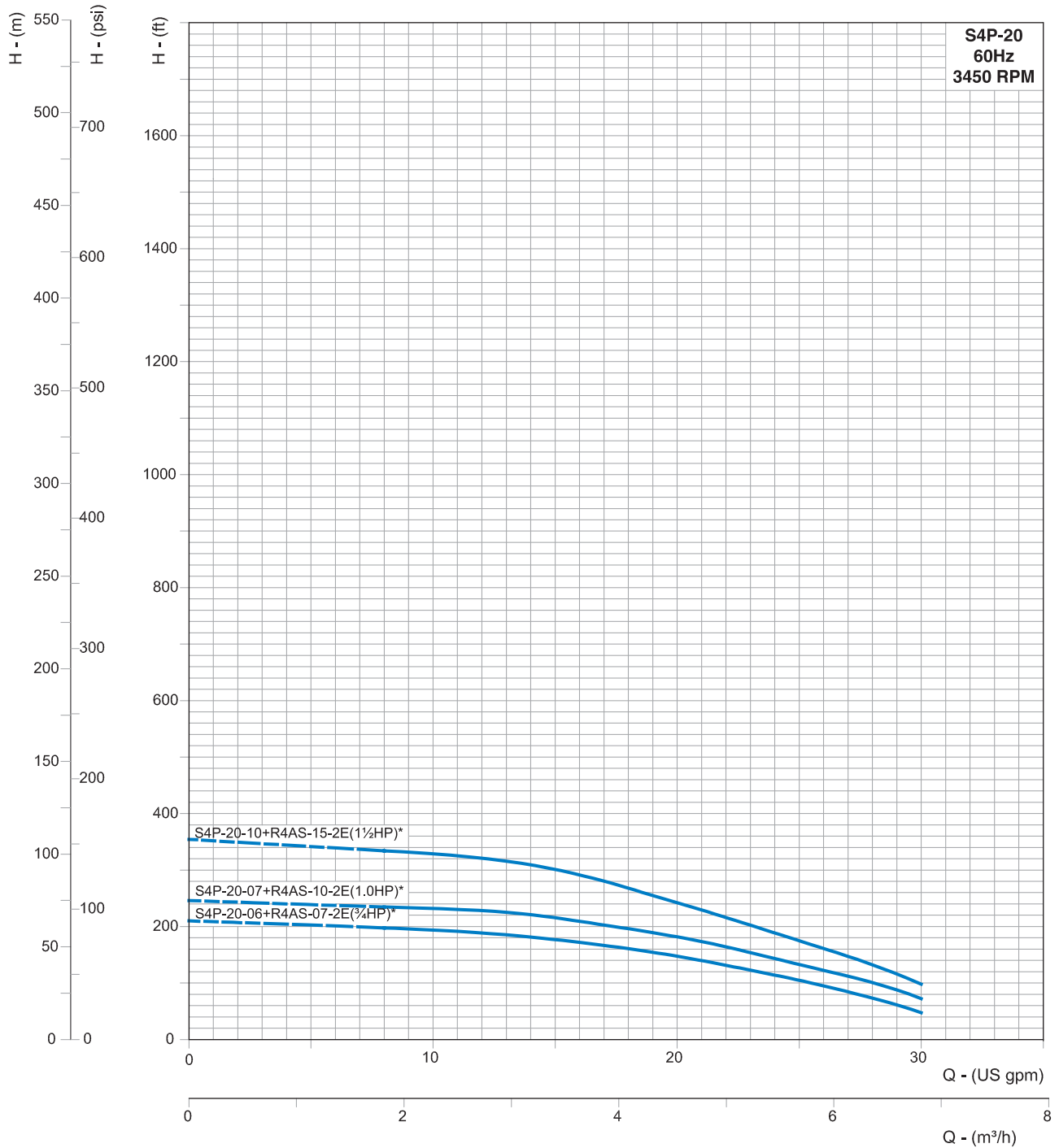
SILVER LINE SERIES

Nominal Diameter : **4"**

Nominal Flow : **20 gpm**

Outlet Size : **1 1/4" NPT**

Performance Curves



* Marked models are also available in Type-V construction.
Curve tolerance according to ISO : 9906, Grade - 3B.

In view of continuous developments, the information / descriptions / specifications / illustrations are subject to change without notice.

SILVER LINE SERIES

Nominal Diameter : **4"**Nominal Flow : **20 gpm**Outlet Size : **1¼" NPT**

Product code & connection type - 2 Wire Motor

PRODUCT CODE	PMA MODEL	HP	ST	Volt	Connection Type (Capacitor inbuilt with motor)
65241	S4P-20-06+R4AS-07-2E	¾	6	230	PSC
65242	S4P-20-07+R4AS-10-2E	1	7	230	PSC
65243	S4P-20-10+R4AS-15-2E	1½	10	230	PSC

Product code & connection type - 3 Wire Motor

PRODUCT CODE	PMA MODEL	HP	ST	Volt	Connection Type
65260	S4P-20-06+R4AS-07-1E	¾	6	230	CSIR
65261	S4P-20-07+R4AS-10-1E	1	7	230	CSIR
65262	S4P-20-10+R4AS-15-3E	1½	10	230	CSCR

Dimension & Weight details - 2 Wire Motor

PMA MODEL	DISCHARGE (NPT)	PUMP STAGE	HP	PHASE	VOLT	ØD (in)	PUMP END HEIGHT (in)	ASSEMBLED PUMP HEIGHT (in)	PUMP END WEIGHT (lbs)	ASSEMBLED PUMP WEIGHT (lbs)	CABLE SIZE (AWG)	CABLE LENGTH (ft)
P-Series												
S4P-20-06+R4AS-07-2E	1¼"	6	¾	1	230	3.9	14.80	29.45	4.41	28.18	14	4.9
S4P-20-07+R4AS-10-2E	1¼"	7	1	1	230	3.9	15.98	31.61	5.07	31.24	14	4.9
S4P-20-10+R4AS-15-2E	1¼"	10	1½	1	230	3.9	19.29	35.91	5.73	34.70	14	4.9
V-Series												
S4V-20-06+R4AS-07-2E	1¼"	6	¾	1	230	3.9	15.75	30.39	7.72	31.48	14	4.9
S4V-20-07+R4AS-10-2E	1¼"	7	1	1	230	3.9	16.89	32.52	8.82	34.99	14	4.9
S4V-20-10+R4AS-15-2E	1¼"	10	1½	1	230	3.9	20.24	36.85	6.61	35.58	14	4.9

Dimension & Weight details - 3 Wire Motor

PMA MODEL	DISCHARGE (NPT)	PUMP STAGE	HP	PHASE	VOLT	ØD (in)	PUMP END HEIGHT (in)	ASSEMBLED PUMP HEIGHT (in)	PUMP END WEIGHT (lbs)	ASSEMBLED PUMP WEIGHT (lbs)	CONTROL BOX		CABLE SIZE (AWG)	CABLE LENGTH (ft)
											CODE	WEIGHT (lbs)		
P-Series														
S4P-20-06+R4AS-07-1E	1¼"	6	0.75	1	230	3.9	14.80	26.24	4.41	29.38	160852	3.3	14	4.9
S4P-20-07+R4AS-10-1E	1¼"	7	1	1	230	3.9	15.98	28.41	5.07	30.82	160853	3.55	14	4.9
S4P-20-10+R4AS-15-3E	1¼"	10	1.5	1	230	3.9	19.29	32.30	5.73	33.11	160854	6.4	14	4.9
V-Series														
S4V-20-06+R4AS-07-1E	1¼"	6	0.75	1	230	3.9	15.75	27.19	7.72	30.69	160852	3.3	14	4.9
S4V-20-07+R4AS-10-1E	1¼"	7	1	1	230	3.9	16.89	29.31	8.82	34.57	160853	3.55	14	4.9
S4V-20-10+R4AS-15-3E	1¼"	10	1.5	1	230	3.9	20.24	33.25	6.61	34.00	160854	6.4	14	4.9

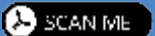
NOTES

A series of horizontal dotted lines for writing notes, starting from the top of the 'NOTES' header and extending down the page.

W I N N I N G W A Y S

When you have a good thing going it is quite in the fitting of things that recognitions come our way. Several prestigious awards, which decorate our shelf, say it all. These rewards not only acknowledge our position as a leader in the water pump industry but also serve as reminders about what the customer expects from a winner. And we, as ever, have our ears perfectly tuned to customer expectations.





C.R.I. FLUID SYSTEMS USA LLC,

620 N Fairfield St, Amarillo, Texas 79107. USA.

Tel : 832-430-4660 E-mail : sales.us@crifluidsystems.com Website: www.crifluidsystems.com

Overseas subsidiaries : India, Brazil, Bangladesh, China, Italy, Indonesia, Philippines, South Africa, Spain, Turkey, UAE